

Paper weight-110# (minimum)

Black nonfading ink required

U.S. PUBLIC LAND SURVEY MONUMENT RECORD

For Public Land Survey Corners In:

WI ADMINISTRATIVE CODE A-E 7.08 REQUIREMENT

T. 2 N. R. 13 E. 4th P.M.

REV 10/23/2004

USMONREC.DWG

CORNER CODE INDEX

LA PRAIRIE TWP

ROCK COUNTY WI

IF AVAILABLE

ROCK COUNTY COORDINATES PREFERRED

North _____ Elev. _____

East _____

Hor. Datum _____ Vert. Datum _____

LATITUDE _____ ELLIPS. HT. _____

LONGITUDE _____

NAD83(91) _____ NETWORK ADJ. YR _____

GPS (X) _____ TRAVERSE (X) _____

BASED ON THE FOLLOWING CONTROL:

	1	2	3	4	5	6	7	8	9	10	11	12	13	14	15	16	17	18	19	20	21	22	23	24	25		
A																											A
B																											B
C																											C
D																											D
E																											E
F																											F
G																											G
H																											H
J																											J
K																											K
L																											L
M																											M
N																											N
O																											O
P																											P
Q																											Q
R																											R
S																											S
T																											T
U																											U
V																											V
W																											W
X																											X
Y																											Y
Z																											Z

PLACE MONUMENT SYMBOL AT PROPER LOCATION ON ABOVE INDEX

CORNER MONUMENT

WITNESS MONUMENT

(a)

BEARINGS ARE BASED ON: _____

FIELD BOOK _____ PAGE # _____

SHEET 1 OF 4

SHOW A PLAN VIEW DRAWING DEPICTING THE CORNER MONUMENT AND SURROUNDING PHYSICAL FEATURES, INCLUDING THE EXCAVATION AREA AND DEPTH.

PLANNING & ZONING COMMITTEE ADOPTED THIS FORM ON 12/2/1982

CORNER CODE A-11(1)

LA506

(B) Describe any record evidence, monument evidence, occupational evidence, testimonial evidence or any other material evidence you considered, and whether the monument was found or placed.

- 1870 RUGER VOL 6 PG 315 2648.58 TO NW COR SEC 4 & 2645.61 TO NE COR SEC 4.
- 1870 OCT 13 RUGER REMONUMENTATION OF LA PRAIRIE TWP WEST ON NORTH LINE OF NE 1/4 OF SEC 4 ON A VAR 5-23 OFFSET SOUTH 13.86' AT 2645.61 INTERSECTED 1/4 LINE 17.98' SOUTH OF 1/4 COR FOUND OLD STAKE AT INTERSECTION OF SOD FENCES. COR VAR 5-20. WEST ON NORTH LINE OF NW 1/4 OF SEC 4 ON A VAR 5-25 AT 2648.58 INTERSECTED WEST BOUNDARY LINE AT COR. FOUND STAKE SET BY SELF-SURROUNDED BY LIMESTONES AT COR. (PLACED CUT LIMESTONE)
- 1870 OCT 18 RUGER REMONUMENTATION OF HARMONY TWP WEST ON SOUTH LINE OF SE QUARTER OF SEC 33 ON A VAR 5-25, OFFSET SOUTH 13.86' AT 2645.61 INTERSECT QUARTER LINE 17.99' SOUTH OF QUARTER COR. FOUND OLD STAKE AT INTERSECTION OF SOD FENCE. COR VAR 5-20 WEST ON SOUTH LINE OF SW 1/4 OF SEC 33 ON A VAR 5-25 AT 2648.58 INTERSECTED WEST BOUNDARY LINE AT COR. FOUND STAKE SET BY SELF. SURROUNDED BY LIMESTONES AT COR. (PLACED CUT LIMESTONE)
- 1877 RUGER VOL 2 PG 228 STONE MON. USED TO SUBDIVIDE SEC 33.
- 1901 KERCH VOL 3 PG 5 2648.8 TO NW COR SEC 4 & 2633.8 TO CENTER OF SEC 33. CALLS FOR STONE MON.
- 1935 SUNNY VOL 3 PG 273 SET 1"X30" LONG PIPE THRU CONC. PVMT. 0.8' SOUTH OF CENTER OF PVMT IN LINE WITH FENCE NORTH. 30' SOUTH OF N FENCE. 2648.8 TO SW COR SEC 33.
- 1964 BATTERMAN VOL 4 PG 106 FD PIPE SET BY SUNNY & REFERENCED SAME.
- 1978 BARNES VOL 5 PG 518 COORDINATES FROM MARK HURD-CITY OF JANESVILLE MAPPING PROJECT. 246,269.455; 2,278,841.006'
- 1981 TRUE (WPL) ATTACHED IS A SHEET SHOWING NEW TIES TO THE IRON PIPE MARKING THE SOUTH 1/4 CORNER OF SEC 34, T3,N, R13E. WE DUG THRU THE BLACKTOP TO EXPOSE THE PIPE AND THEN RECOVERED IT. SHOWS 0.8' SOUTH OF CENTER OF PVMT.
- 1981 TRUE 6-184 INFORMATION PROVIDED BY NORMAN TRUE S-1024 AUG 6 1981. FD IRON PIPE BELOW PVMT. REFERENCE SAME. FD NW, SW, & SE REFERENCE PIPES (VOL 4 PG 106)
- 1981 TRUE CSM VOL 10-469 FD PIPE @ N 1/4 COR SEC 4 & PIPE @ NE COR SEC 4. USED FOR LINE OF SURVEY IN NE 1/4 OF SEC 4
- 1982 COMBS CSM VOL 11 PG 31 FD ALUM. @ S 1/4 COR & SW COR SEC 33. USED FOR LINE OF LOT NEAR SW COR SEC 33.
- 1984 BARNES 6-315 S88-45-58E 2647.55 TO NE COR SEC 4, N88-37-35W 2648.80 TO NW COR SEC 4, & NO-07-31W 5276.26 TO N 1/4 COR SEC 33.
- 1984 BARNES Z-11(2) FD 1" IRON PIPE AND CUT LIMESTONE. DROVE PIPE DEEP. SET POLY MON. ON TOP OF STONE. THE PIPE WAS 0.43' NORTH AND 0.32' EAST OF THE STONE. REFERENCED SAME. ELEV 855.3 246,268.76; 2,278,839.27 FIELD BOOK 2 PG 30 & 47
- 1984 BARNES Z-9 N88-37-35W 2648.80 TO NW COR SEC 4, KERCH 2648.80, SUNNY 2648.80. NO-03-54W 2629.00 FROM NW COR SEC 4 TO W 1/4 COR SEC 33 HARMONY TWP

Donald Barnes

JUNE 5, 2008

LA506 N1/4CORSEC4

- 1985 BARNES HARMONY REMONUMENTATION PROJECT. FD CUT STONE WITH POLY ON TOP. S88-45-58E 2647.55 TO SE COR SEC 33 & N88-38-20W 2648.72 TO SW COR SEC 33.
- 1986 BARNES LA PRAIRIE TWP REMONUMENTATION PROJECT. FD CUT STONE WITH POLY ON TOP. S88-28-32E 2647.55 TO SE COR SEC 33 & N88-20-09W 2648.80 TO SW COR SEC 33.
- 1989 COMBS MAP #12182 USED CORNER.
- 1990 COMBS MAP #11927 USED CORNER
- 1990 COMBS MAP #11926 USED CORNER
- 1990 COMBS CSM VOL 14 PG 304 FD ALUM. MON. @ S 1/4 COR SEC 33 & SW COR SEC 33. 2648.64 TO SW COR SEC 33. LOT ON WEST SIDE OF WUTHERING HILLS DR & NORTH SIDE OF STH 11.
- 1994 COMBS CSM VOL 18 PG 19 FD ALUM. MON @ S 1/4 COR & SW CORNERS OF SEC 33. LOT ON WEST SIDE OF WUTHERING HILLS & NORTH SIDE OF STH 11.
- 1995 LATHROP CSM VOL 18 PG 491 FD ALUM. @ S 1/4 COR & SW CORNERS OF SEC 33. N88-38-30W 2648.64 TO SW COR SEC 33. LOT ON WEST SIDE OF WUTHERING HILLS DR. & NORTH SIDE OF STH 11.
- 1995 LATHROP MAP #9358 USED CORNER
- 1996 LATHROP CSM VOL 19 PG 332 FD ALUM. MON. @ N 1/4 COR SEC 4 & NE COR OF SEC 4. LOT ON EAST SIDE OF WUTHERING HILLS DR. & NORTH SIDE OF STH 11.
- 1996 LATHROP CSM VOL 20 PG 50 FD ALUM. MON. @ S 1/4 COR SEC 33 & SE COR SEC 33. S88-45-40E 2647.62 TO SE COR SEC 33. NO-07-05W 1030.3 TO SW COR OF LOT
- 1997 LATHROP CSM VOL 20 PG 264 FD ALUM. MON. S89-28-42E 2647.44 TO NE COR SEC 4 (ALUM), SO-25-23E 141.50 ALONG SEC LINE TO NORTH LINE OF LOT.
- 1998 LATHROP CSM VOL 21 PG 301 FD ALUM. @ S 1/4 COR & SE CORNERS OF SEC 33. S88-45-40E 2647.62 TO SE COR SEC 33. NORTH SIDE OF STH 11 & ABOUT 511.79' EAST OF CORNER.
- 1999 COMBS MAP #7375 FD ALUM @ N 1/4 COR SEC 4. N89-21-09W 2648.8X TO NW COR SEC 4 (SHOWS CROSSED LINE BUT CALLS FOR NOTHING), SO-25-23E FROM N 1/4 COR SEC 4 ALONG N/S 1/4 LINE, FROM NW COR SEC 4 SO-23-06E ALONG SEC LINE.
- 1999 LATHROP CSM VOL 22 PG 415 FD ALUM. @ S 1/4 COR & SE COR OF SEC 33. S88-45-40E 2647.62 TO SE COR SEC 33. FROM S 1/4 COR SEC 33 N1-56-10E 1615.16 TO SE COR OF PROPERTY COR ON EAST R/W LINE.
- 1999 COMBS CSM VOL23-82 FD ALUM. MON. S89-28-42E 2647.44 TO NE COR SEC 4 (ALUM), SO-25-23E 406.03 ALONG SEC LINE TO NORTH LINE OF KLEIN AVE.
- 2000 COMBS CSM VOL 23 PG 449 FD ALUM. MON. @ S 1/4 COR & SE CORNERS OF SEC 33. S88-45-40E 2647.62 TO SE COR SEC 33. LOT ON EAST SIDE OF S. WUTHERING HILLS DR & NORTH SIDE OF STH 11.
- 2000 BARNES A-11 INFORMATION IS FROM WIDOT R/W PLANS PROJ MAP #1704-01-2 STH 11 DATED 9-29-1999 COORDINATES ARE WI COORDINATE SOUTH ZONE, NAD83. I COMPUTED THE SHOWN COUNTY COORDINATES FROM THEIR RECORD COORDINATES. POLY 246,275.76; 2,247,303.41 264,788.80; 509,286.30
- 2000 COMBS MAP #7653 CALLS FOR ALUM. MON. SO-25-23E 141.50 ALONG SEC LINE TO POB; THENCE N89-25-58W 60.0 TO PIN; THENCE SO-25-23E 273.84 TO PIN; THENCE N89-39-55W 170.74 TO PIN.
- 2002 COMBS CSM VOL 25 PG 236 FD ALUM @ S 1/4 & SE CORNERS OF SEC 33. S88-45-40E 2647.45 (REC 2647.62) TO SE COR SEC 33.

Donald Barnes
June 5, 2008

LA506 N1/4CORSEC4

- 2003 LATHROP CSM VOL 26 PG 218 FD ALUM @ S 1/4 & SE CORNERS OF SEC 33. S88-45-40E 2647.62 TO SE COR SEC 33. S88-45-40E 20.01 ALONG SEC LINE; THENCE NO-07-05W 603.03 TO PROPERTY COR.
- 2004 COMBS CSM VOL 27 PG 148 FD ALUM @ S 1/4 & SE CORNERS OF SEC 33. S88-45-40E 2647.62 TO SE COR 33. S88-45-40E 20.01; THENCE NO-07-05W 603.03 TO PROP COR.
- 2005 LATHROP CSM VOL 28 PG 269 FD ALUM. @ S 1/4 & SE CORNERS OF SEC 33. SW COR OF LOT ON EAST R/W LINE OF WUTHERING HILLS DR & N1-56-10E 1615.16 OF S 1/4 COR SEC 33. S88-45-40E 2647.62 TO SE COR SEC 33.
- 2006 COMBS MAP #15346 USED CORNER.
- 2008 BARNES COUNTY ADJUSTMENT FILE "MERG536"
POINT EASTING NORTHING SD EAST SD NRTH T SD MAJ SD IN

625H 506637.641 264848.797 0.0570 0.0510 91 0.0570 .0510
NW COR SEC 4

626H 509286.081 264789.618 0.0598 0.0964 162 0.1001 .0535
N 1/4 COR SEC 4

627H 511933.087 264735.190 0.0749 0.0513 86 0.0750 .0512
NE COR SEC 4 N88-43-12W 2649.10 TO NW COR SEC 4,
S88-49-19E 2647.57 TO NE COR SEC 4, NW 4 TO W 1/4
COR SEC 4 S0-14-51W 2665.20, N 1/4 COR SEC 4 TO S
1/4 COR SEC 4 S0-13-09W 5302.33, N 1/4 COR SEC 4 TO
N 1/4 COR SEC 33 NO-11-38W 5275.67

ANGLE NE 4 TO NW 4 @ N 1/4 COR SEC 4 180-06-08
2.36' SOUTH OF LINE BETWEEN NW & NE CORNERS OF SEC
4

FD POLY. MON. REFERENCED SAME. MON. WILL BE DESTROYED BY ROAD CONSTRUCTION. MON IS 0.1 DEEP, 1.1' SOUTH OF CENTER LINE SEAM OF CONC. PVMT., ON LINE WITH EAST N/S CURB OF ROAD TO THE NORTH, & ON LINE WITH EAST PVMT EDGE OF RD TO THE SOUTH.

C) Was the corner restored through acceptance of (1) an obliterated evidence location, or, (2) a found perpetuated location?

ACCEPTED POLY. MON. WHICH RECORD CALLS FOR AS ON TOP OF CUT LIMESTONE.

D) Describe any material discrepancy between the location of the corner as restored or reestablished and the location of that corner as previously restored or reestablished by distance and direction. Show the discrepancy on the plan view drawing under (a), above. Show the distances between the corner as previously restored or reestablished and (1) the corner as restored or reestablished, and (2) to at least 4 of the witness monuments shown on the drawing in (a), above.

RECORD SHOWS SUNNY PLACED PIPE NEAR CUT STONE. IN 1964 BATTERMAN (VOL 4 PG106) FD PIPE SET BY SUNNY & REFERENCED PIPE. IN 1984 I FOUND THE PIPE & THE CUT LIMESTONE. THE PIPE WAS 0.43 NORTH AND 0.32' EAST OF THE STONE.

I, **Donald Barnes**, hereby certify that the corner location as identified by the corner code index was determined by me under my direction and control and that this U.S. Public Land Survey Monument Record is correct and complete to the best of my knowledge and belief.

Seal
Donald Barnes
Emboss

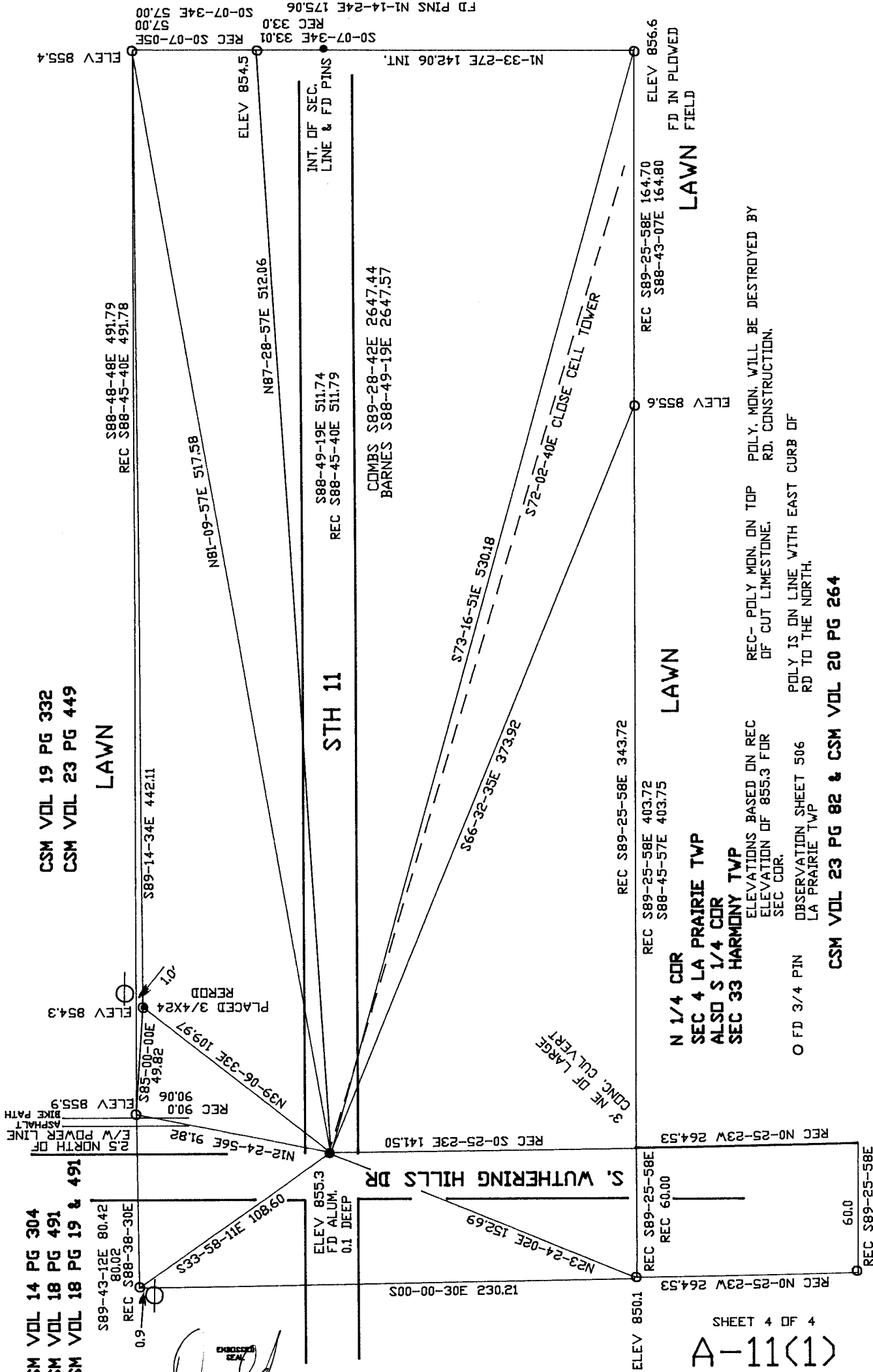
SHEET 3 OF 4

JUNE 5, 2008

CORNER CODE **A-11(1)**
A.E. 7.08 REQUIREMENT

CSM VOL 14 PG 304
 CSM VOL 18 PG 491
 CSM VOL 18 PG 19 & 491

CSM VOL 19 PG 332
 CSM VOL 23 PG 449



David Barnes
 JUN 5, 2008

SHEET 4 OF 4
 A-11(1)

REC- POLY MON. ON TOP OF CUT LIMESTONE.
 POLY IS ON LINE WITH EAST CURB OF RD TO THE NORTH.

ELEVATIONS BASED ON REC ELEVATION OF 855.3 FOR SEC COR.
 OBSERVATION SHEET 506 LA PRAIRIE TWP

O FD 3/4 PIN

CSM VOL 23 PG 82 & CSM VOL 20 PG 264

REC S89-25-58E 164.70
 S88-43-07E 164.80
 ELEV 856.6
 FD IN PLOWED
 LAWN FIELD

REC S89-25-58E 343.72
 S88-45-57E 403.75
 ELEV 859.6
 LAWN

N 1/4 COR
 SEC 4 LA PRAIRIE TWP
 ALSO S 1/4 COR
 SEC 33 HARMONY TWP

COMBS S89-28-42E 2647.44
 BARNES S88-49-19E 2647.57

INT. OF SEC.
 LINE & FD PINS

S88-49-19E 511.74
 REC S88-45-40E 511.79

N87-28-57E 512.06
 ELEV 854.5

N81-09-57E 517.58
 ELEV 855.4

S88-48-48E 491.79
 REC S88-45-40E 491.78

S89-14-34E 442.11
 ELEV 854.3

PLACED 3/4X24
 REROD
 S85-00-00E 49.82
 REC 90.06

N39-06-33E 109.97
 REC 90.0
 ELEV 855.9
 ASPHALT BIKE PATH
 E/S NORTH OF
 R/W POWER LINE

N12-24-56E 91.82
 REC 90.0
 ELEV 855.3
 FD ALUM.
 0.1 DEEP

S. WUTHERING HILLS DR
 REC S0-25-23E 141.50
 REC N0-25-23W 264.53

N23-24-02E 152.69
 REC N0-25-23W 264.53
 ELEV 850.1

REC S89-25-58E 60.0
 REC 60.0
 REC N0-25-23W 264.53
 REC S89-25-58E 60.0

3' NE OF LARGE
 CONC. CULVERT

S72-02-40E CLOSE CELL TOWER
 S73-16-51E 530.18
 S66-32-35E 373.92

S0-07-34E 33.01
 REC 33.0
 S0-07-34E 57.00
 FD PINS N1-14-24E 175.06
 N1-33-27E 142.06 INT.