

Paper weight-110# (minimum) Black nonfading ink required

U.S. PUBLIC LAND SURVEY MONUMENT RECORD

For Public Land Survey Corners In:
T. 2 N. R. 13 E. 4th P.M.
 CORNER CODE INDEX

WI ADMINISTRATIVE CODE A-E 7.08 REQUIREMENT
 REV 10/23/2004 USMONREC.DWG

| | | | | | | | | | | | | | | | | | | | | | | | | | | | |
|---|---|---|---|---|---|---|---|---|---|----|----|----|----|----|----|----|----|----|----|----|----|----|----|----|----|---|---|
| A | 1 | 2 | 3 | 4 | 5 | 6 | 7 | 8 | 9 | 10 | 11 | 12 | 13 | 14 | 15 | 16 | 17 | 18 | 19 | 20 | 21 | 22 | 23 | 24 | 25 | A | |
| B | | | 6 | | | | 5 | | | | | 4 | | | | | 3 | | | | | 2 | | | | 1 | B |
| C | | | | | | | | | | | | | | | | | | | | | | | | | | | C |
| D | | | | | | | | | | | | | | | | | | | | | | | | | | | D |
| E | | | | | | | | | | | | | | | | | | | | | | | | | | | E |
| F | | | | | | | | | | | | | | | | | | | | | | | | | | | F |
| G | | | | | | | | | | | | | | | | | | | | | | | | | | | G |
| H | | | | | | | | | | | | | | | | | | | | | | | | | | | H |
| I | | | | | | | | | | | | | | | | | | | | | | | | | | | I |
| J | | | | | | | | | | | | | | | | | | | | | | | | | | | J |
| K | | | | | | | | | | | | | | | | | | | | | | | | | | | K |
| L | | | | | | | | | | | | | | | | | | | | | | | | | | | L |
| M | | | | | | | | | | | | | | | | | | | | | | | | | | | M |
| N | | | | | | | | | | | | | | | | | | | | | | | | | | | N |
| O | | | | | | | | | | | | | | | | | | | | | | | | | | | O |
| P | | | | | | | | | | | | | | | | | | | | | | | | | | | P |
| Q | | | | | | | | | | | | | | | | | | | | | | | | | | | Q |
| R | | | | | | | | | | | | | | | | | | | | | | | | | | | R |
| S | | | | | | | | | | | | | | | | | | | | | | | | | | | S |
| T | | | | | | | | | | | | | | | | | | | | | | | | | | | T |
| U | | | | | | | | | | | | | | | | | | | | | | | | | | | U |
| V | | | | | | | | | | | | | | | | | | | | | | | | | | | V |
| W | | | | | | | | | | | | | | | | | | | | | | | | | | | W |
| X | | | | | | | | | | | | | | | | | | | | | | | | | | | X |
| Y | | | | | | | | | | | | | | | | | | | | | | | | | | | Y |
| Z | | | | | | | | | | | | | | | | | | | | | | | | | | | Z |

1 2 3 4 5 6 7 8 9 10 11 12 13 14 15 16 17 18 19 20 21 22 23 24 25
 PLACE MONUMENT SYMBOL \blacklozenge AT PROPER LOCATION ON ABOVE INDEX

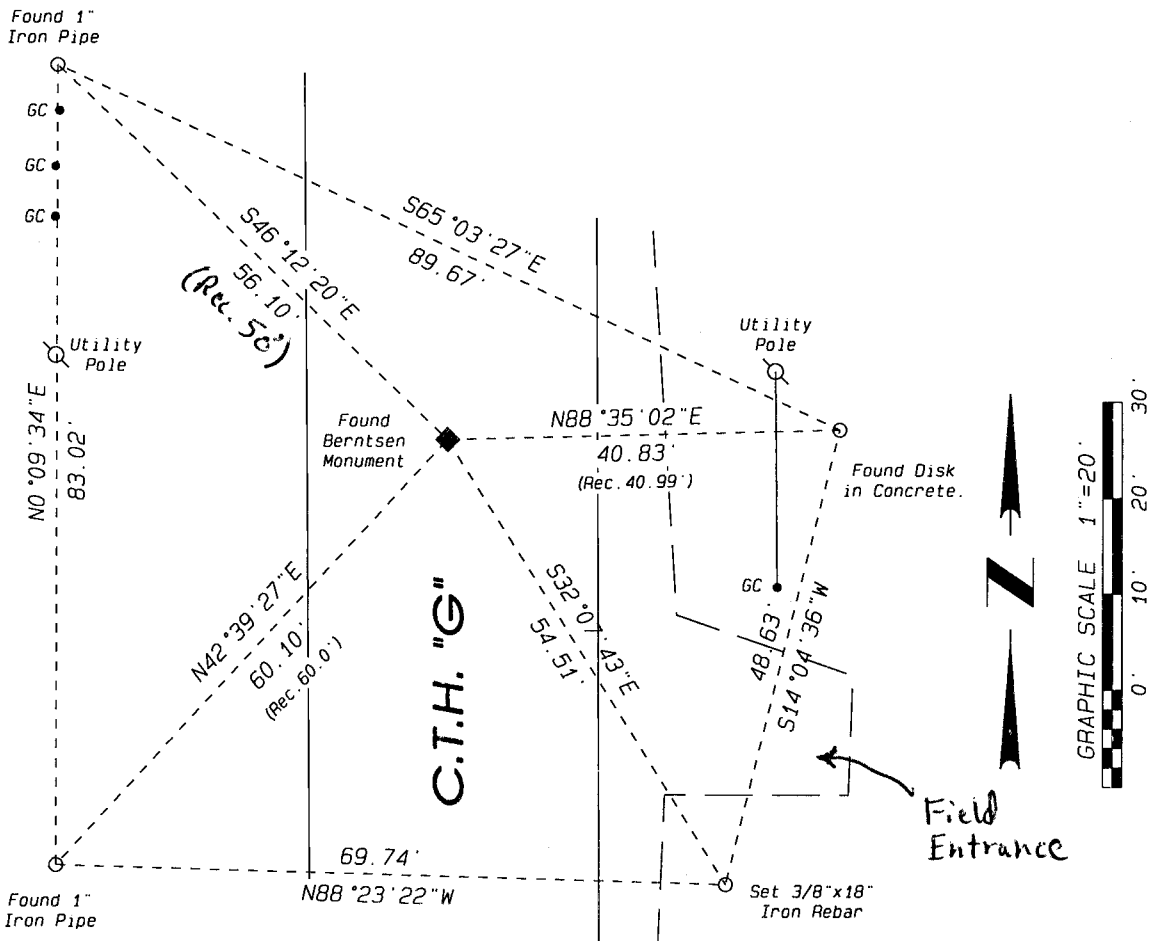
LA PRAIRIE TWP
ROCK COUNTY WI

IF AVAILABLE
 ROCK COUNTY COORDINATES PREFERRED

North _____ Elev. _____
 East _____
 Hor. Datum _____ Vert. Datum _____
 LATITUDE _____ ELLIPS. HT. _____
 LONGITUDE _____
 NAD83(91) _____ NETWORK ADJ. YR _____
 GPS (X) _____ TRAVERSE (X) _____
 BASED ON THE FOLLOWING CONTROL:

\blacklozenge CORNER MONUMENT \circ WITNESS MONUMENT

(a)
 BEARINGS ARE BASED ON: ROCK COUNTY PROJECTION
 Assumed $N0^{\circ}21'21''W$ along the West Line of
 $NW\frac{1}{4}$ of Section 19-2-13.



FIELD BOOK _____ PAGE # _____
 OR OBSERVATION SHEET _____

SHEET 1 OF 2

SHOW A PLAN VIEW DRAWING DEPICTING THE CORNER MONUMENT AND SURROUNDING PHYSICAL FEATURES, INCLUDING THE EXCAVATION AREA AND DEPTH.

PLANNING & ZONING COMMITTEE ADOPTED THIS FORM ON 12/2/1982

CORNER CODE N-1 (1)

(B) Describe any record evidence, monument evidence, occupational evidence, testimonial evidence or any other material evidence you considered, and whether the monument was found or placed.

Found Berntsen Monument.

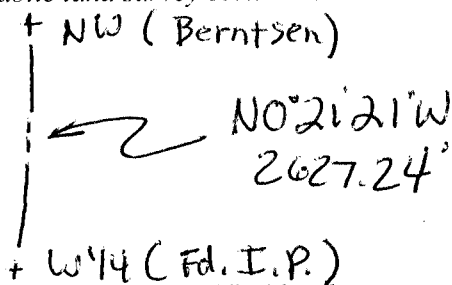
C) Was the corner restored through acceptance of (1) an obliterated evidence location, or, (2) a found perpetuated location?

Found perpetuated location

D) Describe any material discrepancy between the location of the corner as restored or reestablished and the location of that corner as previously restored or reestablished by distance and direction. Show the discrepancy on the plan view drawing under (a), above. Show the distances between the corner as previously restored or reestablished and (1) the corner as restored or reestablished, and (2) to at least 4 of the witness monuments shown on the drawing in (a), above.

Found 3 witness monuments. Set 1 witness monument.

(E) Was the corner reestablished through lost corner proportionate methods? If so, show the method, including the directions and distances to other public land survey corners used as evidence or used for proportioning the corner location.



Ronald J.

I, Combs, hereby certify that the corner location as identified by the corner code index was determined by me under my direction and control and that this U.S. Public Land Survey Monument Record is correct and complete to the best of my knowledge and belief.



9-19-2012

SHEET 2 OF 2

A.E. 7.08 REQUIREMENT

CORNER CODE

N-1 (1)