

U.S. PUBLIC LAND SURVEY MONUMENT RECORD

For Public Land Survey Corners In:

WI ADMINISTRATIVE CODE A-E 7.08 REQUIREMENT

T. 2 N. R. 13 E. 4th P.M.

REV 10/23/2004

USMONREC.DWG

CORNER CODE INDEX

4A PRAIRIE TWP

ROCK COUNTY WI

IF AVAILABLE

ROCK COUNTY COORDINATES PREFERRED

A	1	2	3	4	5	6	7	8	9	10	11	12	13	14	15	16	17	18	19	20	21	22	23	24	25	A
B						6																				B
C							5																			C
D								4																		D
E									3																	E
F										2																F
G											1															G
H																										H
J																										J
K																										K
L																										L
M																										M
N																										N
O																										O
P																										P
Q																										Q
R																										R
S																										S
T																										T
U																										U
V																										V
W																										W
X																										X
Y																										Y
Z																										Z

North _____ Elev. _____

East _____

Hor. Datum _____ Vert. Datum _____

LATITUDE _____ ELLIPS. HT. _____

LONGITUDE _____

NAD83(91) _____ NETWORK ADJ. YR _____

GPS (X) _____ TRAVERSE (X) _____

BASED ON THE FOLLOWING CONTROL:

PLACE MONUMENT SYMBOL AT PROPER LOCATION ON ABOVE INDEX

CORNER MONUMENT

WITNESS MONUMENT

(a)

BEARINGS ARE BASED ON: _____

FIELD BOOK _____ PAGE # _____

SHEET 1 OF 4

SHOW A PLAN VIEW DRAWING DEPICTING THE CORNER MONUMENT AND SURROUNDING PHYSICAL FEATURES, INCLUDING THE EXCAVATION AREA AND DEPTH.

PLANNING & ZONING COMMITTEE ADOPTED THIS FORM ON 12/2/1982

CORNER CODE 2-11(2)

LA626

(B) Describe any record evidence, monument evidence, occupational evidence, testimonial evidence or any other material evidence you considered, and whether the monument was found or placed.

1939 SUNNY VOL 3 PG 451 FD 6X6 STONE MON. SET 1 1/2 X18
CAPPED PIPE ON TOP.

1985 BARNES Z-11 & FB #2 PG 26 & 45 FD ALUM MON 3.5' NORTH
OF CENTER OF PVMT. FD ALUM MON.

1990 BARNES Z-11(1) FB#3 PG 61 FD ALUM & REFERENCED SAME.

RECOVERED ALUM. MON. PRIOR TO GRINDING & REFERENCED SAME.
MONUMENT WAS IN THE LATER STAGES OF DISOLVING. ACCEPTED
FD ALUM. MON. AFTER REPAVING I SET A DURA-NAIL IN THE PVMT
SURFACE.

C) Was the corner restored through acceptance of (1) an obliterated evidence location, or, (2) a found perpetuated location?

ALUM. MON IS IN HARMONY WITH REFERENCE MONUMENTS.

D) Describe any material discrepancy between the location of the corner as restored or reestablished and the location of that corner as previously restored or reestablished by distance and direction. Show the discrepancy on the plan view drawing under (a), above. Show the distances between the corner as previously restored or reestablished and (1) the corner as restored or reestablished, and (2) to at least 4 of the witness monuments shown on the drawing in (a), above.

NONE

(E) Was the corner reestablished through lost corner proportionate methods? If so, show the method, including the directions and distances to other public land survey corners used as evidence or used for proportioning the corner location.

I, **Donald Barnes**, hereby certify that the corner location as identified by the corner code index was determined by me under my direction and control and that this U.S. Public Land Survey Monument Record is correct and complete to the best of my knowledge and belief.

Seal

SHEET 1 OF 4

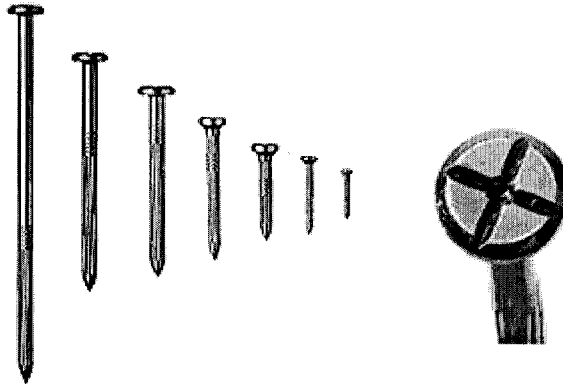
Subscribed
Donald Barnes

OCT 3, 2006

CORNER CODE
A.E. 7.08 REQUIREMENT

Z-11(2)

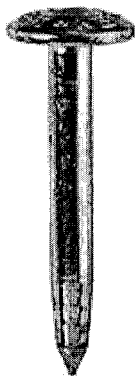
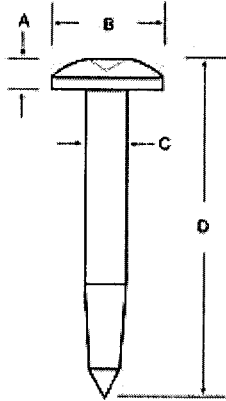
DuraNail
Exclusively From Berntsen



DuraNail

This steel nail will not bend or break and will drive into the asphalt with ease. Not like other nails, it has a deep cross on its larger head along with a center punch. This magnetic nail comes in a variety of lengths. You will receive The Magnetizer with each bag of nails, which will realign the magnetic field after installation to make your DuraNail more detectable

Steel Nail Markers



- A = 3/16" (5 mm)
- B = 1" (25 mm)
- C = 11/32" (9 mm)
- D = 3" (76 mm)

The Steel Nail Marker is super strong solid steel and drives easily into blacktop. "SURVEY MARK" is imprinted on top of nail for easy identification as a survey mark. The SNM1 has a 1" (25mm) convex top and conical recessed center chamfer for pinpoint accuracy.

Donald Baures
Oct 3, 2006

2 of 4

Z-11(2)

U.S. PUBLIC LAND SURVEY MONUMENT RECORD

For Public Land Survey Corners In:
T. 2N. R. 13E. 4th P.M.

WI ADMINISTRATIVE CODE A-E 7.08 REQUIREMENT
REV 10/23/2004 USMONREC.DWG

CORNER CODE INDEX

	1	2	3	4	5	6	7	8	9	10	11	12	13	14	15	16	17	18	19	20	21	22	23	24	25
A																									
B																									
C	6																								
D		5																							
E			4																						
F				3																					
G					2																				
H						1																			
I																									
J																									
K																									
L																									
M																									
N																									
O																									
P																									
Q																									
R																									
S																									
T																									
U																									
V																									
W																									
X																									
Y																									
Z																									

LA PRAIRIE TWP
ROCK COUNTY WI

IF AVAILABLE
ROCK COUNTY COORDINATES PREFERRED

North _____ Elev. _____

East _____

Hor. Datum _____ Vert. Datum _____

LATITUDE _____ ELLIPS. HT. _____

LONGITUDE _____

NAD83(91) _____ NETWORK ADJ. YR _____

GPS (X) _____ TRAVERSE (X) _____

BASED ON THE FOLLOWING CONTROL:

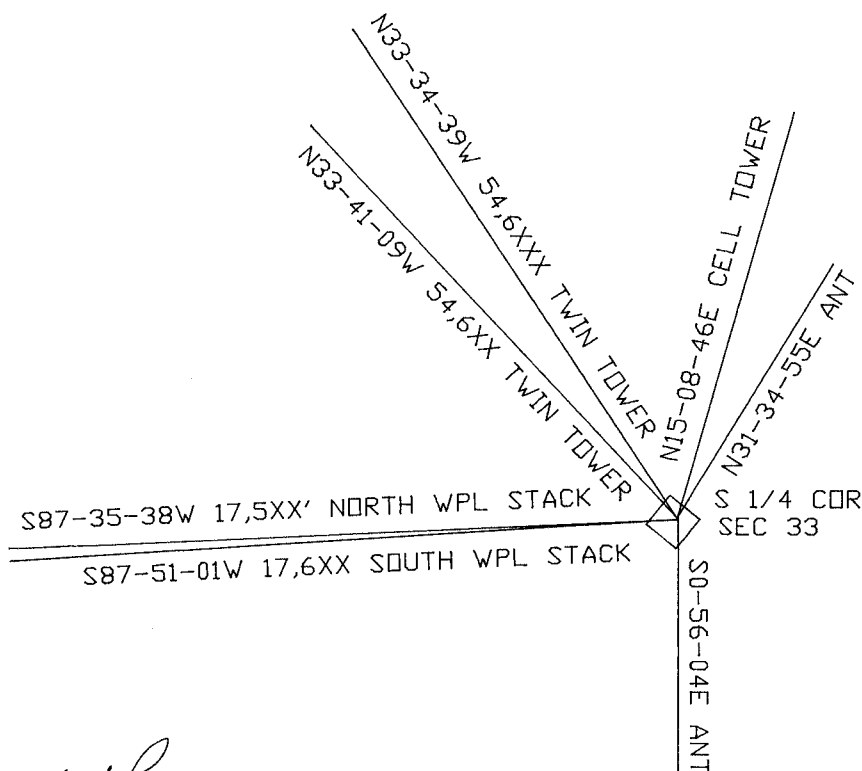
PLACE MONUMENT SYMBOL AT PROPER LOCATION ON ABOVE INDEX

CORNER MONUMENT

WITNESS MONUMENT

(a)

BEARINGS ARE BASED ON:



Donald Barnes
OCT 3 2006

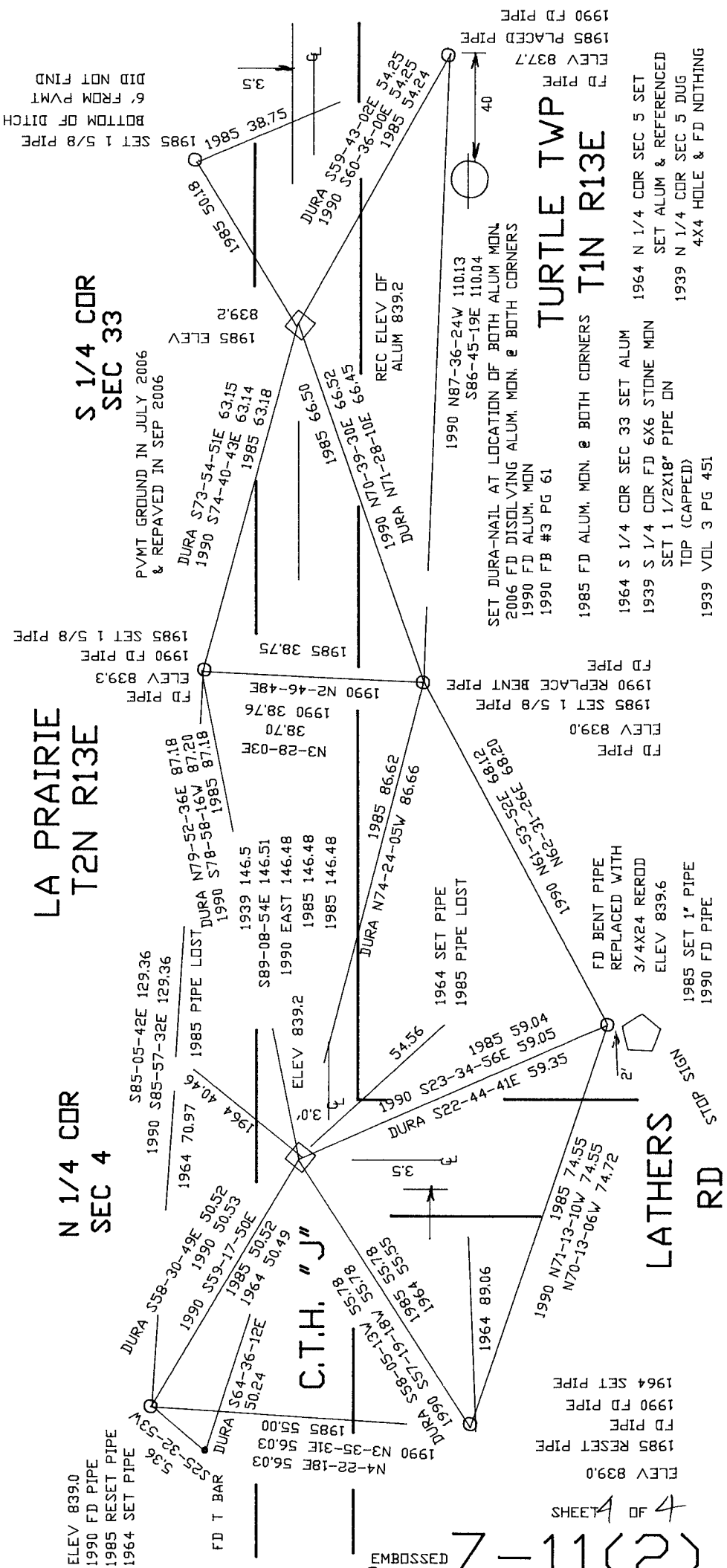
FIELD BOOK _____ PAGE # _____

SHEET 3 OF 4

SHOW A PLAN VIEW DRAWING DEPICTING THE CORNER MONUMENT AND SURROUNDING PHYSICAL FEATURES, INCLUDING THE EXCAVATION AREA AND DEPTH.

PLANNING & ZONING COMMITTEE ADOPTED THIS FORM ON 12/2/1982

CORNER CODE 2-11 (A)



**S 1/4 COR
SEC 33**

**LA PRAIRIE
T2N R13E**

**N 1/4 COR
SEC 4**

**TURTLE TWP
T1N R13E**

ELEV 8390
1990 FD PIPE
1985 RESET PIPE
1964 SET PIPE

FD T BAR

C.T.H. "J"

**LATHERS
RD**

SHEETS 1 OF 4

EMBOSSSED
SEAL

Z-11(2)

Paul Barnes
OCT 3 2006

1985 SET 1 5/8 PIPE
BOTTOM OF DITCH
6' FROM P.V.M.T
DID NOT FIND

P.V.M.T GROUND IN JULY 2006
& REPAVED IN SEP 2006

1990 N87-36-24W 110.13
S86-45-19E 110.04
SET DURA-NAIL AT LOCATION OF BOTH ALUM MON.
2006 FD DISSOLVING ALUM. MON. @ BOTH CORNERS
1990 FD ALUM. MON
1990 FB #3 PG 61

1985 FD ALUM. MON. @ BOTH CORNERS
1964 S 1/4 COR SEC 33 SET ALUM
1939 S 1/4 COR FD 6X6 STONE MON
SET 1 1/2X18" PIPE ON
TOP (CAPPED)
1939 VOL 3 PG 451

1985 S 1/4 COR SEC 33 SET ALUM
1939 S 1/4 COR FD 6X6 STONE MON
SET 1 1/2X18" PIPE ON
TOP (CAPPED)
1939 VOL 3 PG 451

FD BENT PIPE
REPLACED WITH
3/4X24 REROD
ELEV 839.6
1985 SET 1" PIPE
1990 FD PIPE

ELEV 8390
1985 RESET PIPE
1990 FD PIPE
1964 SET PIPE

STOP SIGN