

Paper weight-110# (minimum)

Black nonfading ink required

U.S. PUBLIC LAND SURVEY MONUMENT RECORD

For Public Land Survey Corners In:

WI ADMINISTRATIVE CODE A-E 7.08 REQUIREMENT

T. 3N. R. 12E. 4th P.M.

REV 10/23/2004

USMONREC.DWG

CORNER CODE INDEX

A	1	2	3	4	5	6	7	8	9	10	11	12	13	14	15	16	17	18	19	20	21	22	23	24	25	A	
B		6				5				4					3					2						1	B
C																											C
D																											D
E																											E
F																											F
G																											G
H																											H
J																											J
K																											K
L																											L
M																											M
N																											N
O																											O
P																											P
Q																											Q
R																											R
S																											S
T																											T
U																											U
V																											V
W																											W
X																											X
Y																											Y
Z																											Z

JANESVILLE TWP

ROCK COUNTY WI

IF AVAILABLE
ROCK COUNTY COORDINATES PREFERRED

North _____ Elev. _____

East _____

Hor. Datum _____ Vert. Datum _____

LATITUDE _____ ELLIPS. HT. _____

LONGITUDE _____

NAD83(91) _____ NETWORK ADJ. YR _____

GPS (X) _____ TRAVERSE (X) _____

BASED ON THE FOLLOWING CONTROL:

PLACE MONUMENT SYMBOL AT PROPER LOCATION ON ABOVE INDEX

CORNER MONUMENT

WITNESS MONUMENT

(a)

BEARINGS ARE BASED ON: _____

FIELD BOOK _____ PAGE # _____ SHEET _____ OF _____

SHOW A PLAN VIEW DRAWING DEPICTING THE CORNER MONUMENT AND SURROUNDING PHYSICAL FEATURES, INCLUDING THE EXCAVATION AREA AND DEPTH.

PLANNING & ZONING COMMITTEE ADOPTED THIS FORM ON 12/2/1982

CORNER CODE A-19(1)

JA 510
FB630^

(B) Describe any record evidence, monument evidence, occupational evidence, testimonial evidence or any other material evidence you considered, and whether the monument was found or placed.

1835 (JAN 7) MULLETT & BRINK ON SOUTH SIDE SECTION 35 T4N

R12E

- 330 ENTER MARSH
1089 LEAVE MARSH
1582.02 B. OAK 18
2640 SET 1/4 SECTION POST BUR OAK 16 N50W 23.1'
BUR OAK 12 N71E 39.6'
3243.9 BUR OAK 12
5109.72 BUR OAK 10
5280 SET POST COR SECTIONS 34 & 35 BUR OAK
16 N44W 64.68 BUR OAK 8 N27E 61.38'
LAND BROKEN 2ND RATE BUR W & B OAK
- 1870 RUGER VOL 2 PG 20 N 1/4 COR SEC 2 - ESTABLISHED 1/4 COR
FROM NE & NW CORNERS SEC 2. SET STAKE. SAID STAKE IS
17.82' EAST OF BOARD FENCE. CUT NOTCH ON FENCE WHERE
TOWN LINE CROSSES IT. VAR 7-10 2658.48 TO NE & NW
CORNERS OF SEC 2
- 1875 RUGER VOL 2 PG 188 & #6571 FD OLD STAKE & WHERE
STUMPS OF BOTH BTS HAD BEEN DUG OUT. DROVE STAKE &
SURROUNDED IT WITH 3 HH STONES. CUT NOTCHES IN
BOARD FENCE WHERE TOWN LINE CROSSES IT. SHOWS WEST
OF N 1/4 COR SEC 2. VAR 5-39 2641.32 TO CEN SEC 35 &
5289.57 TO N 1/4 COR SEC 35. (DOES STATE THE JOG
DISTANCE)
- 1980 BARNES VOL 6 PG 17 SHOWS RECORD DISTANCES.
- 1980 BARNES VOL 6 PG 20 I FD 3 HH AND PIECES OF WOOD
STAKE. I PLACED AN ALUM. MON. THIS LOCATION IS IN
HARMONY WITH THE INTERIOR MONUMENTS THAT RUGER
PLACED IN 1875
- 1985 COMBS "LOCKWOOD FIRST ADD." BK 32 PG 27 C.I. SW COR
OF LOT 34, 179.54' SOUTH OF SOUTH R/W LINE OF
ABORDEEN RD. ANGLE 89-25-55 @ S 1/4 COR SEC 35 FROM
CUT STONE @ W1/16TH COR OF SE 1/4 SEC 35 TO SE COR SEC
35.
- 1987 BARNES VOL 6 PG 365 ALUM. MON. WEST OF N 1/4 COR SEC 2.
S89-01-38W 2643.51 TO SW COR SEC 35, N89-08-42E
2663.14 TO SE COR SEC 34.
- 1987 Z-19 LEUENBERGER (VOGO RON COMBS) BOB PLACED THE FD
PIPE AT THE CORNER.
- 1987 BARNES Z-19 DISCREPANCY NOTED IN DRAWING & SHEET. FD
2" PIPE S75-56-51E 10.20 OF ALUM. MON. & 2" PIPE N89-06-
29E 13.28 OF THE 2" PIPE. REF. SAME. SET CARSONITE POST
NEXT TO ALUM. MON. LEUENBERGER CALLS FOR 13.23
BETWEEN THE 2" PIPES. 278,504.26; 2,256,996.40 ELEV
918.2'.
- 1987 BARNES OBSERVATION SHEET #710 CALLS FOR ALUM. MON.
& FD TWO 2" PIPES WHICH WERE 13.29' BETWEEN EACH
OTHER. THE ONE PIPE IS S75-52E 10.20' FROM THE ALUM
MON & THE OTHER IS S84-23E 23.2X FROM THE ALUM. MON.
REFERENCED ALL FOUND MONUMENTS. N 1/4 COR SEC 2 DUG
HOLE 2' IN DAI & PLACED POLY. MON. WITH CARSONITE POST.
ON TAPE OF COORDINATES WHICH ARE ATTACHED A NOTE-
PLACED BUT PULLED POLY. JANESVILLE FB#1 PG 63
- 1987 BARNES JANESVILLE TWP FIELD BK # 1 PG 63 DID NOT
ESTABLISH THE N 1/4 COR SEC 2 BECAUSE:
1) SW COR OF SEC 36 FULTON TWP & THE NE COR SEC 2 ARE
IN QUESTION. SUNNY NEVER STATED WHAT HE FOUND. DOES
NOT FIT DISTANCE TO THE EAST & WEST.
2) N 1/4 COR SEC 1 & S 1/4 COR SEC 36 CORNERS ARE ALSO
QUESTIONED. I FOUND STAKE SURROUNDED BY 3 HH AT THE
S 1/4 COR SEC 36 FULTON & FOUND NOTHING AT N 1/4 COR
SEC 1. RECORD CORNER AT S 1/4 COR SEC 36 WAS A STAKE
SURROUNDED BY 4 HH. THE CORNER I FOUND MAY

SHEET 1 OF 3

CORNER CODE A-19(1)

Donald
Barnes 12/13/07

JA 510
FUGSB

- HAVE BEEN THE N 1/4 COR SEC 1 & HE SHOULD HAVE DUG TO THE WEST INSTEAD OF THE EAST.
DUG 6.3' E/W X 4' N/W X 1.2' DEEP HOLE & FOUND NOTHING. THE CENTER OF THE HOLE WAS ON LINE WITH THE ALUM MON & THE NE COR SEC 2 & 14.7' EAST OF THE ALUM. MON.
- 1987 BARNES A-19 S 1/4 COR SEC 35 278,504.20; 2,256,996.39' SHOWS THE SAME AS Z-19
- 1990 COMBS CSM VOL 14 PG 441 C.I. 2662.82 TO C.I. @ SE COR SEC 35
- 1993 COMBS "LOCKWOOD SECOND ADD." BK 32 PG 146 C.I. S89-38-23E 13.24' TO N 1/4 COR SEC 2. SET 1 1/4X30" ROD ON LINE WITH S 1/4 COR SEC 35 & SE COR SEC 35 @ N 1/4 COR SEC 2. N 1/4 COR SEC 2 IS 152.21' NORTH OF CENTER OF PIPELINE EASEMENT. CALLS FOR CENTER OF SEC 35 & N 1/4 COR SEC 35 COMMENCING @ S 1/4 COR SEC 35 NOO-55-42E 659.56 TO FD 6X6 CUT STONE. COMMENCING @ S 1/4 COR SEC 35 THENCE S89-38-23E 981.8 TO SUB LOT.
- 1994 COMBS #5540 M.I. "LOCKWOOD SECOND ADD. BK 32 PG 146 STATES NOTHING ABOUT N 1/4 COR SEC 2. SET PIN 13.24 EAST OF N 1/4 COR SEC 2 & SET PIN 30.0' SOUTH OF PREVIOUSLY MENTIONED SET PIN
- 1998 COMBS CSM VOL 22 PG 285441 C.I. 2662.82 TO C.I. @ SE COR SEC 35

FD ALUM & POLY MONUMENTS & REFERENCE MONUMENTS

C) Was the corner restored through acceptance of (1) an obliterated evidence location, or, (2) a found perpetuated location?

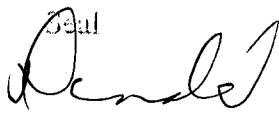
ACCEPTED FD ALUM & POLY MONUMENTS.

D) Describe any material discrepancy between the location of the corner as restored or reestablished and the location of that corner as previously restored or reestablished by distance and direction. Show the discrepancy on the plan view drawing under (a), above. Show the distances between the corner as previously restored or reestablished and (1) the corner as restored or reestablished, and (2) to at least 4 of the witness monuments shown on the drawing in (a), above.

FD 2" PIPES WHICH DON'T AGREE WITH ALUM. MON. RUGER SET N 1/4 COR SEC 2 MIDWAY BETWEEN NE COR SEC 2 & NW COR SEC 2 (ALSO THE SW COR SEC 35 FULTON TWP)
IN 1980, I FOUND 3 HH SURROUNDING PIECES OF A WOOD STAKE AS CALLED FOR BY RUGER IN 1875.

(E) Was the corner reestablished through lost corner proportionate methods? If so, show the method, including the directions and distances to other public land survey corners used as evidence or used for proportioning the corner location.

I, Donald Barnes, hereby certify that the corner location as identified by the corner code index was determined by me under my direction and control and that this U.S. Public Land Survey Monument Record is correct and complete to the best of my knowledge and belief.

Seal


Emboss

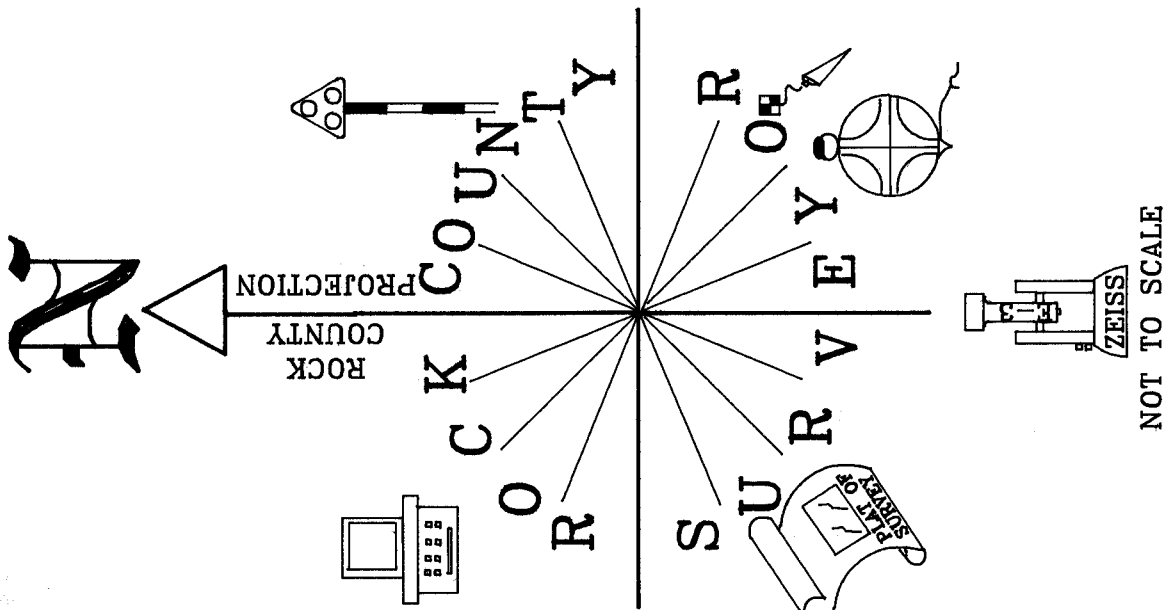
Barnes

SHEET 2 OF 3

CORNER CODE A-19(1)

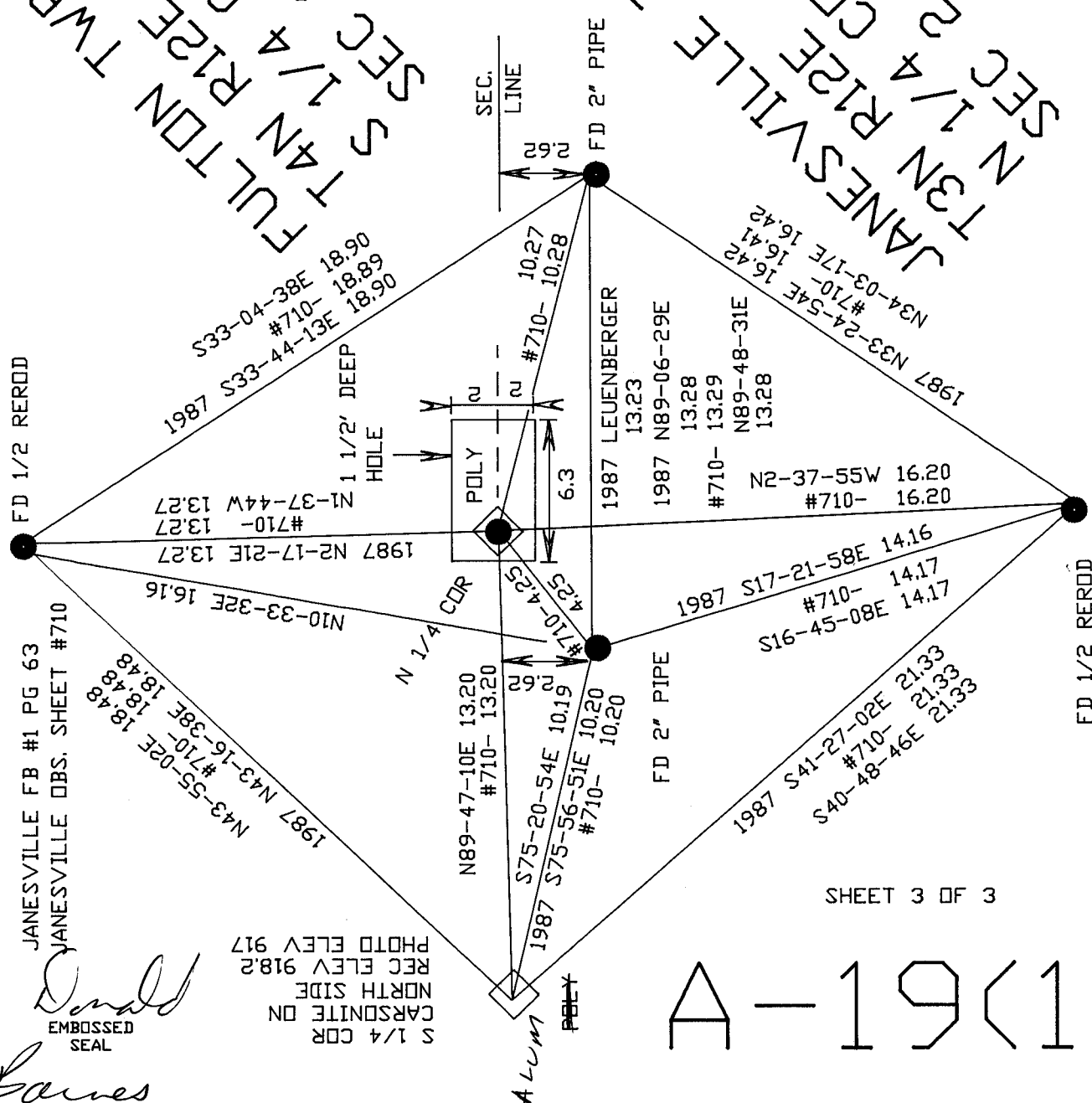
A.E. 7.08 REQUIREMENT

12/13/07



JANESVILLE TWP
 SEC 1/4 COR
 TAN R12E
 T35 CDR

JANESVILLE TWP
 SEC 1/4 COR
 TAN R12E
 T35 CDR



JANESVILLE FB #1 PG 63
 JANESVILLE OBS. SHEET #710

Donald
 EMBOSSED SEAL

James
 12/3/07

S 1/4 CDR
 CARSONITE DN
 NORTH SIDE
 REC ELEV 918.2
 PHOTO ELEV 917

SHEET 3 OF 3

A-19(1)