

Paper weight-110# (minimum)

Black nonfading ink required

U.S. PUBLIC LAND SURVEY MONUMENT RECORD

For Public Land Survey Corners In:

WI ADMINISTRATIVE CODE A-E 7.08 REQUIREMENT

T. 3 N. R. 12 E. 4th P.M.

REV 10/23/2004

USMONREC.DWG

CORNER CODE INDEX

JANESVILLE TWP

ROCK COUNTY WI

IF AVAILABLE

ROCK COUNTY COORDINATES PREFERRED

| | | | | | | | | | | | | | | | | | | | | | | | | | | |
|---|---|---|---|---|---|---|---|---|---|----|----|----|----|----|----|----|----|----|----|----|----|----|----|----|----|---|
| A | 1 | 2 | 3 | 4 | 5 | 6 | 7 | 8 | 9 | 10 | 11 | 12 | 13 | 14 | 15 | 16 | 17 | 18 | 19 | 20 | 21 | 22 | 23 | 24 | 25 | A |
| B | | | | | | | | | | | | | | | | | | | | | | | | | | B |
| C | | | | | | | | | | | | | | | | | | | | | | | | | | C |
| D | | | | | | | | | | | | | | | | | | | | | | | | | | D |
| E | | | | | | | | | | | | | | | | | | | | | | | | | | E |
| F | | | | | | | | | | | | | | | | | | | | | | | | | | F |
| G | | | | | | | | | | | | | | | | | | | | | | | | | | G |
| H | | | | | | | | | | | | | | | | | | | | | | | | | | H |
| I | | | | | | | | | | | | | | | | | | | | | | | | | | I |
| J | | | | | | | | | | | | | | | | | | | | | | | | | | J |
| K | | | | | | | | | | | | | | | | | | | | | | | | | | K |
| L | | | | | | | | | | | | | | | | | | | | | | | | | | L |
| M | | | | | | | | | | | | | | | | | | | | | | | | | | M |
| N | | | | | | | | | | | | | | | | | | | | | | | | | | N |
| O | | | | | | | | | | | | | | | | | | | | | | | | | | O |
| P | | | | | | | | | | | | | | | | | | | | | | | | | | P |
| Q | | | | | | | | | | | | | | | | | | | | | | | | | | Q |
| R | | | | | | | | | | | | | | | | | | | | | | | | | | R |
| S | | | | | | | | | | | | | | | | | | | | | | | | | | S |
| T | | | | | | | | | | | | | | | | | | | | | | | | | | T |
| U | | | | | | | | | | | | | | | | | | | | | | | | | | U |
| V | | | | | | | | | | | | | | | | | | | | | | | | | | V |
| W | | | | | | | | | | | | | | | | | | | | | | | | | | W |
| X | | | | | | | | | | | | | | | | | | | | | | | | | | X |
| Y | | | | | | | | | | | | | | | | | | | | | | | | | | Y |
| Z | | | | | | | | | | | | | | | | | | | | | | | | | | Z |

North _____ Elev. _____

East _____

Hor. Datum _____ Vert. Datum _____

LATITUDE _____ ELLIPS. HT. _____

LONGITUDE _____

NAD83(91) _____ NETWORK ADJ. YR _____

GPS (X) _____ TRAVERSE (X) _____

BASED ON THE FOLLOWING CONTROL:

PLACE MONUMENT SYMBOL AT PROPER LOCATION ON ABOVE INDEX

CORNER MONUMENT

WITNESS MONUMENT

BEARINGS ARE BASED ON: _____

FIELD BOOK _____ PAGE # _____

SHEET 1 OF 3

SHOW A PLAN VIEW DRAWING DEPICTING THE CORNER MONUMENT AND SURROUNDING PHYSICAL FEATURES, INCLUDING THE EXCAVATION AREA AND DEPTH.

PLANNING & ZONING COMMITTEE ADOPTED THIS FORM ON 12/2/1982

CORNER CODE N-19(1)

JA570 T3NR12E

(B) Describe any record evidence, monument evidence, occupational evidence, testimonial evidence or any other material evidence you considered, and whether the monument was found or placed.

1833 HARRISON (DEC 14) PG 14 EAST ON RANDOM BET. 14 & 23 VAR7-50E

165 TRAIL CRS N & S.
177.54 INT. RIGHT BANK OF ROCK RIVER AND SET A MEANDER POST {WO 24 S62W 44.22' RED O 10 N33W 53.46' OFFSET SOUTH 122' EAST 823.68' NORTH 122.0' TO TRUE LINE
1001.22 LEAVE RIVER & SET MEAN. POST {WO 24 S20W 17.82' WO 36 N71E 46.2'
2640.00 QUARTER SEC COR {WO 18 S35E 44.88', WO 14 N18E 55.44'
4088.70 INT. RIGHT BANK OF ROCK RIVER. SET MEANDER POST {RED OAK 18 S64W WHITE O 10 N93E
LAND & ? SAME?

1836 LYON (MARSH) [EAST OF ROCK RIVER] PG 42 & 60 EAST RANDOM BETWEEN SECTIONS 14 & 23 VAR 6-10E FROM POST ON RIGHT BANK OF ROCK RIVER.

4088.70 POST ON RIGHT BANK OF RIVER
4563.90 OVER RIVER CRS S SW
5326.86 INTERSECTED N & S LINE 109.56' SOUTH OF POST LAND HILLY & 2ND RATE TIMBER WHITE & BR OAK & HICHORY
WEST CORRECTED BETWEEN SECTIONS 14 & 23

762.96 SET POST ON BLUFF ON LEFT BANK OF ROCK RIVER COR TO SURVEYING BEARING {WHITE OAK 24 N39-50E 38.28' WHITE OAK 20 S34E 50.82'

1238.16 TO POST ON RIGHT BANK OF RIVER

1863 LOCKE VOL 1 PG 188 FD OLD STAKE VAR7-52 ON NORTH LINE OF SEC 23. VAR 7-55 2636.70 TO GEN OF SEC 23 WHICH IS SET STAKE & 4 STONES IN MOUND PIT 3FT NW 1 LIMESTONE ON SOUTH, 1 ON E, 1 HARDEAD ON N & 1 ON W. VAR7-55 5273.40 TO S 1/4 COR SEC 23. @ S 1/4 COR SEC 23 FD SOUTH B TREE CORNER OF CEMETERY FENCE NEAR RIGHT. SET POST IN MOUND PIT 3 FT SE @ W 1/16TH COR OF SE 1/4 OF SEC 23. NORTH LINE OF SEC 23 @ ROCK RIVER NOTE: MEANDERING B TREES ENTIRELY GONE, ALL PLOWED OVER. [DOES NOT CALL FOR THE W 1/4 & E 1/4 COR SEC 23, BUT CALLS FOR VAR 7-48-30 1519.98 FROM THE CENTER OF SEC 23 TO THE MP ON THE WEST BANK ON THE 1/4 LINE]. NOTE ON BOTTOM OF PAGE: MEANDER LINE OF RIVER OF RIVER. COMMENCES ON SOUTH LINE OF SEC AT BR OR BL O 17 INCHES ON CORNER ON RIVER, RUNNING THENCE N9-30W 198'; THENCE N17-30W 330'; THENCE N13-30W 462'; THENCE N15-30W 122'; THENCE N20-30W 122'; THENCE N60-45W 115.17'; THENCE N13E 122'; THENCE N12W 66'; THENCE N28-45W 264'; THENCE N32W 181.5'; THENCE N31W 215.82'; THENCE N39-15W 264'; THENCE N45W 122'; THENCE N42W 240.9' TO THE QUARTER LINE, 13.2' EAST OF POST IN MOUND-BEARINGS GIVEN ACCORDING TO MAGNETIC MERIDIAN AS INDICATED BY NEEDLE.

1878 RUGER VOL 2 PG 238 & #5702 FD HH STONE AT COR. ALSO FD REMAINS OF NE BT STUMP & SE BT STUMP SHOULD READ S55E INSTEAD OF S34E DROVE STAKE AT COR & SURROUNDED IT BY 5 LIME & 1 HH STONES. SET HH STONE

SHEET 1 OF 3
CORNER CODE N-19 (1)

Ernie Barnes
Nov 14, 2008

JA570 T3NR12E

15X9X7 SURROUNDED BY 4 LIMESTONES @ CENTER OF SEC 23. S 1/4 COR SEC 23 SEE SEC 26 PG 38 . DROVE STAKE & SURROUNDED IT BY 4 HH @ E 1/16TH COR OF SW 1/4 SEC 23. VAR6-06 2634.72 FROM N 1/4 TO CEN OF SEC 23, VAR6-06 5269.44 TO S 1/4 COR SEC 23. VAR 6-33 2647.92 TO W 1/4 COR SEC 23

1921 ?? VOL 3 PG 114 SURVEY IN SEC 14. NORTH LINE NE 1/4 SEC 23 IS USED WITH POINT OF SURVEY 174 WESTERLY OF NE COR SEC 23. PROBABLY ALL ON THE EAST SIDE OF THE RIVER.

1933 SUNNY VOL 3 PG 232 CALLS FOR PIPE ON WEST R/W LINE OF STH 92 ON E/W 1/4 LINE SEC 23 453.4' WEST OF CENTER OF SEC 23. STATES IRON PIPE MON. AT CEN OF SEC 23.

1934 SUNNY VOL 3 PG 247 CALLS FOR CEN OF SEC 23 BUT STATES NOTHING ABOUT MON. SHOWS NORTH & EAST OF USH 14.

1938 SUNNY VOL 3 PG 386 FD PIPE MON @ CEN OF SEC 23, SB6-29E 2248.7 FROM PIPE OF WEST R/W TO W 1/4 COR SEC 23 (2248.7 + 453.4) CEN TO W 1/4 COR SEC 23.

1949 KAKUSKE #6660 & 6667 @ SW COR SEC 14 IP SURROUNDED BY 4 HH. SB5-33W FROM SW SEC 14 ALONG SOUTH LINE SEC 15, S5-05E FROM SW COR SEC 14 ALONG WEST LINE OF SEC 23, NB5-33E 101.6 ALONG NORTH LINE SEC 23 TO PIPE. FROM PIPE NB5-33E 68.3 ALONG NORTH LINE SEC 23 TO PIPE.

1960 BATTERMAN #5659 EASTERLY ON SEC LINE FROM FD 1" PIPE @ NW COR SEC 23 169.82 TO FD PIPE WHICH IS 60 +/- WEST OF ROCK RIVER. ANGLE 89-37-30 FROM NW COR SEC 23 FROM NORTH LINE OF SEC 23 TO WEST LINE OF SEC 23.

FD 2 1/2" PIPE SURROUNDED BY 4 LIMESTONES. THE TOP OF THE PIPE IS ABOUT 0.3' BELOW THE SURFACE.

C) Was the corner restored through acceptance of (1) an obliterated evidence location, or, (2) a found perpetuated location?

ACCEPTED FOUND PERPETUATED LOCATION

D) Describe any material discrepancy between the location of the corner as restored or reestablished and the location of that corner as previously restored or reestablished by distance and direction. Show the discrepancy on the plan view drawing under (a), above. Show the distances between the corner as previously restored or reestablished and (1) the corner as restored or reestablished, and (2) to at least 4 of the witness monuments shown on the drawing in (a), above.

NONE

(E) Was the corner reestablished through lost corner proportionate methods? If so, show the method, including the directions and distances to other public land survey corners used as evidence or used for proportioning the corner location.

NO

I, **Donald Barnes**, hereby certify that the corner location as identified by the corner code index was determined by me under my direction and control and that this U.S. Public Land Survey Monument Record is correct and complete to the best of my knowledge and belief.

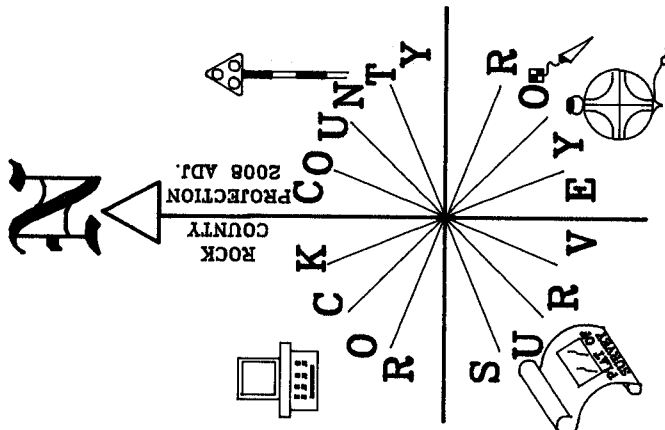
Seal

Embossed
Donald Barnes
Nov 14, 2008

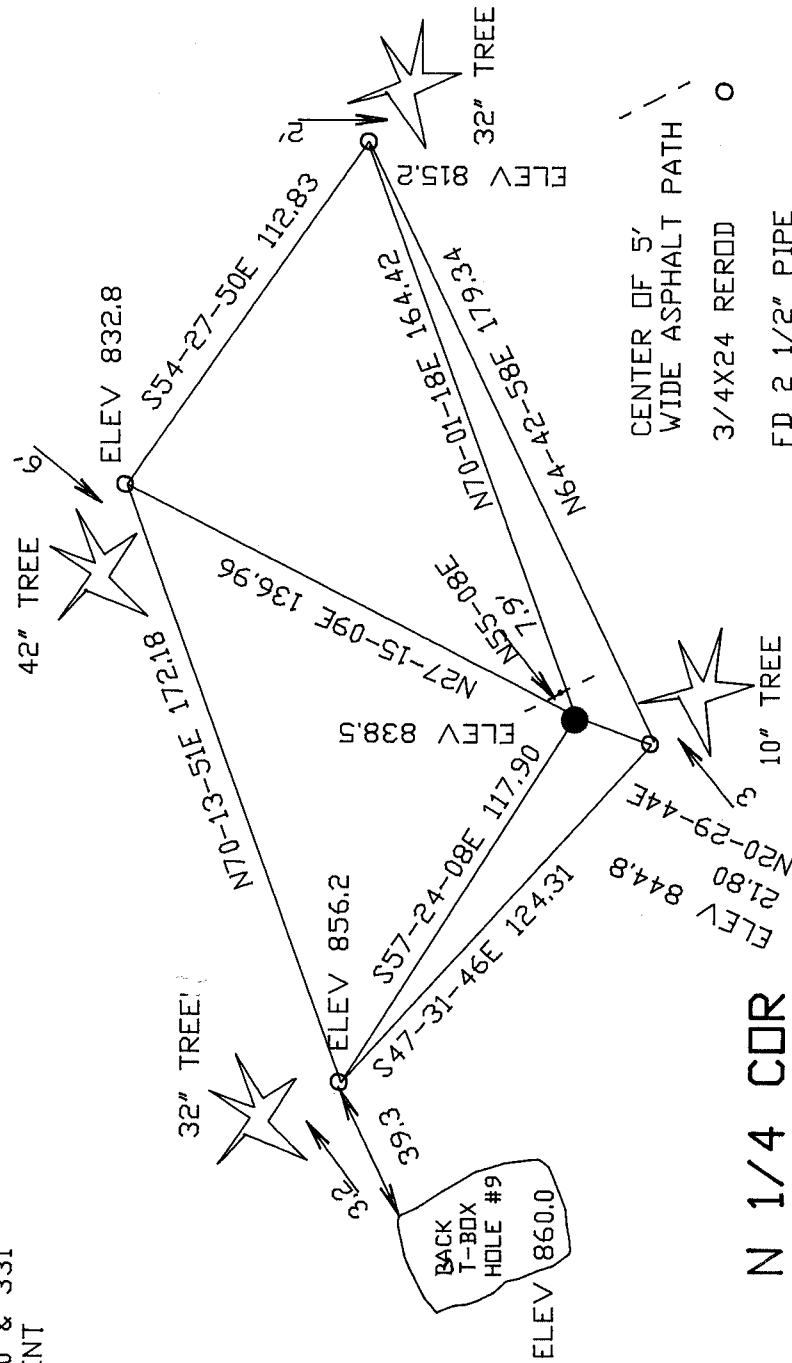
SHEET 2 OF 3

CORNER CODE **N-19** (1)

A.E. 7.08 REQUIREMENT



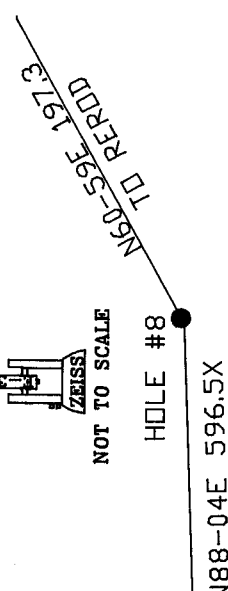
VERTICAL DATUM BASED
ON ORTHO PHOTOS
OBSERVATION SHEETS #1,2,570,&1331
USED JANESVILLE TWP PROJ.
STATIONS 330 & 331
#331 WAS BENT



CENTER OF 5'
WIDE ASPHALT PATH
3/4X24 REROD
FD 2 1/2" PIPE
SURROUNDED BY 4
LIMESTONES, 0.3'
BELOW GRADE
N 1/4 COR SEC 23

N 1/4 COR
SEC 23
T3N R12
JANESVILLE TWP

GOLF COURSE



Donald James
NOV 14, 2008

T-BOX HOLE #8
NOT TO SCALE
ZEISS
SHEET 3 OF 3
N-19 (1)