

U.S. PUBLIC LAND SURVEY MONUMENT RECORD

For Public Land Survey Corners in:

WI ADMINISTRATIVE CODE A-E 7.08 REQUIREMENT

T. 3 N., R. 12 E 4th P.M.

CORNER CODE INDEX

JANESVILLE TWP

ROCK COUNTY, WI

IF AVAILABLE
ROCK COUNTY COORDINATES REFERRED

1	2	3	4	5	6	7	8	9	10	11	12	13	14	15	16	17	18	19	20	21	22	23	24	25
A	6																							
B		5																						
C			4																					
D				3																				
E					2																			
F						1																		
G	7	8	9	10	11	12																		
H																								
I																								
J																								
K	18	17	16	15	14	13																		
L																								
M																								
N																								
O																								
P	19	20	21	22	23	24																		
Q																								
R																								
S																								
T	30	29	28	27	26	25																		
U																								
V																								
W																								
X																								
Y																								
Z																								

PLACE MONUMENT SYMBOL  AT PROPER LOCATION ON ABOVE INDEX

North 262,260.16 ← Elev. 798.1 →
 East 2,254,664.09 ← AS GIVEN ON 7/21/87 TIE SHEET. →
 Hor. Datum _____ Vert. Datum _____

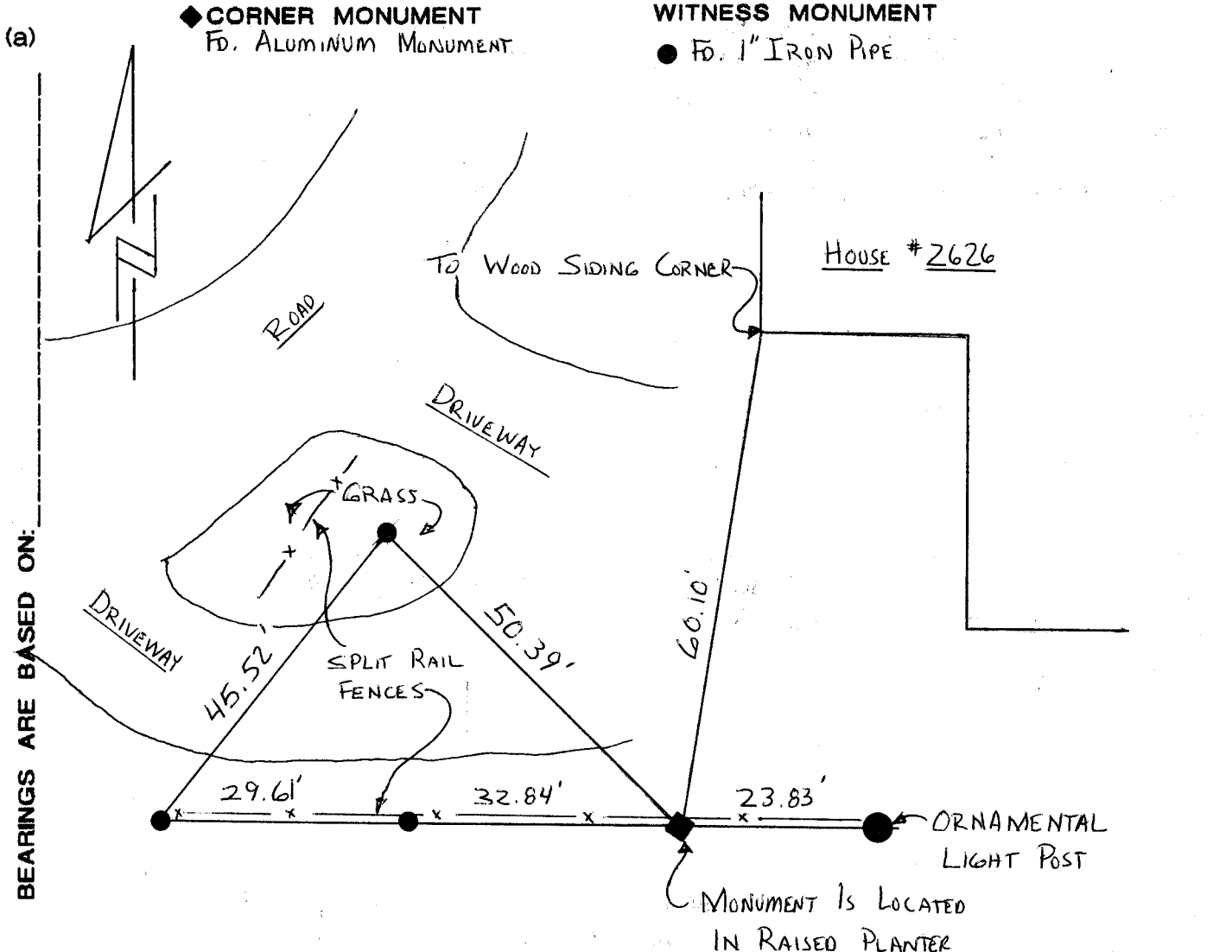
LATITUDE _____ ELLIPS. HT. _____

LONGITUDE _____

ELLIPS. DATUM _____
NAD83(91) _____ COUNTY _____ LIST _____

GPS (X) _____ TRAVERSE (X) _____

BASED ON THE FOLLOWING CONTROL: _____



FIELD BOOK _____ PAGE # _____ SHEET _____ OF _____

SHOW A PLAN VIEW DRAWING DEPICTING THE CORNER MONUMENT AND SURROUNDING PHYSICAL FEATURES, INCLUDING THE EXCAVATION AREA AND DEPTH.

PLANNING & ZONING COMMITTEE ADOPTED THE ABOVE FORM ON 12/2/1982

CORNER CODE N 17 (1)

B) Describe any record evidence, monument evidence, occupational evidence, testimonial evidence or any other material evidence you considered, and whether the monument was found or placed.

I found and accepted the aluminum monument as recorded in the U.S. Public Land Survey Monument Record by Mr. Donald Barnes, dated July 21, 1987.

C) Was the corner restored through acceptance of (1) an obliterated evidence location, or, (2) a found perpetuated location?

Found perpetuated location.

D) Describe any material discrepancy between the location of the Corner as restored or reestablished and the location of that corner as previously restored or reestablished by distance and direction. Show the discrepancy on the plan view drawing under (a), above. Show the distances between the corner as previously restored or reestablished and (1) the corner as restored or reestablished, and (2) to at least 4 of the witness monuments shown on the drawing in (a), above.

No discrepancy.

E) Was the corner reestablished through lost corner proportionate methods? If so, show the method, including the directions and distances to other public land survey corners used as evidence or used for proportioning the corner location.

No.

I, *Mark J. Krizan*, hereby certify that the corner location as identified by the corner code index was determined by me under by direction and control and that this U.S. Public Land Survey Monument Record is correct and complete to the best of my knowledge and belief.