

U.S. PUBLIC LAND SURVEY MONUMENT RECORD

For Public Land Survey Corners in the

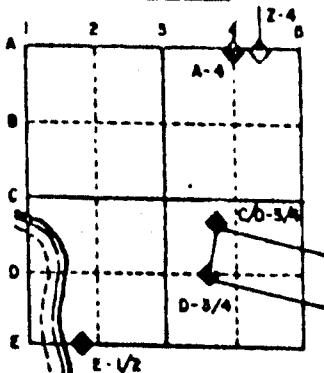
T. 3 N., R. 12 E.

CORNER CODE INDEX

	1	2	3	4	5	6	7	8	9	10	11	12	13	14	15	16	17	18	19	20	21	22	23	24	25
A																									
B																									
C	6	5	4	3	2																				
D		1																							
E																									
F																									
G	7	8	9	10	11	12																			
H																									
I																									
J																									
K																									
L	16	17	18	15	14	13																			
M																									
N																									
O																									
P	19	20	21	22	23	24																			
Q																									
R																									
S																									
T	30	29	28	27	26	25																			
U																									
V																									
W																									
X																									
Y																									
Z																									

PLACE MONUMENT SYMBOL (◆) AT PROPER LOCATION ON ABOVE INDEX

EXAMPLE



JANESVILLE TWP
ROCK COUNTY WI

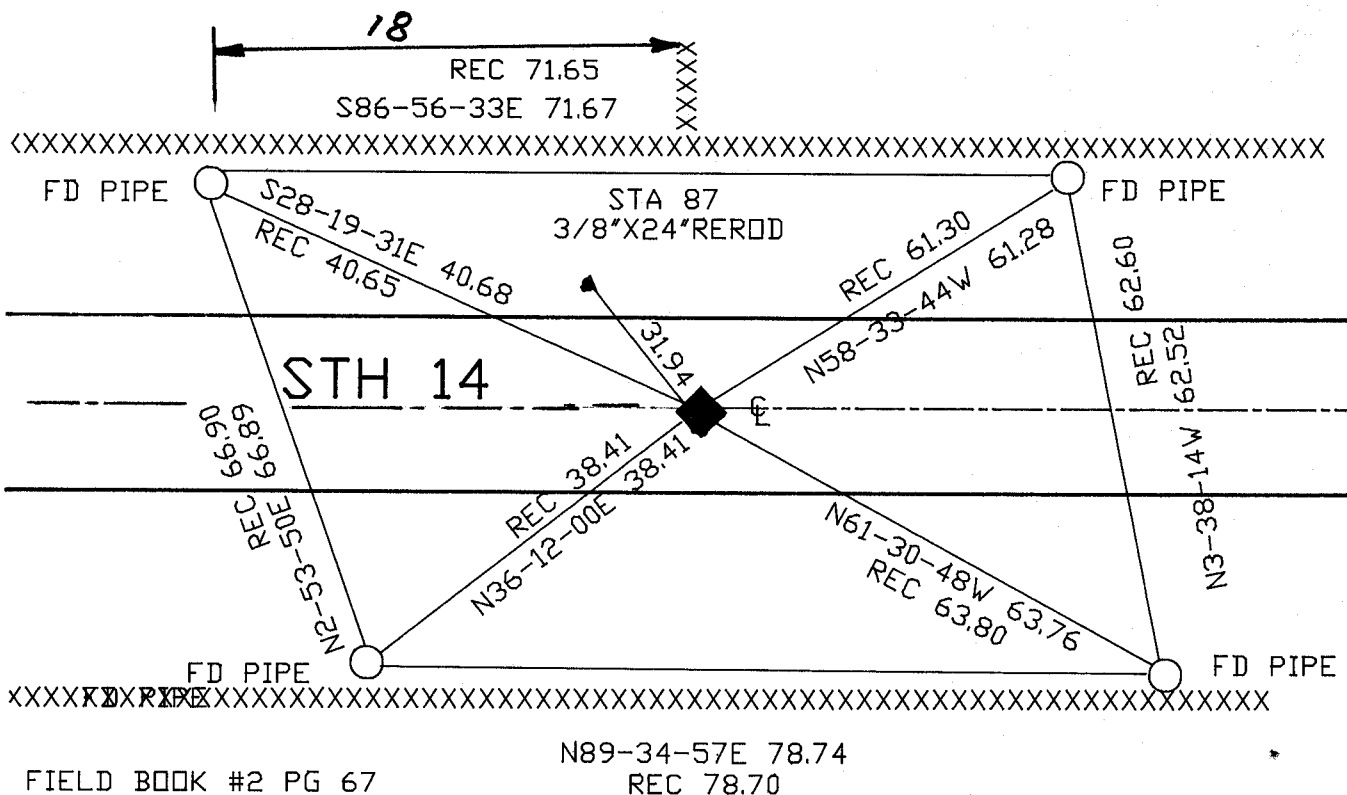
IF AVAILABLE
STATE PLANE COORDINATES

North (Y) 267,503.00 Elev. (Z) _____
 East (X) 2,246,649.25 Zone _____
 Hor. Datum _____ Vert. Datum _____
 HURD 267,502.68
2,246,649.08

◆ CORNER MONUMENT

○ WITNESS MONUMENT

BEARINGS ARE BASED ON: ASSUMED



FIELD BOOK #2 PG 67

N89-34-57E 78.74
REC 78.70

MICROFILMED

SHEET 1 OF 1

CORNER CODE: 511(1)

(B) Describe any record evidence, monument evidence, occupational evidence, testimonial evidence or any other material evidence you considered, and whether the monument was found or placed.

1986 BARNES J11 FOUND 1" PIPE IN MONUMENT BOX. REPLACED PIPE WITH POLY MONUMENT.

DOT PROJECT ENGINEER STATED THAT ROAD CONSTRUCTION CONTRACTOR STARTED MILLING PRIOR TO DOT CREW REFERENCING THE CORNER. FOUND MONUMENT BOX LAYING IN SOUTH DITCH. DID NOT SEARCH FOR REMAINS OF POLY MONUMENT. FORWARDED 1986 REFERENCE MAP TO DOT PROJECT ENGINEER.

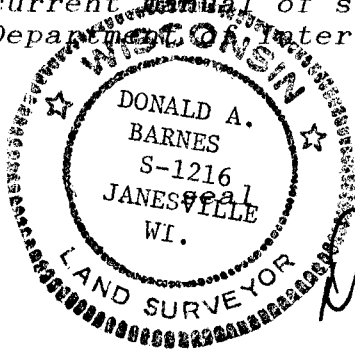
C) Was the corner restored through acceptance of (1) an obliterated evidence location, or, (2) a found perpetuated location?

ACCEPTED OBLITERATED EVIDENCE LOCATION.

D) Describe any material discrepancy between the location of the corner as restored or reestablished and the location of that corner as previously restored or reestablished by distance and direction. Show the discrepancy on the plan view drawing under (a), above. Show the distances between the corner as previously restored or reestablished and (1) the corner as restored or reestablished, and (2) to at least 4 of the witness monuments shown on the drawing in (a), above.

(E) Was the corner reestablished through lost corner proportionate methods? If so, show the method, including the directions and distances to other public land survey corners used as evidence or used for proportioning the corner location.

I, Donald Barnes, hereby certify that the corner points as identified by the corner code index were, in a field survey on, JULY 15, 1991, established, re-established, monumented, re-monumented, recovered or restored as expressed below and in conformance with the regulations and rules as required in the current manual of survey instructions of the United States Department of Interior, Bureau of Land Management.



COUNTY SURVEYOR FILING DATA

Date of computer entry _____

Date microfilmed _____

Number of included sheets _____
CORNER CODE

AFFIX YOUR LAND SURVEYOR SEAL

J11 (1)