

U.S. PUBLIC LAND SURVEY MONUMENT RECORD

For Public Land Survey Corners in the
T. 3N., R. 12E

JANESVILLE TWP
ROCK COUNTY WI

CORNER CODE INDEX

A	1	2	3	4	5	6	7	8	9	10	11	12	13	14	15	16	17	18	19	20	21	22	23	24	25	26	27	28	29	30	31	32	33	34	35	36				
B																																								
C																																								
D																																								
E																																								
F																																								
G																																								
H																																								
I																																								
J																																								
K																																								
L																																								
M																																								
N																																								
O																																								
P																																								
Q																																								
R																																								
S																																								
T																																								
U																																								
V																																								
W																																								
X																																								
Y																																								
Z																																								

IF AVAILABLE
ROCK COUNTY COORDINATES PREFERRED


North _____ Elev. _____


East _____


Hor. Datum _____ Vert. Datum _____

GPS (X) _____ TRAVERSE (X) _____

BASED ON THE FOLLOWING CONTROL:

PLACE MONUMENT SYMBOL  AT PROPER LOCATION ON ABOVE INDEX

 CORNER MONUMENT

 WITNESS MONUMENT

(a)

BEARINGS ARE BASED ON: _____

FIELD BOOK _____ PAGE # _____

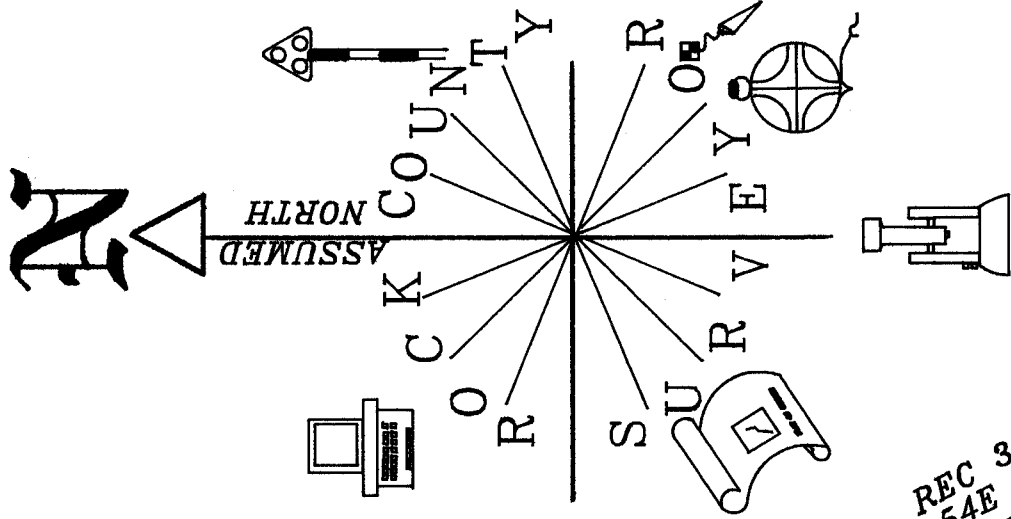
SHOW A PLAN VIEW DRAWING DEPICTING THE CORNER MONUMENT AND SURROUNDING PHYSICAL FEATURES, INCLUDING THE EXCAVATION AREA AND DEPTH. THE CORNER MONUMENT SHALL HAVE THE FOLLOWING CHARACTERISTICS: 1) HAVE A LEAST TWO PREDETERMINED BREAK-OFF POINTS. 2) IF BROKEN, LEAVE A PERMANENTLY MAGNETIZED REMNANT AT THE ORIGINAL POINT. 3) MUST BE EXTENDABLE. 4) THE CAP IS INSCRIBED "ROCK COUNTY SURVEY MONUMENT - PENALTY FOR DISTURBING MARKER" 5) OR AN EXISTING CUT LIMESTONE. AN IRON PIPE 1 1/2" 4' MINIMUM MAY BE USED IN AREAS WHERE GROUND WATER IS WITHIN ONE FOOT OF THE SURFACE. IF THE CORNER IS OCCUPIED BY AN IMPROVEMENT (HOLE, BURIED CABLE, ETC) AN DURABLE, DISTINCT MONUMENT MAY BE USED. CORNERS SHALL BE REFERENCED WITH AT LEAST 4 DURABLE WITNESS MONUMENTS. WITNESS MONUMENTS SHALL BE MADE OF CONCRETE, NATURAL STONE, IRON OR OTHER EQUALLY DURABLE MATERIAL EXCEPT WOOD. DESCRIBE THE CORNER AND THE WITNESS MONUMENTS

PLANNING & ZONING COMMITTEE ADOPTED THE ABOVE FORM ON 12/2/1982
WI ADMINISTRATIVE CODE A-E 7.08 REQUIREMENT

SHEET 18 OF 2

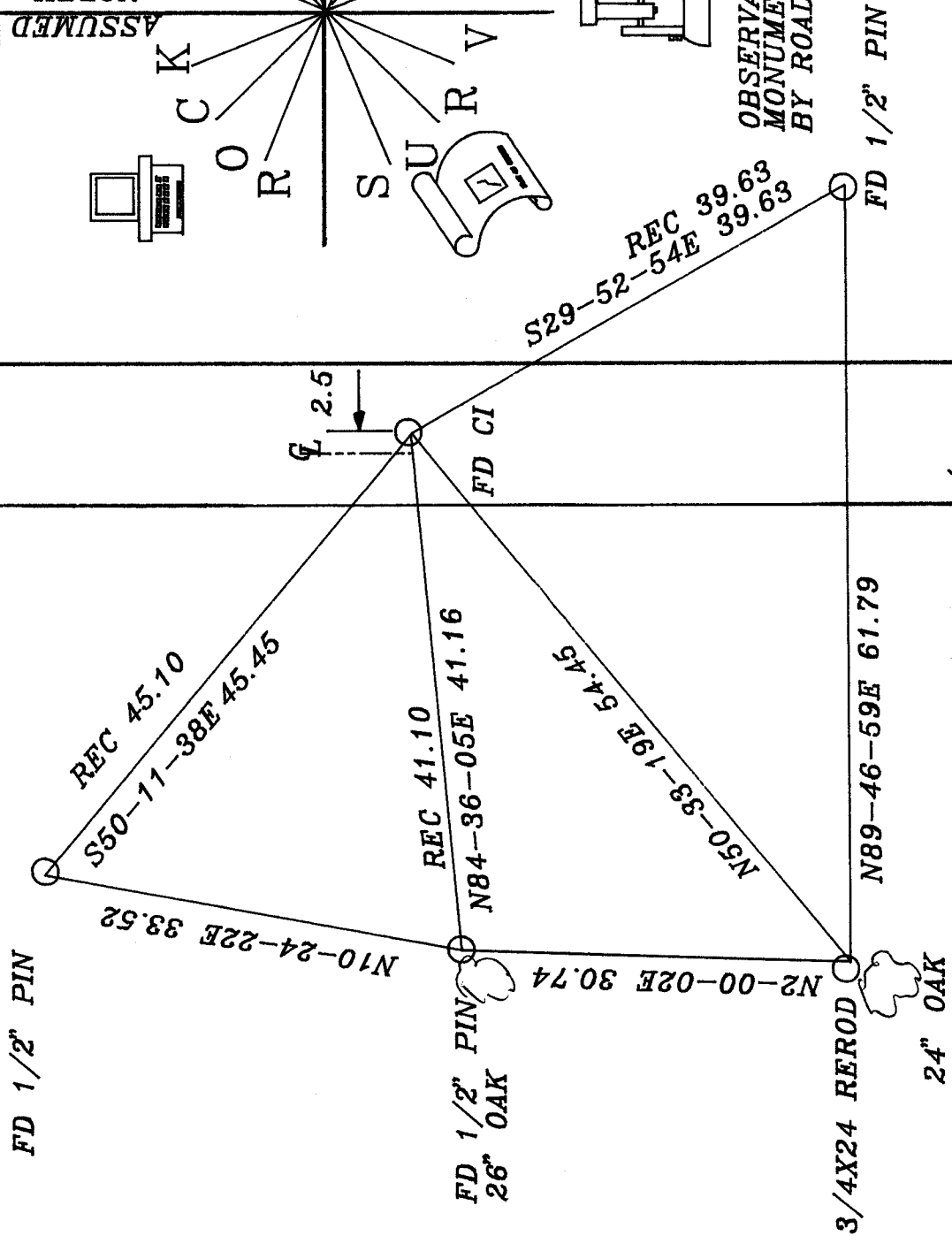
CORNER CODE

610



OBSERVATION SHEET JA 534
 MONUMENT WILL BE DISTURBED
 BY ROAD CONSTRUCTION.

STH
 184



W 1/4
 COR SEC 7

Donald Barnes
 8-30-95

G1(1)

(B) Describe any record evidence, monument evidence, occupational evidence, testimonial evidence or any other material evidence you considered, and whether the monument was found or placed.
FOUND MONUMENT AS SHOWN IN DRAWING.

C) Was the corner restored through acceptance of (1) an obliterated evidence location, or, (2) a found perpetuated location?
THE MONUMENT WILL BE DISTURBED BY ROAD CONSTRUCTION. CORNER PERPETUATED AS FOUND.

D) Describe any material discrepancy between the location of the corner as restored or reestablished and the location of that corner as previously restored or reestablished by distance and direction. Show the discrepancy on the plan view drawing under (a), above. Show the distances between the corner as previously restored or reestablished and (1) the corner as restored or reestablished, and (2) to at least 4 of the witness monuments shown on the drawing in (a), above.

(E) Was the corner reestablished through lost corner proportionate methods? If so, show the method, including the directions and distances to other public land survey corners used as evidence or used for proportioning the corner location.
NO

I, Donald Barnes, hereby certify that the corner points as identified by the corner code index were, in a field survey on, JULY 31, 1995, established, re-established, monumented, re-monumented, recovered or restored as expressed below and in conformance with the regulations and rules as required in the current manual of survey instructions of the United States Department of Interior, Bureau of Land Management.

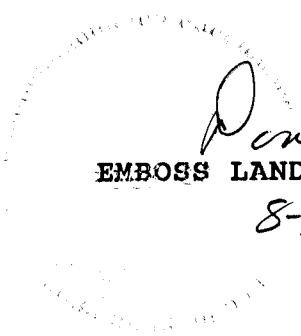
seal

COUNTY SURVEYOR FILING DATA

Date of computer entry _____

Date microfilmed _____

Number of included sheets _____
CORNER CODE


EMBOSS LAND SURVEYOR SEAL

A-E 7.08 REQUIREMENT

8-30-95

G1(1)