

U.S. PUBLIC LAND SURVEY MONUMENT RECORD

For Public Land Survey Corners In:
T. 3 N. R. 12 E. 4th P.M.
CORNER CODE INDEX

WI ADMINISTRATIVE CODE A-E 7.08 REQUIREMENT
REV 10/23/2004 USMONREC.DWG

JANESVILLE TWP
ROCK COUNTY WI

IF AVAILABLE
ROCK COUNTY COORDINATES PREFERRED

A	1	2	3	4	5	6	7	8	9	10	11	12	13	14	15	16	17	18	19	20	21	22	23	24	25	A
B		6				5				4				3			2				1					B
C																										C
D																										D
E																										E
F																										F
G																										G
H																										H
J																										J
K																										K
L																										L
M																										M
N																										N
O																										O
P																										P
Q																										Q
R																										R
S																										S
T																										T
U																										U
V																										V
W																										W
X																										X
Y																										Y
Z																										Z

North _____ Elev. _____

East _____

Hor. Datum _____ Vert. Datum _____

LATITUDE _____ ELLIPS. HT. _____

LONGITUDE _____

NAD83(91) _____ NETWORK ADJ. YR _____

GPS (X) _____ TRAVERSE (X) _____

BASED ON THE FOLLOWING CONTROL:

PLACE MONUMENT SYMBOL AT PROPER LOCATION ON ABOVE INDEX

CORNER MONUMENT

WITNESS MONUMENT

BEARINGS ARE BASED ON: _____

FIELD BOOK _____ PAGE # _____

SHEET 1 OF 3

SHOW A PLAN VIEW DRAWING DEPICTING THE CORNER MONUMENT AND SURROUNDING PHYSICAL FEATURES, INCLUDING THE EXCAVATION AREA AND DEPTH.

PLANNING & ZONING COMMITTEE ADOPTED THIS FORM ON 12/2/1982

CORNER CODE A-13 (1)

JA507

(B) Describe any record evidence, monument evidence, occupational evidence, testimonial evidence or any other material evidence you considered, and whether the monument was found or placed.

1835 (JAN7) MULLETT & BRINK WEST SOUTH SIDE OF SECTION 33
T4N 12E

198' ENTER PRAIRIE
2640 SET 1/4 SECTION POST IN PRAIRIE B. OAK 12 S89
3/4W 1104.84' NO OTHER
5280 SET POST COR SECTIONS 32 & 33 IN PRAIRIE BUR
OAK 16 N89W 747.78' LAND GENTLY ROLLING 1ST
RATE PRAIRIE

1835 (JAN7) MULLETT & BRINK WEST ON SOUTH SIDE OF SECTION
34

2640 SET 1/4 SECTION POST BUR OAK 12 N35W 69.3' BUR
OAK 14 N34E 23.1'
4436.52 BUR OAK 10
5280 SET POST COR SECTIONS 33 & 34 B. OAK 7 N56W
23.76' B. OAK 16 N46E 44.22' LAND GENTLY
ROLLING 2ND RATE W. B. & BUR OAK

1836 (AUG) BURNHAM NORTH BETWEEN SECTIONS 33 & 34

1225.62 YELLOW OAK 18 IN DI
2640 SET 1/4 SEC POST BUR OAK 24 S30W 25.74' BUR
OAK 10 N6? 1/2E 16.5'
NO STATIONS
5280 SET POST COR TO 27,28,33,&34 BUR OAK 12 S31
1/2W 39.6' BUR OAK 12 N3W 11.88' FIRST RATE
BUR OAK OPENINGS

1836 (MAR) O. LYON NORTH BETWEEN SECTIONS 3 & 4 T3N R12E

2640 SET QUARTER SECTION POST COR SOUTH SIDE OF
PRAIRIE BEARINGS {BUR OAK 7 N42E 59.4' BUR
OAK 10 S26E 129.36'
4620 LEFT PRAIRIE
5448.3 INTERSECTED NORTH BOUNDARY AT POST
BUR OAK 14 S55E 50.16 BUR OAK 9 S54W 78.54'
LAND ROLLING & FIRST RATE FIRST HALF TIMBERED
WITH BUR & BLACK OAK LAST HALF PRAIRIE &
SMOOTH GRASS.

1870 RUGER VOL 2 PG 27 FD STUMP OF EAST BEARING TREE &
REMAINS OF STUMP OF WEST BEARING TREE & REMAINS OF
OLD STAKE SET HARD HEAD STONE 34 X 14 X 1 1/2
SURROUNDED IT WITH 4 HARD HEAD STONES.

1876 RUGER VOL 2 PG 207 @ NE COR SEC 4 CALL FOR & STATES
SEE PAGE 20, 2810.12 FROM NE COR SEC 4 TO E 1/4 COR SEC
4, VAR 6-40 2646.27 FROM NE COR SEC 4 TO N 1/4 COR SEC
4. E 1/4 COR SEC 4 DECLARED LOST & SET FROM SE & NE
CORNERS SEC 4.

1877 RUGER VOL 2 PG 229 COR EST. BY SELF SEE SEC 33 PG 20

1878 RUGER VOL 2 PG 240 CALLS FOR COR. SEE SECTIONS 33-34 &
35 FULTON TWP PAGES 20,143, & 144 VAR 7-24 2596.77
FROM N 1/4 COR TO NW CORNERS SEC 3 JANESVILLE TWP.

1976 NORTHROP #2221 @ NE COR SEC 4 FD 1 1/4" X 14" STONE AT
FENCE CORNER. 2816.94 TO E 1/4 COR SEC 4

1976 NORTHROP #6653 LETTER. FD A BLACK STONE 14" X 1 1/2"
STANDING ON END WITH PART OF SAME BROKEN OFF WITH A
STONE ON THE NE & SW SIDES THEREOF AGREEING WITH
RUGER'S DESCRIPTION GIVEN OF THIS CORNER IN PG 20 VOL
2, ORIGINAL RECORDS. I SET A 1" I.D. PIPE 30.00 SOUTH ON
MY TRAVERSE POINT WHICH CAN BE USED AS ONE TIE. THIS
TO NE IS AT A 2 WAY FENCE CORNER.

1976 BARNES VOL 5 PG 168 FD STONE (14X1 1/2") STANDING ON
END (WITH PART OF SAME BROKEN OFF) WITH A STONE ON
THE NE & SW SIDE. AGREES WITH RECORD-RUGER PG 20 * PG
161 VOL 2 OF ORIGINAL RECORDS. REF. SAME. @ FENCE INT.

SHEET 1 OF 3

CORNER CODE **Z-13**

A

Donald Barnes
11/09/07

FU627

- 1978 NORTHROP CSM VOL 8 PG 14 STONE OF REC FROM RUGER'S SURVEY. BEARINGS ARE REFERENCED TO TRUE NORTH BY SOLAR OBSERVATIONS MADE ON JUNE 21, 1978. N00-06-41W 2648.25 TO W 1/4 COR SEC 34, N89-37-52E 1302.11 TO 1/16TH COR A FOUND IRON STAKE FROM A B.J. SUNNY SURVEY MADE IN 1958, & N89-48-37E 1301.21 FROM THAT 1/16TH COR TO THE S 1/4 COR SEC 34
- 1978 NORTHROP VOL 5 PG 443 FD STONE 2603.30 TO S 1/4 COR SEC 34, 2648.25 TO W 1/4 COR SEC 34.
- 1981 AERO-METRIC PHOTO CONTROL NGVD 29 ELEVATION 888.21' AT NE COR SEC 4 T3N R12E
- 1985 BARNES VOL 6 PG 344 SHOWS RECORD DISTANCES.
- 1987 BARNES A-13 FD STONE OF RECORD & REFERENCE TIES. PLACED CARSONITE POST. 278,351.69; 2,249,075.48 ELEV. 886.7
- 1999 COMBS "SHESKEY'S SUBDIVISION" BK 32 PG 460 NE COR SEC 4 6X6 HH, 2816.55' TO E 1/4 COR SEC 4 NE COR SEC 4 & SE COR SEC 33 ARE THE SAME.
- 1999 COMBS CSM VOL 22 PG 226 HH 2816.55 TO E 1/4 COR SEC 4
- 2002 COMBS CSM VOL 25 PG 451 CUT STONE @ NE COR SEC 4 2648.56 TO ALUM. @ N 1/4 COR SEC 4

FD HH OF RECORD & WHITE PLASTIC POST. FD REFERENCE MONUMENTS. ONLY EAST ONE WAS NOT DISTURBED.

C) Was the corner restored through acceptance of (1) an obliterated evidence location, or, (2) a found perpetuated location?

ACCEPTED FD HH. WITH WHITE PLASTIC POST

D) Describe any material discrepancy between the location of the corner as restored or reestablished and the location of that corner as previously restored or reestablished by distance and direction. Show the discrepancy on the plan view drawing under (a), above. Show the distances between the corner as previously restored or reestablished and (1) the corner as restored or reestablished, and (2) to at least 4 of the witness monuments shown on the drawing in (a), above.

(E) Was the corner reestablished through lost corner proportionate methods? If so, show the method, including the directions and distances to other public land survey corners used as evidence or used for proportioning the corner location.

I, **Donald Barnes**, hereby certify that the corner location as identified by the corner code index was determined by me under my direction and control and that this U.S. Public Land Survey Monument Record is correct and complete to the best of my knowledge and belief.

Seal

Donald Barnes
Emboss

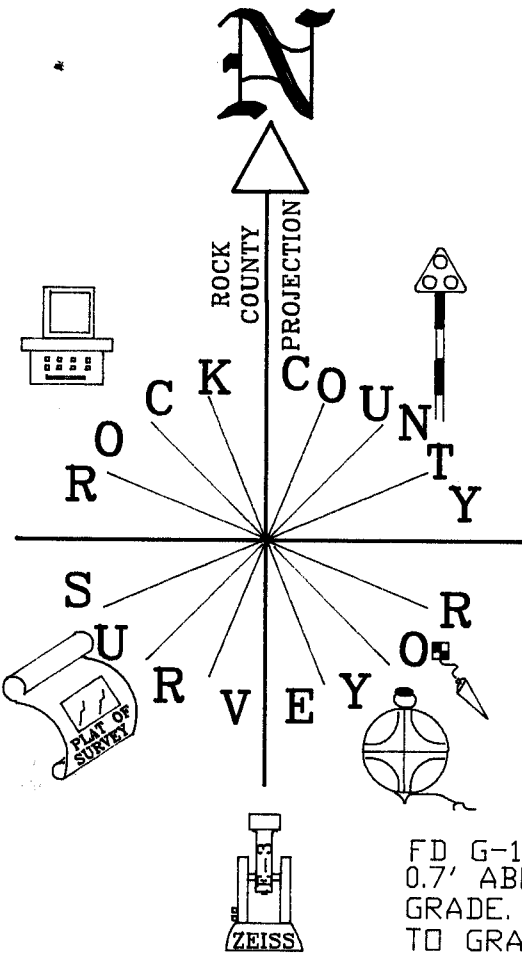
SHEET 2 OF 3

1/09/07

CORNER CODE **A-13**

A.E. 7.08 REQUIREMENT

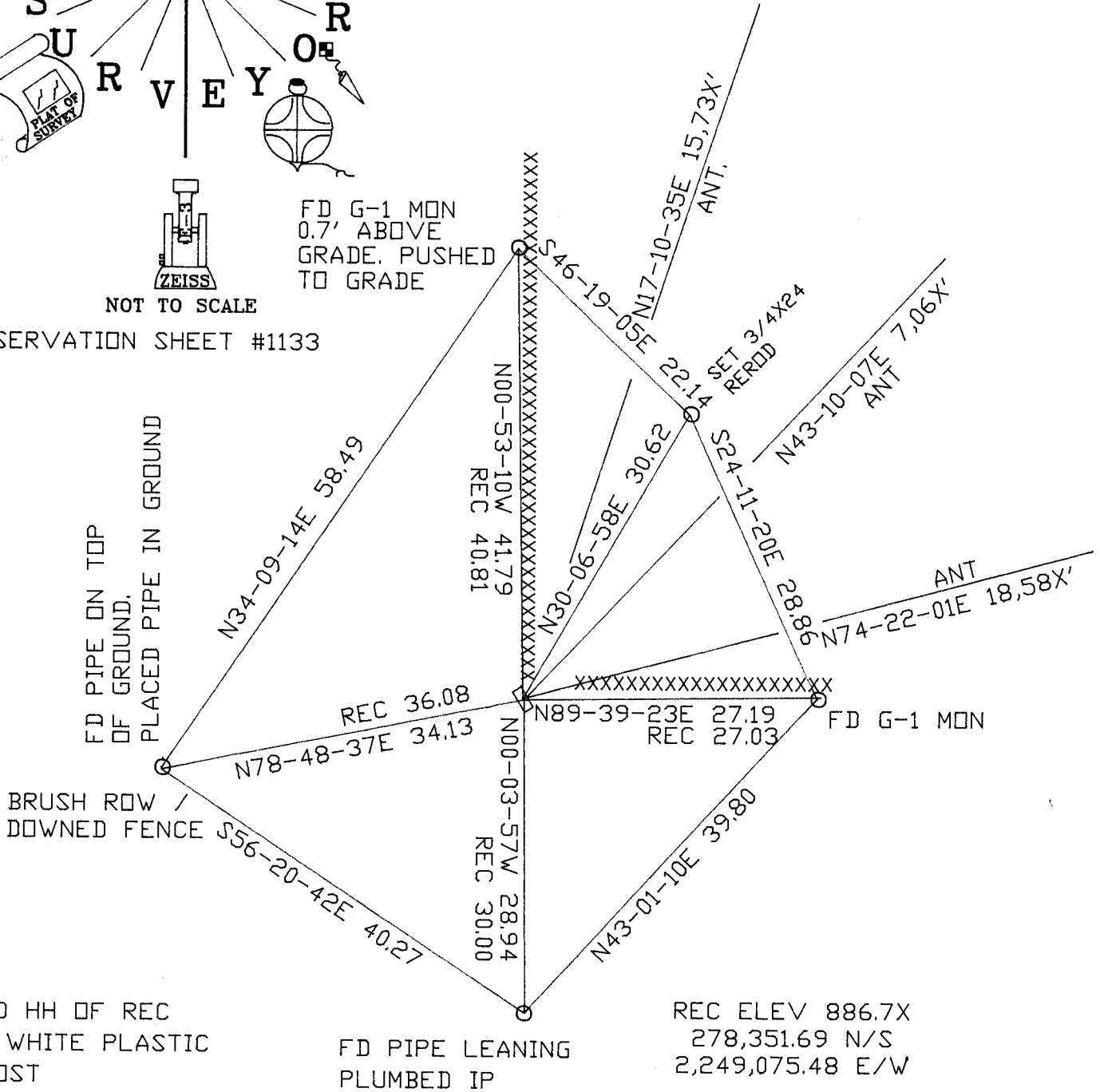
NE COR
SEC 4
JANESVILLE TWP
T3N R12E



FD G-1 MON
0.7' ABOVE
GRADE. PUSHED
TO GRADE

NOT TO SCALE

OBSERVATION SHEET #1133



FD HH OF REC
& WHITE PLASTIC
POST

FD PIPE LEANING
PLUMBED IP

REC ELEV 886.7X
278,351.69 N/S
2,249,075.48 E/W

EMBOSSED SEAL

Donald Barnes
1/09/07

XXXXXXXXXXXXXXXXXX

SHEET 3 OF 3

A-13