

U.S. PUBLIC LAND SURVEY MONUMENT RECORD

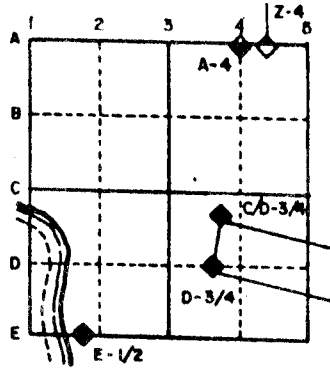
For Public Land Survey Corners in the
T. 3 N., R. 12 E.

CORNER CODE INDEX

	1	2	3	4	5	6	7	8	9	10	11	12	13	14	15	16	17	18	19	20	21	22	23	24	25
A																									
B																									
C	6																								
D		5																							
E			4																						
F				3																					
G					2																				
H																									
I																									
J																									
K																									
L																									
M																									
N																									
O																									
P																									
Q																									
R																									
S																									
T																									
U																									
V																									
W																									
X																									
Y																									
Z																									

PLACE MONUMENT SYMBOL (◆) AT PROPER LOCATION ON ABOVE INDEX

EXAMPLE



JANESVILLE TWP
ROCK COUNTY WI

IF AVAILABLE STATE PLANE COORDINATES

North (Y) _____ Eleve. (Z) _____
East (X) _____ Zone _____
Hor. Datum _____ Vert. Datum _____

(a.)

◆ CORNER MONUMENT

○ WITNESS MONUMENT



FIELD BOOK _____ PAGE # _____

SHOW A PLAN VIEW DRAWING DEPICTING THE CORNER MONUMENT AND SURROUNDING PHYSICAL FEATURES, INCLUDING THE EXCAVATION AREA AND DEPTH. THE CORNER MONUMENT SHALL HAVE THE FOLLOWING CHARACTERISTICS: 1) HAVE AT LEAST TWO PREDETERMINED BREAK-OFF POINTS. 2) IF BROKEN, LEAVE A PERMANENTLY MAGNETIZED REMNANT AT THE ORIGINAL POINT. 3) MUST BE EXTENDABLE. 4) THE CAP IS INSCRIBED: ROCK COUNTY SURVEY MONUMENT - PENALTY FOR DISTURBING MARKER. 5) OR AN EXISTING CUT LIMESTONE. AN IRON PIPE 1 1/2" x 4'0" (MINIMUM) MAY BE USED IN AREAS WHERE GROUND WATER IS WITHIN ONE FOOT OF THE SURFACE. IF THE CORNER IS OCCUPIED BY AN IMPROVEMENT (MANHOLE, BURIED CABLE, ETC.) ANY DURABLE, DISTINCT MONUMENT MAY BE USED. CORNERS SHALL BE REFERENCED WITH AT LEAST 4 DURABLE WITNESS MONUMENTS. WITNESS MONUMENTS SHALL BE MADE OF CONCRETE, NATURAL STONE, IRON OR OTHER EQUALLY DURABLE MATERIAL, EXCEPT WOOD. DESCRIBE THE CORNER AND THE WITNESS MONUMENTS.

MICROFILMED

CORNER CODE:
23 (3)

- (B) Describe any record evidence, monument evidence, occupational evidence, testimonial evidence or any other material evidence you considered, and whether the monument was found or placed.
- 1859 RUGER VOL 1 PG 110 SURROUNDED POST WITH 2 HH & 1 LIMESTONE AND TOOK WITNESS TREES. BURR OAK 16 S58-37W 227; BURR OAK 10 S42E 150' VAR 7-35. CALLS FOR 2670.36 TO SE CORNER AND 2670.36 CENTER OF SECTION 31.
 - 1870 RUGER VOL 2 PG 43 FOUND CORNER ESTABLISHED BY SELF. 14.36' WEST OF N 1/4 CORNER SECTION 6. CALLS FOR 2629.04 VAR 6-423 FROM N 1/4 CORNER TO NW CORNER OF SECTION 6 AND 2652.28 VAR 6-45 FROM THE N 1/4 CORNER TO THE NE CORNER OF SECTION 6.
 - 1933 SUNNY VOL 3 PG 234 CALLS STATES THE CORNER IS 14.35' WEST OF THE N 1/4 CORNER OF SECTION 6. CALLS FOR 1" X 36" LONG PIPE IN CONCRETE PAVEMENT. 3.8' NORTH OF CENTER OF PAVEMENT. CALLS FOR 2615.1 TO SW CORNER OF SECTION 31 AND 5340.1 FROM THE N 1/4 CORNER OF SECTION 6 TO THE S 1/4 CORNER OF SECTION 6.
 - 1970 BATTERMAN JR. VOL 4 PG 432 FOUND 3/4" IRON PIN AND A 1" PIPE AT THE N 1/4 CORNER OF SECTION 6. 14.35' BETWEEN MONUMENTS. REFERENCED SAME.
 - 1988 BARNES VOL 6 PG 378 CALLS FOR 2619.46 N89-37-32E TO SW CORNER OF SECTION 31, 2673.54 N89-33-33E TO SE CORNER OF SECTION 31 AND 2669.08 N2-33-19W TO INTERSECTION OF SECTION 1/4 LINES.
 - 1992 BARNES Z-3(2) FOUND 1" PIPE AND REFERENCED SAME.

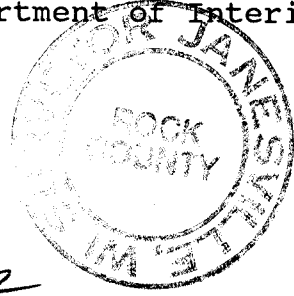
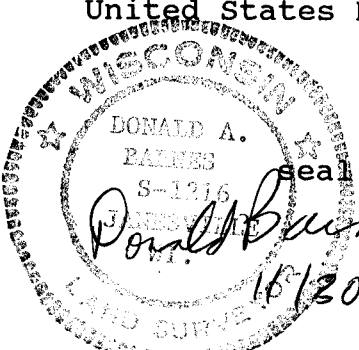
FOUND DOT DISK.

C) Was the corner restored through acceptance of (1) an obliterated evidence location, or, (2) a found perpetuated location?
ACCEPTED FOUND DISK.

D) Describe any material discrepancy between the location of the corner as restored or reestablished and the location of that corner as previously restored or reestablished by distance and direction. Show the discrepancy on the plan view drawing under (a), above. Show the distances between the corner as previously restored or reestablished and (1) the corner as restored or reestablished, and (2) to at least 4 of the witness monuments shown on the drawing in (a), above.

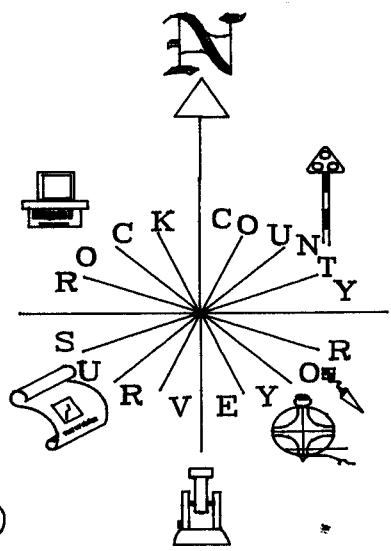
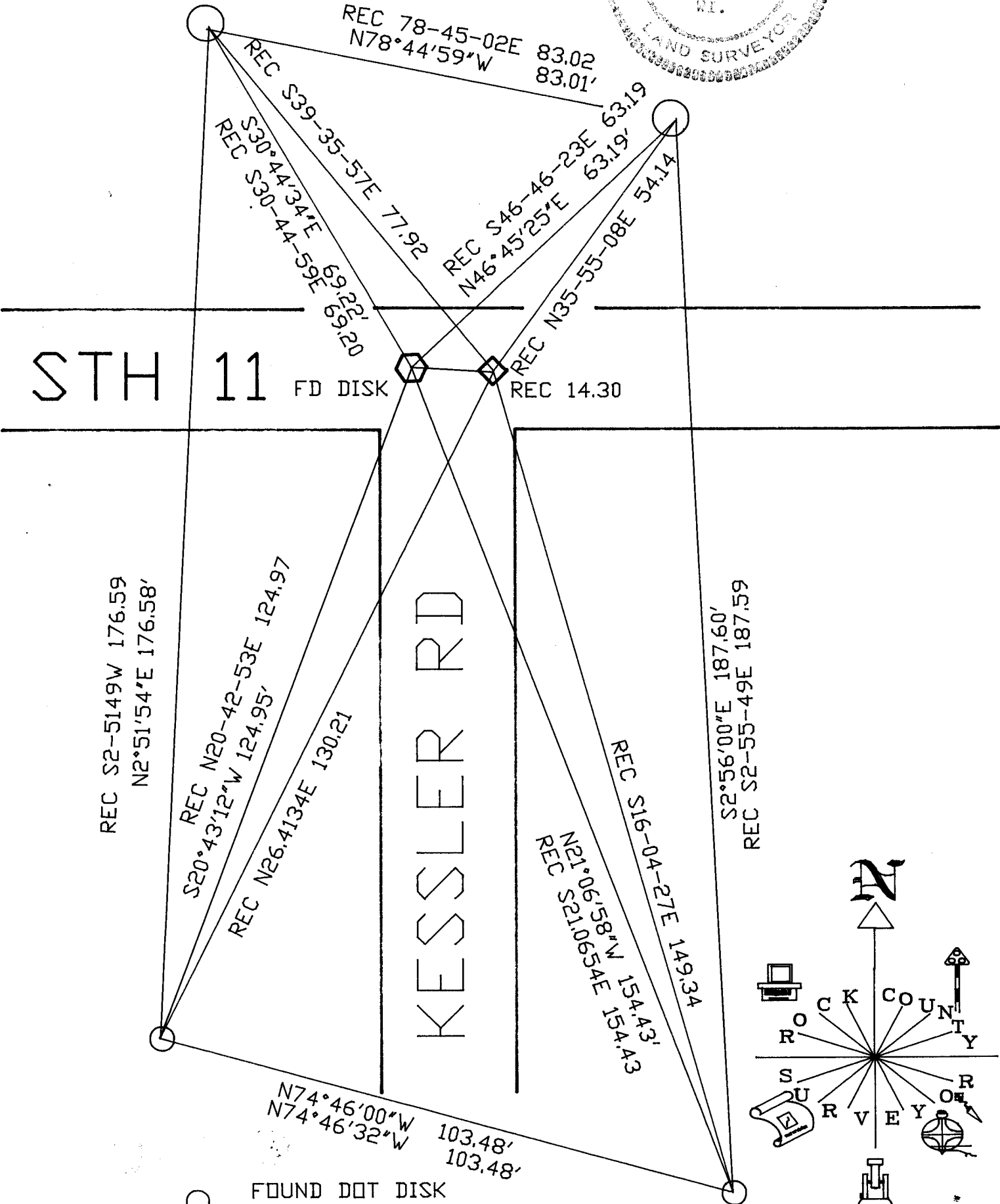
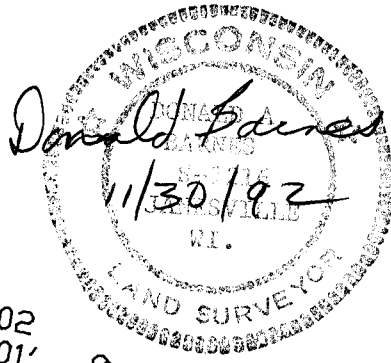
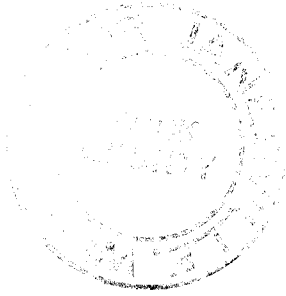
(E) Was the corner reestablished through lost corner proportionate methods? If so, show the method, including the directions and distances to other public land survey corners used as evidence or used for proportioning the corner location.

I, Donald Barnes, hereby certify that the corner points as identified by the corner code index were, in a field survey on, November 9, 1992, established, re-established, monumented, re-monumented, recovered or restored as expressed below and in conformance with the regulations and rules as required in the current manual of survey instructions of the United States Department of Interior, Bureau of Land Management.



COUNTY SURVEYOR FILING DATA
 Date of computer entry _____
 Date microfilmed _____
 Number of included sheets _____
 CORNER CODE

AFFIX YOUR LAND SURVEYOR SEAL



- FOUND DOT DISK IN CONCRETE
 - ◇ N 1/4 COR SEC 6
 - ⬡ S 1/4 COR SEC 31 FD DISK
- OBSERVATION SHEETS