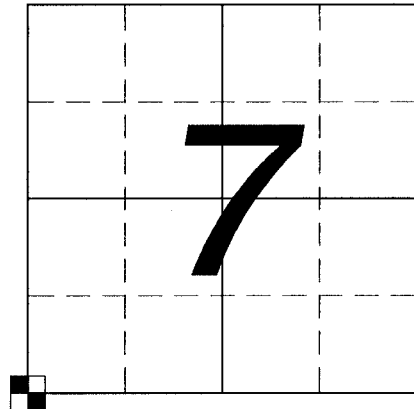


U.S. PUBLIC LAND SURVEY MONUMENT RECORD

Note: This form is intended and designed to fulfill all requirements of Wisconsin Administrative Code, Chapter A-E 7.08, U.S. Public Land Survey Monument Record (3) (a) (b) (c) (d) (e) (f) (g) (h) (i). "An additional sheet may be added if necessary to conform with said requirements."

(a) Corner location: Township 03 North
 Range 13 East
 Town/City/Village HARMONY
ROCK County



Wisconsin County Coordinate System, Dane Zone Coordinates:

N: 286,302.07
 E: 495,875.72

(b) (f) (g) (h) Description of monument found at this corner and if it was accepted, state all evidence (material, testimonial, occupational, plats, records, other monuments) used as a basis for accepting. If not accepted or if nothing was found, state evidence used as basis for establishing location. If reestablished through lost corner proportionate methods, indicate all monuments, distances and directions used to establish.

SECTION CORNER IS MISSING. I FOUND A THREE OF FOUR TIES AS SHOWN ON A TIE SHEET BY DONALD BARNES, DATED AUGUST 2, 1994. THE NORTHEAST TIE HAS BEEN MOVED. I SET 1 NEW TIES AS SHOWN HEREON.

ROCK COUNTY SECTION CORNER REFERENCE NUMBER J-1.

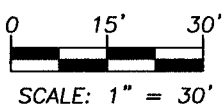
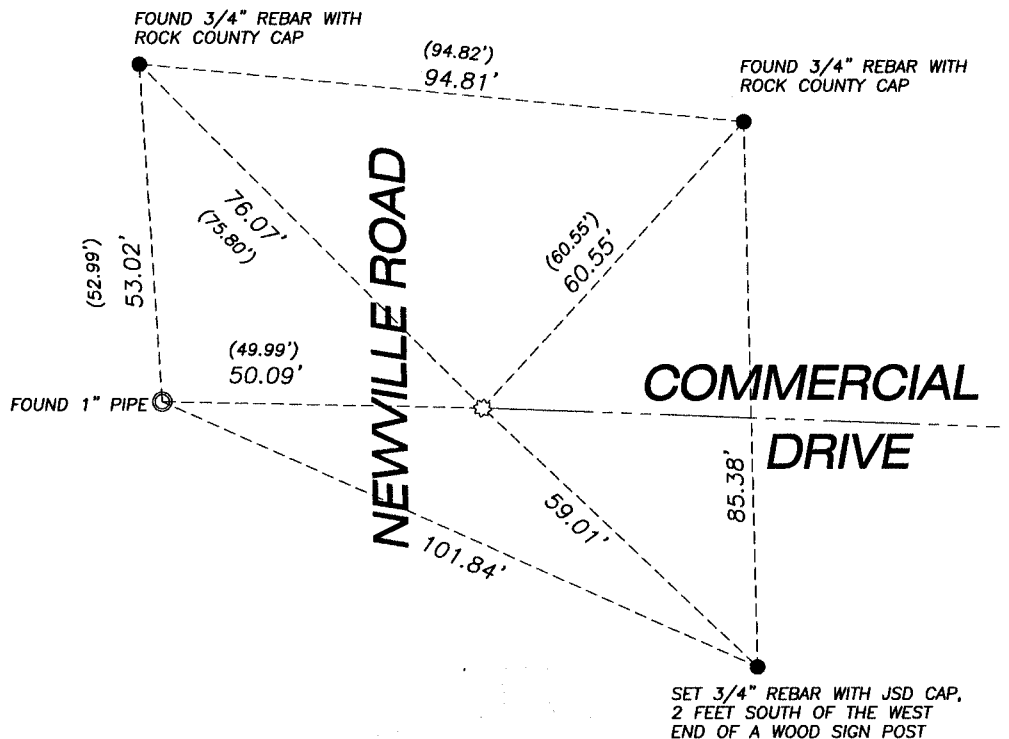
(c) (d) (e) Plan view of corner with ties to at least 4 witness monuments. If in disagreement with previously established corner, show the distances between the two corners and also indicate the ties to the disputed corner.

LEGEND

- GOVERNMENT CORNER
- COTTON SPINDLE SET
- SECTION LINE

NOTES

1. BEARINGS FOR THIS SURVEY AND MAP ARE BASED ON THE WISCONSIN COUNTY COORDINATE SYSTEM, (WCCS), ROCK COUNTY, THE SOUTH LINE OF THE SOUTHWEST QUARTER, BEARS S 87°48'26" E.
2. FIELD WORK PERFORMED BY JSD PROFESSIONAL SERVICES, INC. ON FEBRUARY 21, 2014.



(i) I, John Krebs, S-1878
 (type or print name) certify that the corner location on this record was determined by me or under my direction and control and that this U.S. Public Land Survey Monument Record is correct and complete to the best of my knowledge and belief.

Signature _____ Date _____

Sheet 1 of 1

J-001