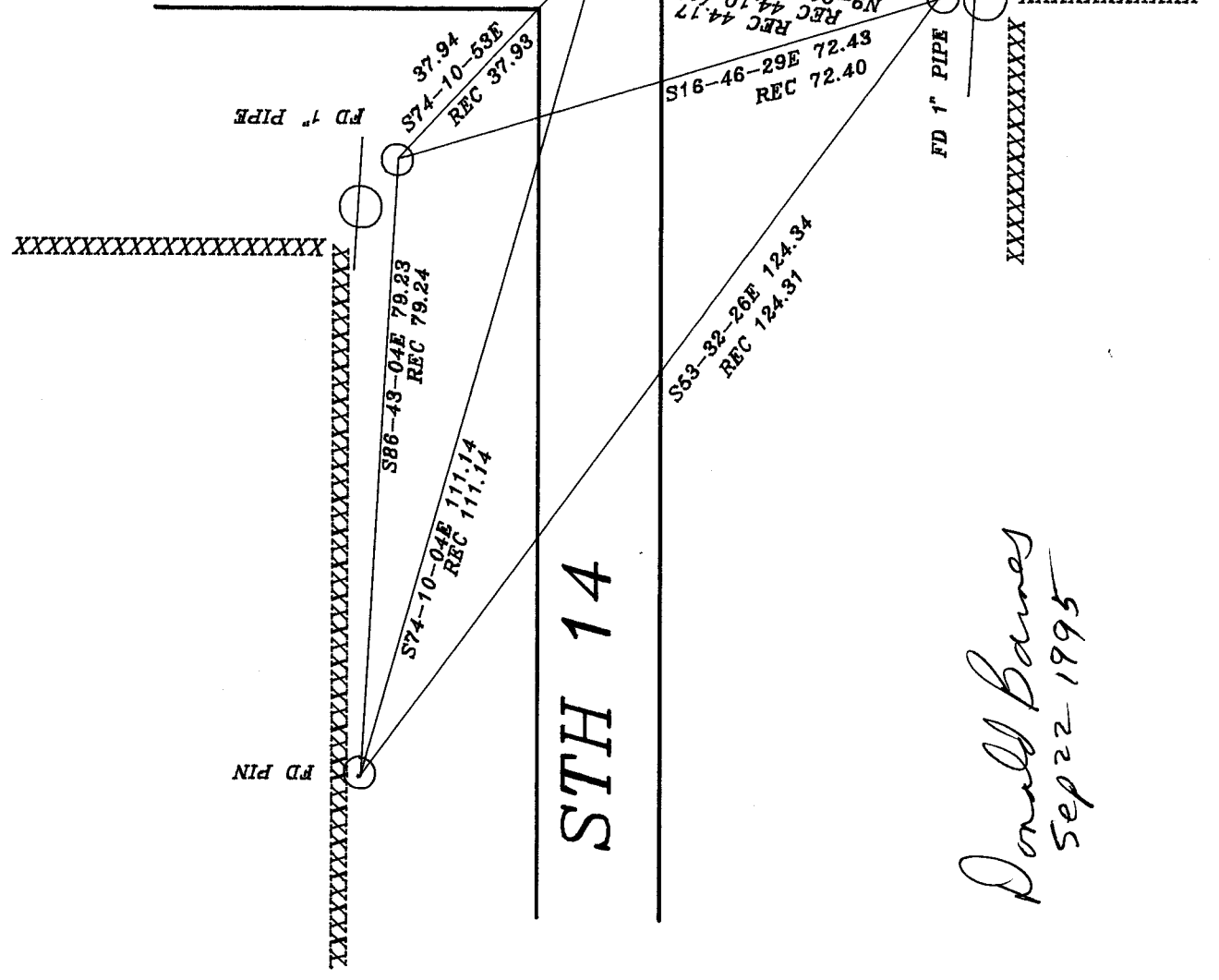


OBSERVATION SHEET 199 WPL
 ● FD DISK IN
 ROUND MONUMENT BOX
 DOT PLACED MONUMENT

SE COR
 SEC 7

GRAVEL
 DRIVE

CONNOR RD



Donald Barnes
 Sep 22 1995

(B) Describe any record evidence, monument evidence, occupational evidence, testimonial evidence or any other material evidence you considered, and whether the monument was found or placed.

Fd DOT DISK IN MON BOX as placed
by WIPOT

C) Was the corner restored through acceptance of (1) an obliterated evidence location, or, (2) a found perpetuated location?

D) Describe any material discrepancy between the location of the corner as restored or reestablished and the location of that corner a previously restored or reestablished by distance and direction. Show the discrepancy on the plan view drawing under (a), above. Show the distances between the corner as previously restored or reestablished and (1) the corner as restored or reestablished, and (2) to at least of the witness monuments shown on the drawing in (a), above.

(E) Was the corner reestablished through lost corner proportionate methods? If so, show the method, including the directions and distances to other public land survey corners used as evidence or use for proportioning the corner location.

I, *Donald Barnes*, hereby certify that the corner points as identified the corner code index were, in a field survey on, *1995*, established, re-established, monumented, re-monumented, recovered or restored as expressed below and in conformance with the regulations and rules as required in the current manual of survey instructions of the United States Department of Interior, Bureau of Land Management.

seal

Donald Barnes
Sep 22, 1995

EMBOSS LAND SURVEYOR SEAL

COUNTY SURVEYOR FILING DATA

Date of computer entry _____

Date microfilmed _____

Number of included sheets _____
CORNER CODE

55(1)