

U.S. PUBLIC LAND SURVEY MONUMENT RECORD

For Public Land Survey Corners In:
T. 3 N. R. 12 E. 4th P.M.
CORNER CODE INDEX

WI ADMINISTRATIVE CODE A-E 7.08 REQUIREMENT
REV 10/23/2004 USMONREC.DWG

TANESU, UE TWP
ROCK COUNTY WI

IF AVAILABLE
ROCK COUNTY COORDINATES PREFERRED

	1	2	3	4	5	6	7	8	9	10	11	12	13	14	15	16	17	18	19	20	21	22	23	24	25		
A																											A
B																											B
C																											C
D																											D
E																											E
F																											F
G																											G
H																											H
J																											J
K																											K
L																											L
M																											M
N																											N
O																											O
P																											P
Q																											Q
R																											R
S																											S
T																											T
U																											U
V																											V
W																											W
X																											X
Y																											Y
Z																											Z
	1	2	3	4	5	6	7	8	9	10	11	12	13	14	15	16	17	18	19	20	21	22	23	24	25		

PLACE MONUMENT SYMBOL AT PROPER LOCATION ON ABOVE INDEX

North _____ Elev. _____

East _____

Hor. Datum _____ Vert. Datum _____

LATITUDE _____ ELLIPS. HT. _____

LONGITUDE _____

NAD83(91) _____ NETWORK ADJ. YR _____

GPS (X) _____ TRAVERSE (X) _____

BASED ON THE FOLLOWING CONTROL:

CORNER MONUMENT

WITNESS MONUMENT

BEARINGS ARE BASED ON: _____

FIELD BOOK _____ PAGE # _____

SHEET 1 OF 5

SHOW A PLAN VIEW DRAWING DEPICTING THE CORNER MONUMENT AND SURROUNDING PHYSICAL FEATURES, INCLUDING THE EXCAVATION AREA AND DEPTH.

PLANNING & ZONING COMMITTEE ADOPTED THIS FORM ON 12/2/1982

CORNER CODE V-21(3)

JA611

(B) Describe any record evidence, monument evidence, occupational evidence, testimonial evidence or any other material evidence you considered, and whether the monument was found or placed.

1833 HARRISON ORIG SURVEY NORTH BET. SECS 35 & 36 DEC 14TH
VAR 8-40E

957 TRAIL CRS N.W.
1207.80 TRAIL CRS N OF W
2640.00 QUARTER SEC CORNER. BEARINGS {BURR OAK 12
N 48W 194.7' BUR OAK 14 S80E 283.8' BURR O
12 & BUR O 14} MARKED
3552.12 BUR O 15 IN DIAM.
4205.52 BURR O 12 IN DIAM.
5280 COR SECS 25,26,35,&36
BEARING & MARKED TREES {BURR O. 12 S65W
14.52', BURR O 10 N12W 77.88', BURR O 10 N52E
53.46', BURR O 10 S71E 27.06' LAND GENTLY
ROLLING 2ND RATE, TIMBER BURR & RED O.
UNDERGROWTH GRUBS, GRASS & WEEDS
EAST BETWEEN SEC 25 & 36 (VAR 7-50E)
765.60 INTERSECTED RIGHT BANK OF ROCK RIVER AND
ESTABLISHED A MEANDER POST ON A BURR O 18
INCHES IN DIAM. THE CURRENT OF RIVER IS
GENTLE LAND ?? SAME.
NORTH BETWEEN SECS 25 & 26 (VAR 8-40E)
280.5 BURR O 18
739.2 INT. RIGHT BANK OF ROCK RIVER AND SET A
MEANDERING POST. {W.O. 18 S65W 42.24' W.O. 20
S27E 97.68'
LAND ? SAME
CURRENT OF RIVER SMOOTH & GENTLE
EAST ON RAND. BET. 26 & 35 (VAR 7-50E)
1214.40 TRAIL CRS N.W.
2640 TEMPY 1/4 SEC COR
4570.5 LEAVE PRAIRIE & ENTER BURR O. TIMBER
5274.72 INT. E. BDY. 19.8' SOUTH OF POST. LAND 1ST 3/4
LEVEL 1ST RATE PRAIRIE REMAINDER LEVEL 2ND RATE
WITH BURR OAK TIMBER
WEST COR. WEST BET. SEC 26 & 35
709.5 BURR O. 10 IN ???
2637.36 QUARTER SEC COR. POST & RAISED MOUND
5274.72 INT. SEC LINE
1845 PEASE "SMITH & BAILEY'S ADD." BK 1 PG 9. SHOWS THE
CORNER ON THE EASTERLY RIGHT OF WAY LINE OF MADISON
ST AND 130.68 FROM THE JACKSON ST NORTH R/W LINE.
1845 JANESVILLE TWP RD RECORDS BK 1 PG 51 TOWN OF
JANESVILLE, ESTABLISHED THIS 24TH DAY OF MAY 1845 LAID
OUT AND ESTABLISHED A PUBLIC HIGHWAY IN SAID TOWN
FROM THE QUARTERSECTION POST ON THE NORTH SIDE OF
SEC 35 IN T3N R12E 2640' TO THE NORTHEAST CORNER OF
SEC 35, SAID ROAD IS 66' WIDE, AND NOW """" DECLARE THE
RD AS ABOVE DESCRIBED TO BE PUBLIC HIGHWAY """" OPENED
AS SUCH PURSUANT TO STATUTE. HARVEY GREEN & HARVEY
STORY} COMMISSIONERS OF HIGHWAYS FOR THE TOWN OF
JANESVILLE, FILED IN THE TOWN CLERK'S OFFICE MARCH
14TH, 1846.
1847 BINNEY BK 1 PG 7 "MITCHELLS ADDITION TO JANESVILLE"
MAGNETIC VARIATION IS 8 DEGREES EAST. EAST LINE OF
MADISON ST (66' WIDE) IS THE SECTION LINE. THE EASTERN
LINE OF LOT 33 WHICH IS THE TRIANGULAR PIECE 132' ALONG
JACKSON ST, THE NORTH LINE IS 87.78' ALONG MINERAL
POINT RD, & THE EAST LINE IS 97.68 ALONG N/S SEC LINE.
THE CENTER OF MINERAL POINT RD IS THE SECTION LINE & IS
N89-15W. THE CENTER OF JACKSON RD (66' WIDE) IS N41-
45W.

SHEET 1 OF 5
CORNER CODE V-21(3)

Donald Barnes
3/28/06

JA611

- 1851 MILLER "HIELD'S ADD" BK 2 PG 23, 24 SUBDIVISION COMMENCES AT A POINT ON THE NORTH SIDE OF MADISON STREET JACKSON ST 345.18 WEST OF THE SECTION CORNER.
- 1852 MILLER "COOLMAN'S SUB" BK 2 PG 31. SHOWS THE CORNER IN THE CENTER OF CROFT ST AND ON LINE WITH THE EASTERLY RIGHT OF WAY OF MADISON STREET AND 114.18 NORTH OF THE NE CORNER OF JACKSON AND MADISON. SHOWS THE CORNER AS 33 FROM THE SOUTH RIGHT OF WAY LINE OF CROFT ST (NOW MINERAL POINT ROAD).
- 1853 MILLER BK 2 PG 35 "CROFT'S ADD." SEC COR IS ON THE EAST LINE OF MADISON ST & CENTER OF CROFT ST. THOSE STREETS ARE PARALLEL TO THE SECTION LINES.
- 1858 RUGER "MITCHELL'S ADD" BK 1 PG 7 SHOWS THE CORNER ON THE EASTERLY RIGHT OF WAY LINE OF MADISON ST AND 130.68 FROM THE NE CORNER OF JACKSON AND MADISON.
- 1871 RUGER VOL 2 PG 62 CALLS FOR A LIMESTONE
- 1879 RUGER "ECHLIN'S ADD" BK 4 PG 9. STATES THAT SE CORNER OF THE SUBDIVISION IS 66 WEST AND 33 NORTH OF THE SW CORNER OF SECTION 25. ALSO SHOWS THE NORTH RIGHT OF WAY FOR MINERAL POINT AS 33' FROM THE SECTION LINE.
- 1991 BARNES VOL 6 PG 420 RESTORED CORNER BY USING FOUND SUBSIVISION MONUMENTS. S88-28-41W 2658.21 TO S 1/4 COR SEC 26 AND S89-21-09E 2664.94 TO S 1/4 COR SEC 25
- 1991 BARNES V-21 ESTABLISHED CORNER BY INTERSECTING THE CENTER OF MINERAL POINT RIGHT OF WAY AND THE EASTERLY RIGHT OF WAY OF MADISON STREET. THIS IS IN HARMONY WITH THE NE INTERSECTION OF JACKSON AND MINERAL POINT. PLACED A G-1 MONUMENT WITH MAGNET & REFERENCED SAME.
- 2005 COMBS CSM VOL 29 PG 6 FD G-MON. N89-59-54W 2657.58 TO FD PUNCH HOLE IN M.H. @ N 1/4 COR SEC 35. FROM PUNCH HOLE TO POB OF CSM IS S58-46-44E 559.68.
- 2005 HANSEN V-21(1) DATA ON WIDOT PROJECT #5351-01-22-4.01 DATED AUGUST 3 2005 BY THOMAS HANSEN, RLS #2033. ALUM. MON. 270,537.124; 490,762.418
- 2006 RICK V-21(2) WIDOT CONSULTANT -RICK- USING TRIMBLE GPS EQUIPMENT & HEIGHT MODERNIZATION SURVEY STATION "JANESVILLE W GPS [DF9679] PROVIDED THE FOLLOWING COUNTY COORDINATES ON MARCH 21, 2006 FD MON. 270,537.706; 490,762.250'

FOUND ALUM. G-1 MONUMENT & REFERENCE MONUMENTS. DID NOT ACCEPT G-1 MONUMENT. PLACED AN ALUMINUM SURVEY SPIKE AND DID NOT REMOVE G-1 MON.

C) Was the corner restored through acceptance of (1) an obliterated evidence location, or, (2) a found perpetuated location?

ACCEPTED INTERSECTION OF CALL DISTANCES TO THE REFERENCE MONUMENTS.

Donald Barnes
3/28/06

JA611

D) Describe any material discrepancy between the location of the corner as restored or reestablished and the location of that corner as previously restored or reestablished by distance and direction. Show the discrepancy on the plan view drawing under (a), above. Show the distances between the corner as previously restored or reestablished and (1) the corner as restored or reestablished, and (2) to at least 4 of the witness monuments shown on the drawing in (a), above.

INDEPENDENT OBSERVATIONS BY THE FOLLOWING:

- 1) 2005 COMBS GSM VOL 29 PG 6 - FD G-MON.
- 2) 2005 HANSEN V-21(1) DATA ON WIDOT PROJECT #5351-01-22-4.01
- 3) 2006 RICK V-21(2) WIDOT CONSULTANT. USED GPS WITH WIDOT HEIGHT MOD. MONUMENTS. BY USING HIS GPS COORDINATE VALUES IN MY NETWORK ADJUSTMENT, I DETERMINED THERE WAS A PROBLEM WITH THE LOCATION OF THE G-1 MON AS ORIGINALLY CALLED FOR BY ME.

ADDITIONAL CONVENTIONAL OBSERVATION BY ME TO WIDOT GPS MON STATION DG4887 AND THE REFERENCE MONUMENTS CONFIRMS THE PROBLEM. THE MONUMENT WAS EITHER PLACED IN THE INCORRECT LOCATION, WAS MOVED OR WAS DISTURBED. SINCE THE DISCREPANCY IS 0.02' N/S AND 0.60' E/W IT WILL AFFECT GSM VOL 29 PG 6 IN ONLY THE CALL DISTANCE BETWEEN THE N ¼ COR SEC 35 AND THE NE COR SEC 35.

(E) Was the corner reestablished through lost corner proportionate methods? If so, show the method, including the directions and distances to other public land survey corners used as evidence or used for proportioning the corner location.

NO

I, **Donald Barnes**, hereby certify that the corner location as identified by the corner code index was determined by me under my direction and control and that this U.S. Public Land Survey Monument Record is correct and complete to the best of my knowledge and belief.

Seal

Donald Barnes
ENCLOS

3/28/06

SHEET 3 OF 5

CORNER CODE **V-21(3)**

A.E. 7.08 REQUIREMENT

OLD NAME
MADISON RD
MINERAL PT RD

◇ NW COR
SEC 36
JANESVILLE TWP

MADISON ST

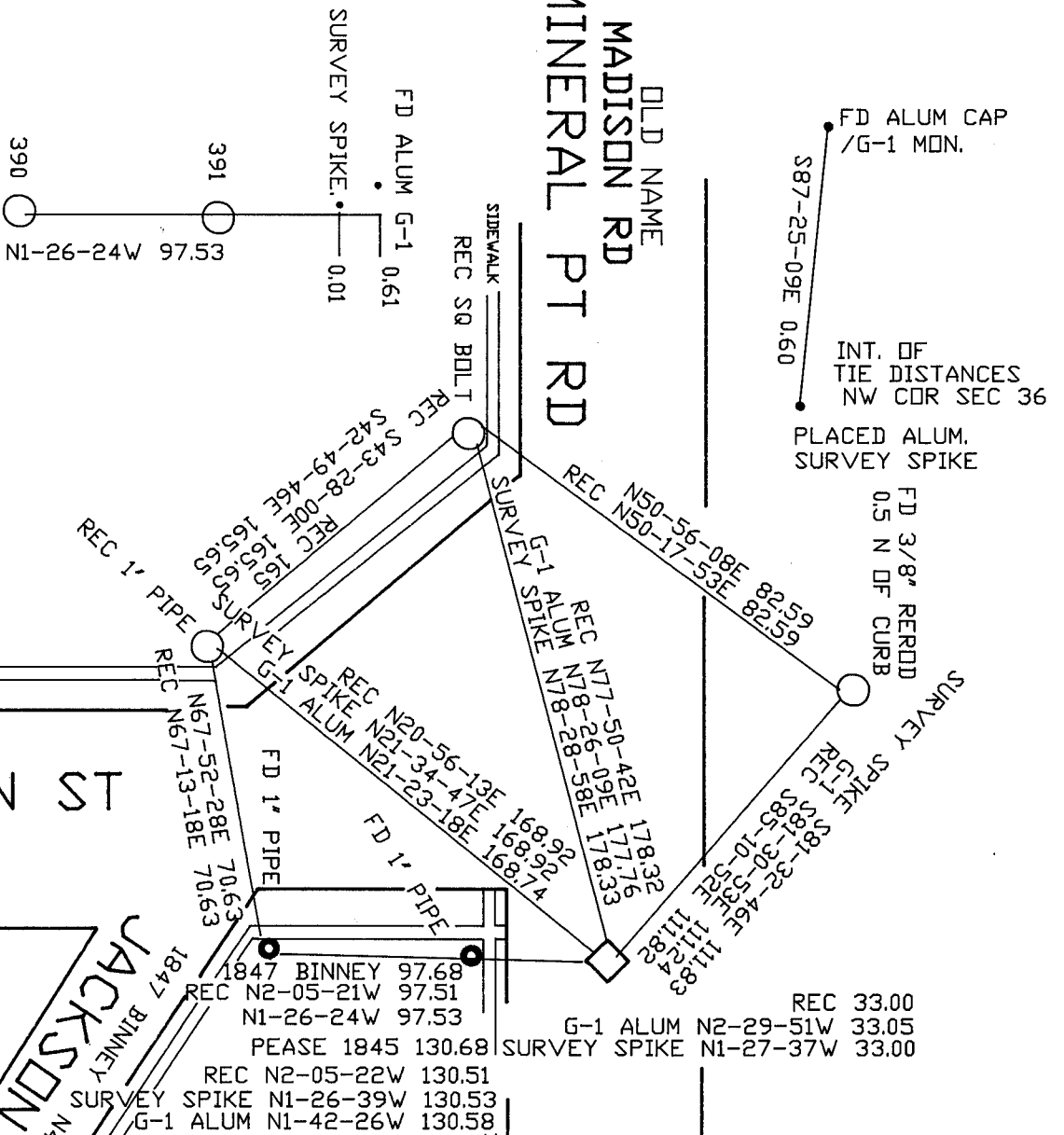
JACKSON ST

OBSERVATION SHEET 1611J

V-21(3)

NOT TO SCALE

SHEET 4 OF 5

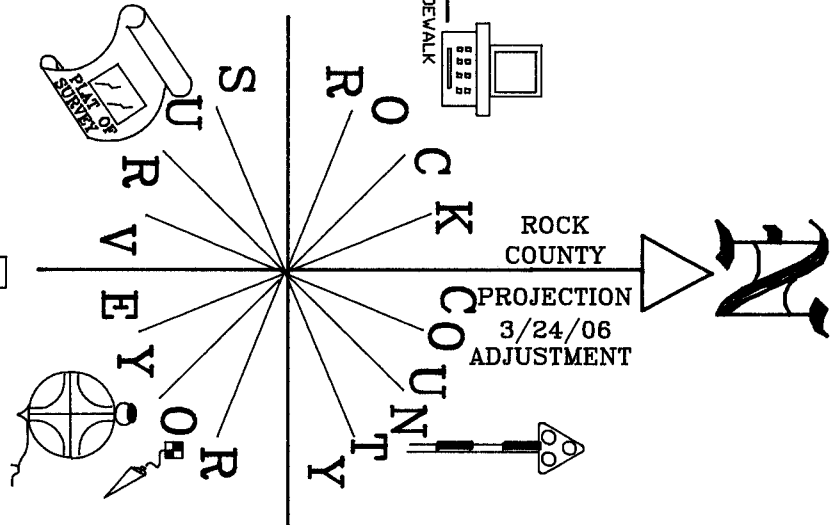


FD ALUM CAP /G-1 MON.
S87-25-09E 0.60
INT. OF TIE DISTANCES NW CDR SEC 36
PLACED ALUM. SURVEY SPIKE

FD 3/8" RERODD 0.5 N OF CURB
SURVEY SPIKE

REC 33.00
G-1 ALUM N2-29-51W 33.05
SURVEY SPIKE N1-27-37W 33.00

1847 BINNEY 97.68
REC N2-05-21W 97.51
N1-26-24W 97.53
PEASE 1845 130.68
REC N2-05-22W 130.51
SURVEY SPIKE N1-26-39W 130.53
G-1 ALUM N1-42-26W 130.58



EMBRASSED SPW
Donald Barnes
3/29/06

SEC 26

MINERAL POINT RD

1991 BARNES S88-28-41W 2658.21
HOLE-SURVEY SPIKE N89-06-54E 2658.19
HOLE-G1 MON S89-06-51W 2657.59

2005 COMBS CSM 29 PG 6 N89-59-54W 2657.58

8317
N88-27-31E 65.76
S1-20-28E 100.20
8316
92.88
33.26
32.51
32.51
93
N88-52-48E 33.09
111
66.00
N89-05-04E 68
315
97.32
32.77
N 1/4 COR



ROCK COUNTY PROJECTION

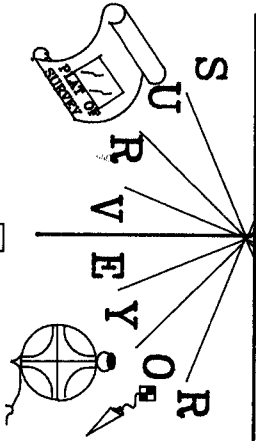
LOT 25

WASHINGTON ST
1847 BINNEY 241.23

LOT 24

LOT 23

BK 1 PG 1



NOT TO SCALE

David M. Barry
EMBOSSED SEAL

3/29/06

PT @ 90 FROM 395

N1-26-48W 999.42

.01 ● 391
.00 ● 390
66.08 ● 388
.04 ● 393
.08 ○ 389
0.05 ○ 394

- ▽ FD OLD TRAV
- FD 1" PIPE
- FD 3/4" PIPE
- FD PIPE
- FD SQUARE
- BOLT

N1-27-08W 843.95
1847 BINNEY NORTH 835.89

1847 BINNEY 241.23

N1-26-46W

135.66
S1-29-16E

140.41
S1-24-12E

100.04
S1-29-07E

391.53
97.53
BK 1 PG 9 130.68
BK 11 PG 7 130.68
N1-26-41W 130.53

NE COR
SEC 35

SURVEY SPIKE
G-1 S88-42-42E 2664.68
2005 HANSEN S88-42-29E 2665.27
G-1 S88-42-41E 2665.28
2006 RICK G-1 S88-42-39E 2665.21

SEC 25

1/4 COR
SEC 36

V-21(3)