

# U.S. PUBLIC LAND SURVEY MONUMENT RECORD

For Public Land Survey Corners in:

WI ADMINISTRATIVE CODE A-E 7.08 REQUIREMENT

T. 3 N., R. 12 E

### CORNER CODE INDEX

A	1	2	3	4	5	6	7	8	9	10	11	12	13	14	15	16	17	18	19	20	21	22	23	24	25
B																									
C	6																								
D																									
E																									
F																									
G	7																								
H																									
J																									
K	18																								
L																									
M																									
N																									
O																									
P	19																								
Q																									
R																									
S																									
T	30																								
U																									
V																									
W																									
X	31																								
Y																									
Z																									

JANESVILLE TWP

ROCK COUNTY WI

IF AVAILABLE  
ROCK COUNTY COORDINATES PREFERRED

North \_\_\_\_\_ Elev. \_\_\_\_\_

East \_\_\_\_\_

Hor. Datum \_\_\_\_\_ Vert. Datum \_\_\_\_\_

LATITUDE \_\_\_\_\_ ELLIPS. HT. \_\_\_\_\_

LONGITUDE \_\_\_\_\_

GPS (X) \_\_\_\_\_ TRAVERSE (X) \_\_\_\_\_

BASED ON THE FOLLOWING CONTROL:

PLACE MONUMENT SYMBOL  AT PROPER LOCATION ON ABOVE INDEX

CORNER MONUMENT

WITNESS MONUMENT

(a)

BEARINGS ARE BASED ON:

OBSERVATION SHEETS

FIELD BOOK \_\_\_\_\_ PAGE # \_\_\_\_\_

SHEET 1 OF 2

SHOW A PLAN VIEW DRAWING DEPICTING THE CORNER MONUMENT AND SURROUNDING PHYSICAL FEATURES, INCLUDING THE EXCAVATION AREA AND DEPTH.

PLANNING & ZONING COMMITTEE ADOPTED THE ABOVE FORM ON 12/2/1982

CORNER CODE J21(31)

JA551

(B) Describe any record evidence, monument evidence, occupational evidence, testimonial evidence or any other material evidence you considered, and whether the monument was found or placed.

- 1873 RUGER VOL 2 PG 19 FD L.S. 18X8X4 AT COR. 2654.52 VAR 7-30 TO S 1/4 COR SEC 11, VAR 6-50 2641.48 TO E 1/4 COR SEC 11, E 1/4 COR SEC 11 ON LINE & MIDWAY BETWEEN NE & SE CORNERS OF SEC 11.
- 1880 LEE VOL 2 PG 303 FD COR. SET BY RUGER 2661.34 TO N 1/4 COR SEC 13 & VAR 6-35 TO W 1/4 COR SEC 12.
- 1936 SUNNY VOL 3 PG 303 DUG 6X11 HOLE FD 4"X6"X11" L.S. 12" LOW. 2663.00 TO S 1/4 COR SEC 11. REFERENCED SAME.
- 1939 SUNNY VOL 3 PG 445 FD COR AS SHOWN ON PG 303 RESET 2X36 IRON PIPE AFTER COMPLETING OF USH 51. NOT IN CONCRETE. REFERENCED SAME.
- 1958 VOL 3 PG 303. RESET 2" PIPE 21.5' SOUTH OF CENTER OF 2 LANES 50' EAST OF CENTER OF USH 51.
- 1961 BATTERMAN 2665.61 TO S 1/4 COR SEC 12 & 2644.0 TO E 1/4 COR SEC 11.
- 1963 BATTERMAN JR. VOL 4 PG 165 FD 2" PIPE SET BY SHIMEALL. REFERENCED SAME. MAP SHOWS COR. IS NORTHERLY OF CENTER OF STH 14 34.23' & SOUTH EASTERLY OF STH 26 42.23'.
- 197? HURD MAPPING COMPANY. VOL 5 PG 517 N/S 267,687.25; E/W 2,259,861.20
- 1977 BARNES VOL 5 PG 361 FD 2" PIPE & 1" PIPE ON NORTH EDGE OF 2" PIPE. SET ALUM & REFERENCED SAME
- 1983 BARNES J-21 FD ALUM. REFERENCED SAME.
- 1983 BARNES J-21(1) FD BRASS DISK IN CONC. CUT "X". REFERENCED SAME. FD TIES SET 3/4X26 BOLT WITH DISK ABOVE IN CONCRETE
- 1988 BARNES REMONUMENTATION S88-12-19W 2655.76 TO S 1/4 COR SEC 11, S1-42-25E 2646.31 TO E 1/4 COR SEC 14, S89-23-02E 2665.66 TO S 1/4 COR SEC 12, & N1-06-12W 2643.94 TO E 1/4 COR SEC 11. FROM SW TO S 1/4 COR SEC 11 N89-12-52E 2661.22.
- 1993 BARNES J-21(2) FD DISK. DISK WILL BE DESTROYED. REFERENCED SAME. DISK WILL BE DESTROYED

**FD DOT DISK IN ROUND MON. BOX.**

C) Was the corner restored through acceptance of (1) an obliterated evidence location, or, (2) a found perpetuated location?

**ACCEPTED FOUND PERPETUATED LOCATION.**

D) Describe any material discrepancy between the location of the corner as restored or reestablished and the location of that corner as previously restored or reestablished by distance and direction. Show the discrepancy on the plan view drawing under (a), above. Show the distances between the corner as previously restored or reestablished and (1) the corner as restored or reestablished, and (2) to at least 4 of the witness monuments shown on the drawing in (a), above.

(E) Was the corner reestablished through lost corner proportionate methods? If so, show the method, including the directions and distances to other public land survey corners used as evidence or used for proportioning the corner location.

I, Donald Barnes, hereby certify that the corner location as identified by the corner code index was determined by me under my direction and control and that this U.S. Public Land Survey Monument Record is correct and complete to the best of my knowledge and belief.

seal  
*Donald Barnes*

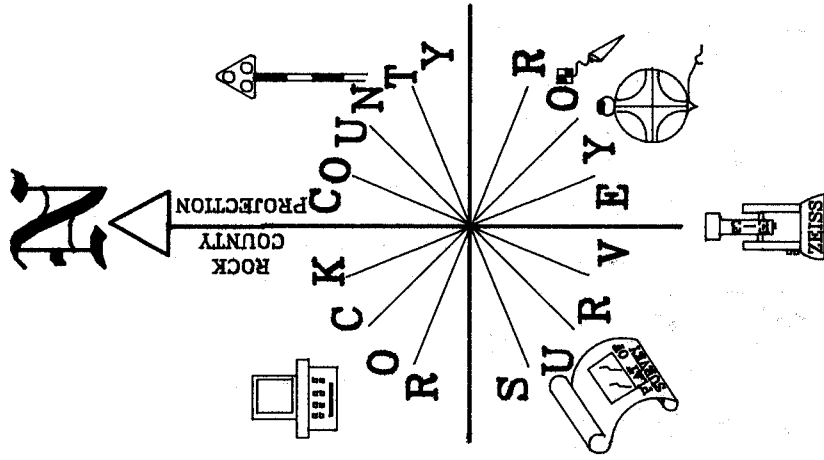
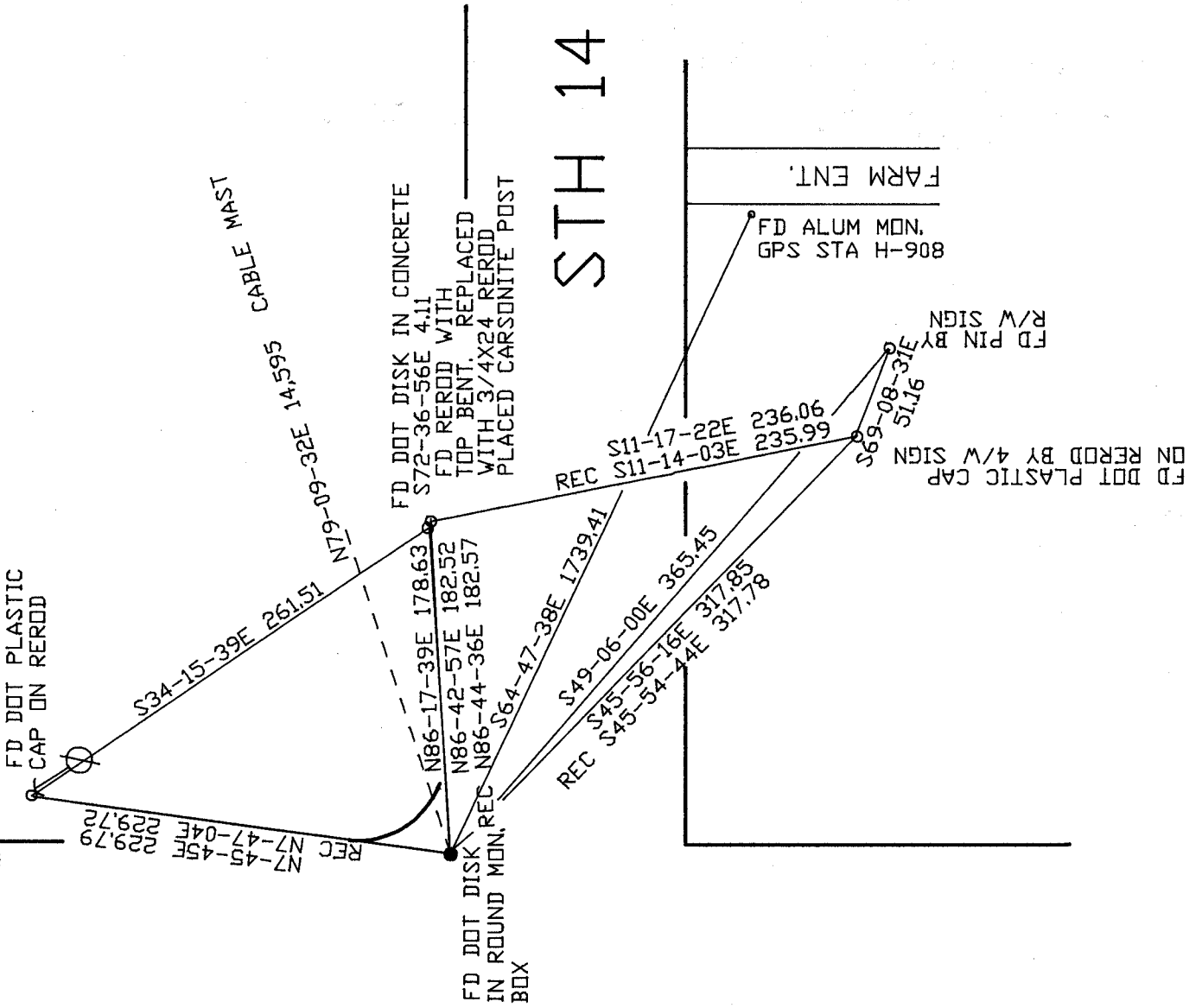
*May 13 1999*  
emboss

Number of included sheets **1**

CORNER CODE **J-21(3)**

USH 51

Donald Barnes  
EMBOSSED SEAL  
May 13 1999



OBSERVATION SHEET

J-21(3)