

# U.S. PUBLIC LAND SURVEY MONUMENT RECORD

For Public Land Survey Corners in:

WI ADMINISTRATIVE CODE A-E 7.08 REQUIREMENT

T. 3N., R. 12E

### CORNER CODE INDEX

A	1	2	3	4	5	6	7	8	9	10	11	12	13	14	15	16	17	18	19	20	21	22	23	24	25
B																									
C	6																								
D																									
E																									
F																									
G	1																								
H																									
I																									
J																									
K																									
L	18																								
M																									
N																									
O																									
P	19																								
Q																									
R																									
S																									
T	30																								
U																									
V																									
W																									
X	31																								
Y																									
Z																									

JANESVILLE TWP

ROCK COUNTY WI

IF AVAILABLE  
ROCK COUNTY COORDINATES PREFERRED

North \_\_\_\_\_ Elev. \_\_\_\_\_

East \_\_\_\_\_

Hor. Datum \_\_\_\_\_ Vert. Datum \_\_\_\_\_

LATITUDE \_\_\_\_\_ ELLIPS. HT. \_\_\_\_\_

LONGITUDE \_\_\_\_\_

GPS (X) \_\_\_\_\_ TRAVERSE (X) \_\_\_\_\_

BASED ON THE FOLLOWING CONTROL:

PLACE MONUMENT SYMBOL  AT PROPER LOCATION ON ABOVE INDEX

CORNER MONUMENT

WITNESS MONUMENT

(a)

BEARINGS ARE BASED ON:

OBSERVATION SHEET

FIELD BOOK \_\_\_\_\_ PAGE # \_\_\_\_\_

SHEET 1 OF 2

SHOW A PLAN VIEW DRAWING DEPICTING THE CORNER MONUMENT AND SURROUNDING PHYSICAL FEATURES, INCLUDING THE EXCAVATION AREA AND DEPTH.

PLANNING & ZONING COMMITTEE ADOPTED THE ABOVE FORM ON 12/2/1982

CORNER CODE E 21 (2)

JA531

(B) Describe any record evidence, monument evidence, occupational evidence, testimonial evidence or any other material evidence you considered, and whether the monument was found or placed.

- 1870 RUGER VOL 2 PG 20 III STONE IN CENTER OF RD. SET III STONE 10X8X7. 2643.52 TO S ¼ COR SEC 2. 2651.72 VAR 7-14 TO E ¼ COR SEC 2.
- 1873 RUGER VOL 2 PG 19 FD WEST BEARING TREE. ALSO FD III STONE AT CORNER. VAR 8-08 2643.08 TO S ¼ COR SEC 2 & 2642.97 VAR 6-50 TO E ¼ COR SEC 11. E ¼ COR SEC 11 LOST. ESTABLISHED IN A TRUE LINE BETWEEN THE SEC. CORNERS. (MIDWAY).
- 1890 BLEEDORN VOL 2 PG 438 SEC COR SEE PG 16.
- 1925 SUNNY 2660.10 TO E ¼ COR SEC 2
- 1939 SUNNY VOL 3 PG 413 FD 6X12X18 III MON. SET 2"X4" C.I. ROUND MON. IN CONCRETE.
- 1939 SUNNY VOL 3 PG 445 FD 6X12X18 III 12-6-38. SET 2"X4" C.I. ROUND MON. IN NEW CONC. PVMT. JULY 1939. REFERENCED SAME.
- 1951 SUNNY 2645.20 TO S ¼ COR SEC 1.
- 1961 BATTERMAN JR. 2644.00 TO E ¼ COR SEC 11.
- 1963 BATTERMAN JR. VOL 4 PG 165 PK WEST OF CENTER USH 51. REFERENCED SAME.
- 1969 THOM SR. 2655.36 TO E ¼ COR SEC 2
- 1974 LICHT 2655.59 TO E ¼ COR SEC 2
- 1976 BARNES VOL 5 PG 210 USED COR TO ESTABLISH N ¼ COR SEC 11 ON LINE & MIDWAY BETWEEN NE & NW CORNERS OF SEC 11. 2642.47 TO N ¼ COR SEC 11.
- 1977 HURD MAPPING. N/S 272,974.106; E/W 2,259,759.741
- 1977 BARNES VOL 5 PG 343 FD BRASS PLUG & REFERENCED SAME.
- 1979 BARNES VOL 6 PG 3 FD BRASS PLUG. REPLACED WITH ALUM. MON.
- 1986 BARNES REMONUMENTATION S88-39-37W 2642.38 TO S ¼ COR SEC 2, S89-31-14E 2647.09 TO S ¼ COR SEC 1, N0-51-35W 2656.06 TO E ¼ COR SEC 2, & S1-06-13E 2643.87 TO E ¼ COR SEC 11.
- 1987 BARNES VOL 6 PG 365 S88-39-32W 2642.44 TO S ¼ COR SEC 2 & N0-51-40W 2656.0 TO E ¼ COR SEC 2.
- 1987 BARNES E-21 FD ALUM. MON. & ALL 4 REFERENCE TIES AS SHOWN IN VOL 5 PG 343. 272,974.11 N/S; 2,259,759.32 E/W NAD27. ELEV 929.4 NAD29. HURD 272,974.11 N/S; 2,259,759.74 E/W
- 1999 BARNES E-21(1) FD ALUM. MON & R.R SPIKE. N77-19-25W 22.92 (REC 22.92) FROM ALUM. MON. MEASURED DISTANCES TO FD MONUMENTS ARE NOT IN HARMONY WITH RECORD MEASUREMENTS.

I FOUND WIDOT DISK IN CONCRETE. I DRILLED A HOLE ON SOUTH EDGE OF DISK. THE HOLE IS AT RECORD DISTANCES FROM TIES AND THE FOUND TWP PROJECT R/R SPIKE.

(C) Was the corner restored through acceptance of (1) an obliterated evidence location, or, (2) a found perpetuated location?

ACCEPTED FOUND PERPETUATED REFERENCE MONUMENTS AND R.R SPIKE. USED RECORD DISTANCES TO ESTABLISH DRILL HOLE.

(D) Describe any material discrepancy between the location of the corner as restored or reestablished and the location of that corner as previously restored or reestablished by distance and direction. Show the discrepancy on the plan view drawing under (a), above. Show the distances between the corner as previously restored or reestablished and (1) the corner as restored or reestablished, and (2) to at least 4 of the witness monuments shown on the drawing in (a), above.

SEE SKETCH

I, Donald Barnes, hereby certify that the corner location as identified by the corner code index was determined by me under my direction and control and that this U.S. Public Land Survey Monument Record is correct and complete to the best of my knowledge and belief.

seal

Number of included sheets 1

CORNER CODE **E-21(2)**

emboss

Donald Barnes

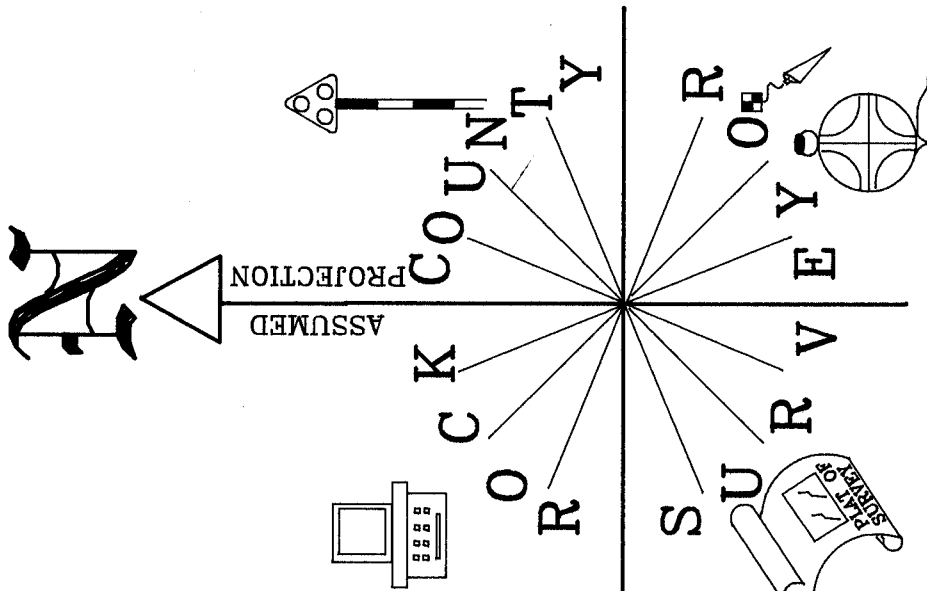
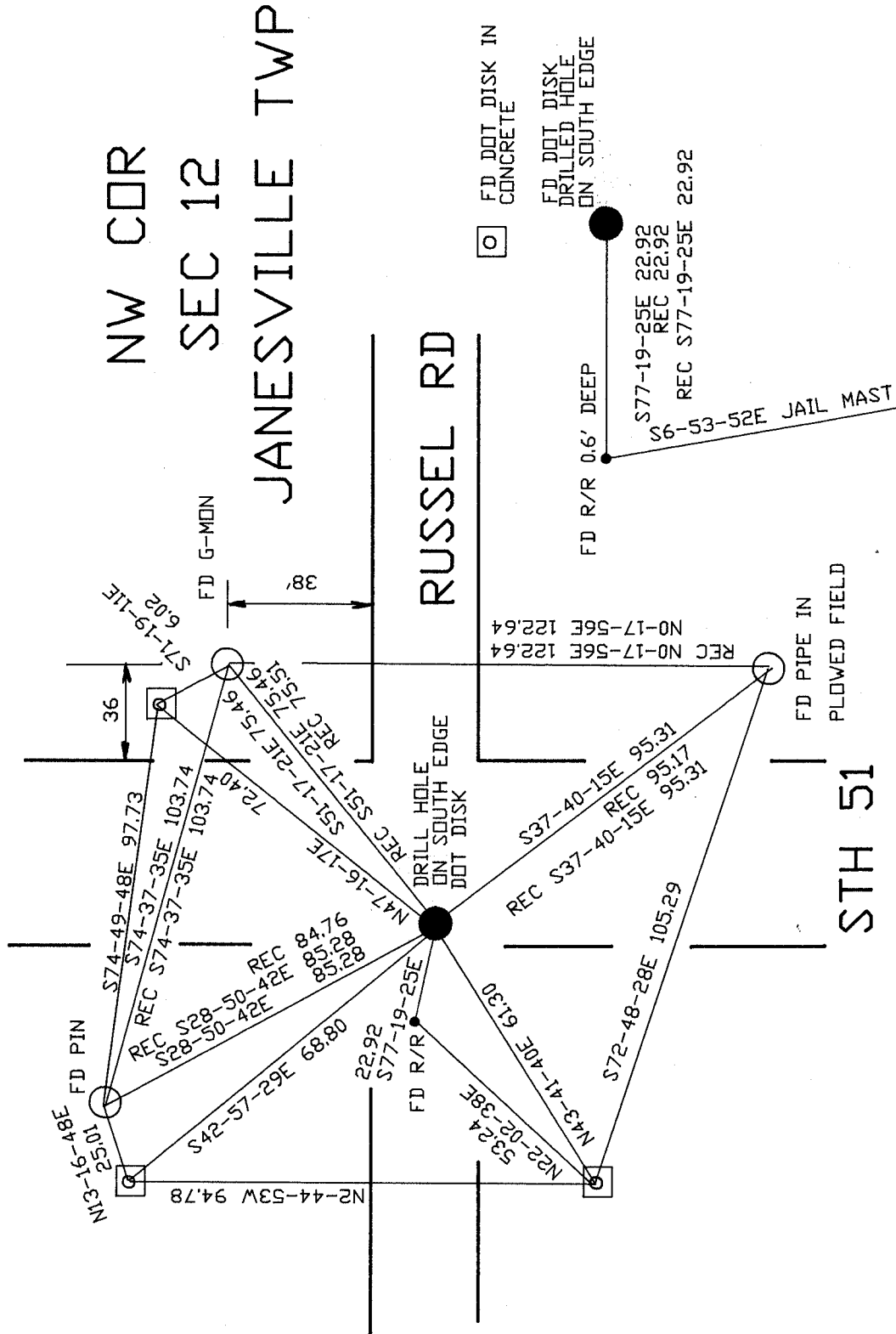
A-E 7.08 REQUIREMENT

11/04/99

Donald Barnes  
Oct 15, 1999

EMBOSSED SEAL 10/15/99

E-21(2)



OBSERVATION SHEET