

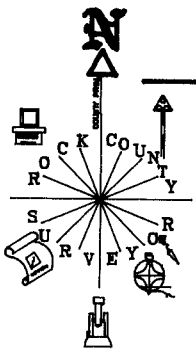




*Donald Barnes*  
 May 25, 1993

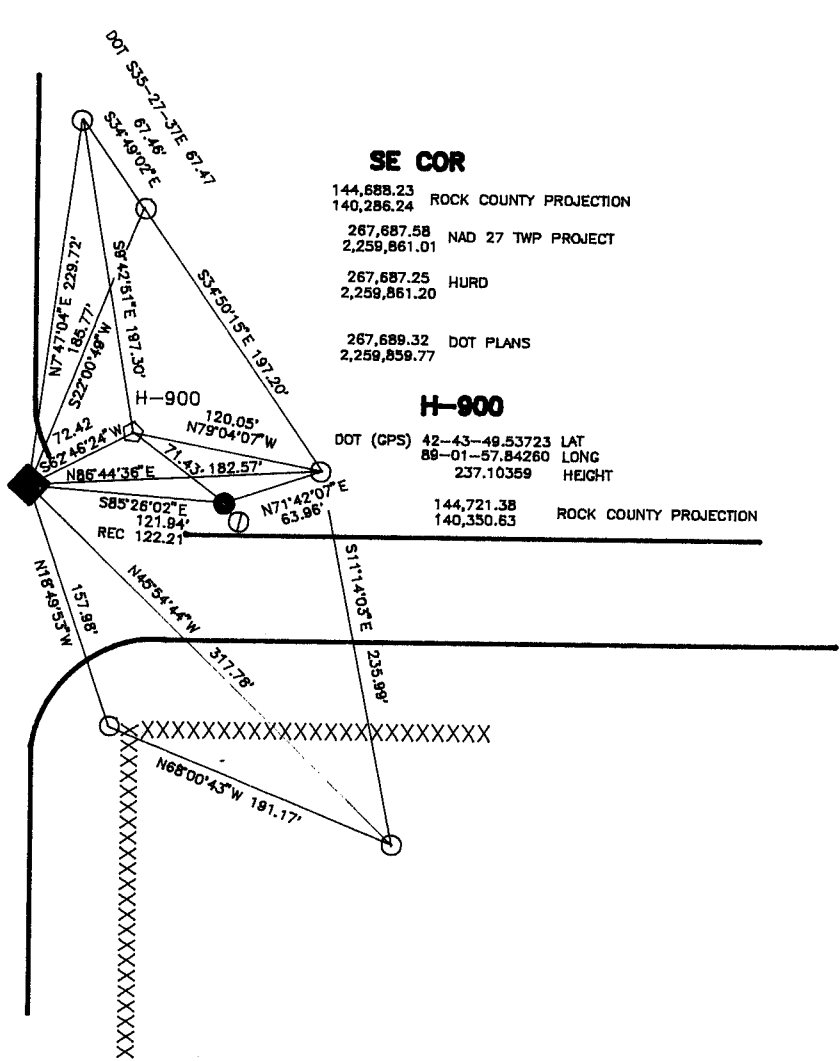
OBSERVATION SHEET #551  
 LOCAL - N/S

- ◊ GPS H900 (DOT)
- ◆ FD DISK  
DISK WILL BE  
DESTROYED
- FD 1" PIPE
- PLACED 3/4X24 REROD  
WITH YELLOW CAP
- FD DOT CAPPED  
PINS



USH "14"

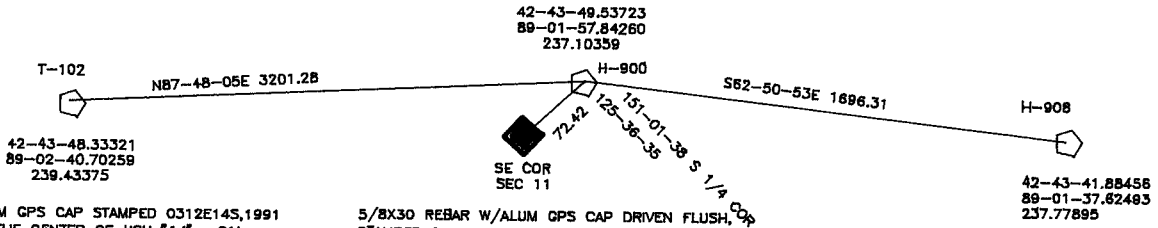
USH "51"



**SE COR**  
 144,688.23  
 140,286.24 ROCK COUNTY PROJECTION  
 267,687.58  
 2,259,861.01 NAD 27 TWP PROJECT  
 267,687.25 HURD  
 2,259,861.20  
 267,689.32 DOT PLANS  
 2,259,859.77

**H-900**  
 DOT (GPS) 42-43-49.53723 LAT  
 89-01-57.84260 LONG  
 237.10359 HEIGHT  
 144,721.38 ROCK COUNTY PROJECTION  
 140,350.63

**DOT GPS POINTS**



5/8X30" REBAR W/ALUM GPS CAP STAMPED 0312E14S,1991  
 THE STA IS 46' S OF THE CENTER OF USH "14", 81'  
 NW OF A POWER POLE, 13' NW OF A FENCE POST, 10.5' NE OF  
 A FENCE POST.

5/8X30 REBAR W/ALUM GPS CAP DRIVEN FLUSH, 1/4" COP SEC 11  
 STAMPED 0312E12S,1991. STA IS 44.5' NE OF  
 LIGHT POLE, 33' NW OF A GUY POLE, 72' NNW OF A  
 WOOD R/W POST. IN THE NE QUADRANT OF THE  
 INTERSECTION

BERNSTEN ALUMINUM MONUMENT SET FLUSH  
 97' SOUTH OF CENTER OF USH 14, 27' WEST OF  
 THE CENTER OF DRIVEWAY, 20' S OF SOUTH END  
 OF ROCK COUNTY FARM SIGN & 0.5' NORTH  
 OF CARSONITE WITNESS POST.