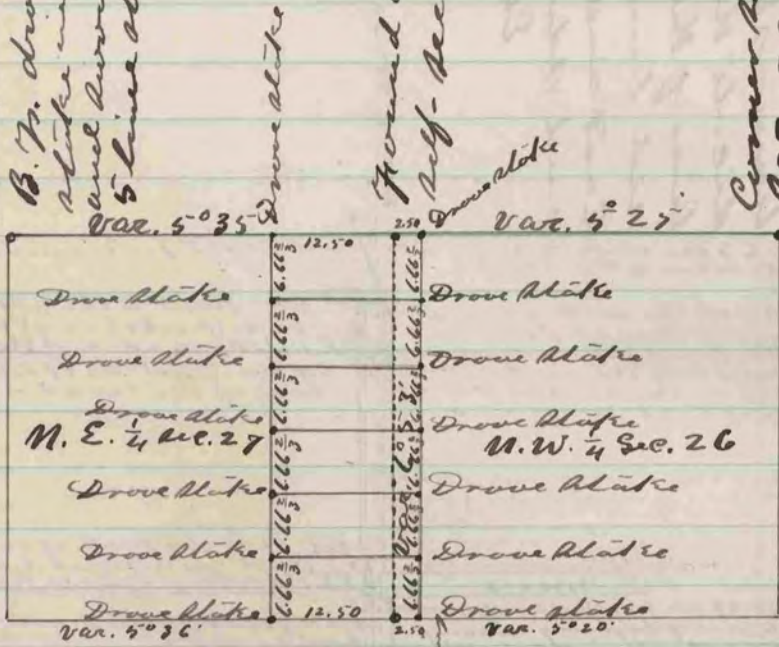


Found old stake & stump of
B. F. drove large new
stake in place of old one
and surrounded it with
5 line stones

Found corner set by
Self - Dec Dec. 23 Bradford

Corner set by Self - Dec
Dec - 23 Bradford



Fence post at
Corner - Found remnant
of B. F. stump -

The above is a record and plat of a
survey made by me, Dec. 13-1873
on the North-west quarter of Section
26 and the North-East quarter of
Section 27 Bradford -

Edward Ruyer
County Surveyor