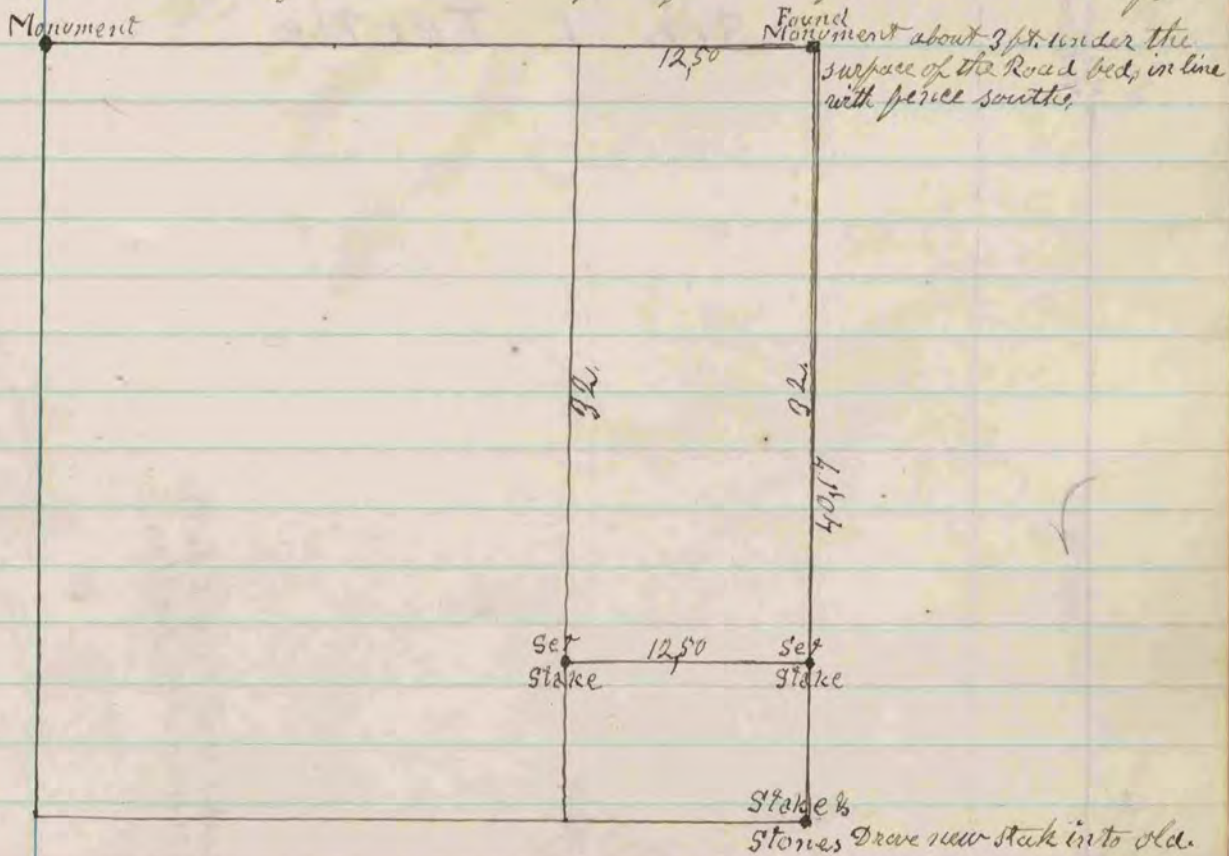


50 Acres from North east part of N.W. 1/4 of Sec. 15 Harmony

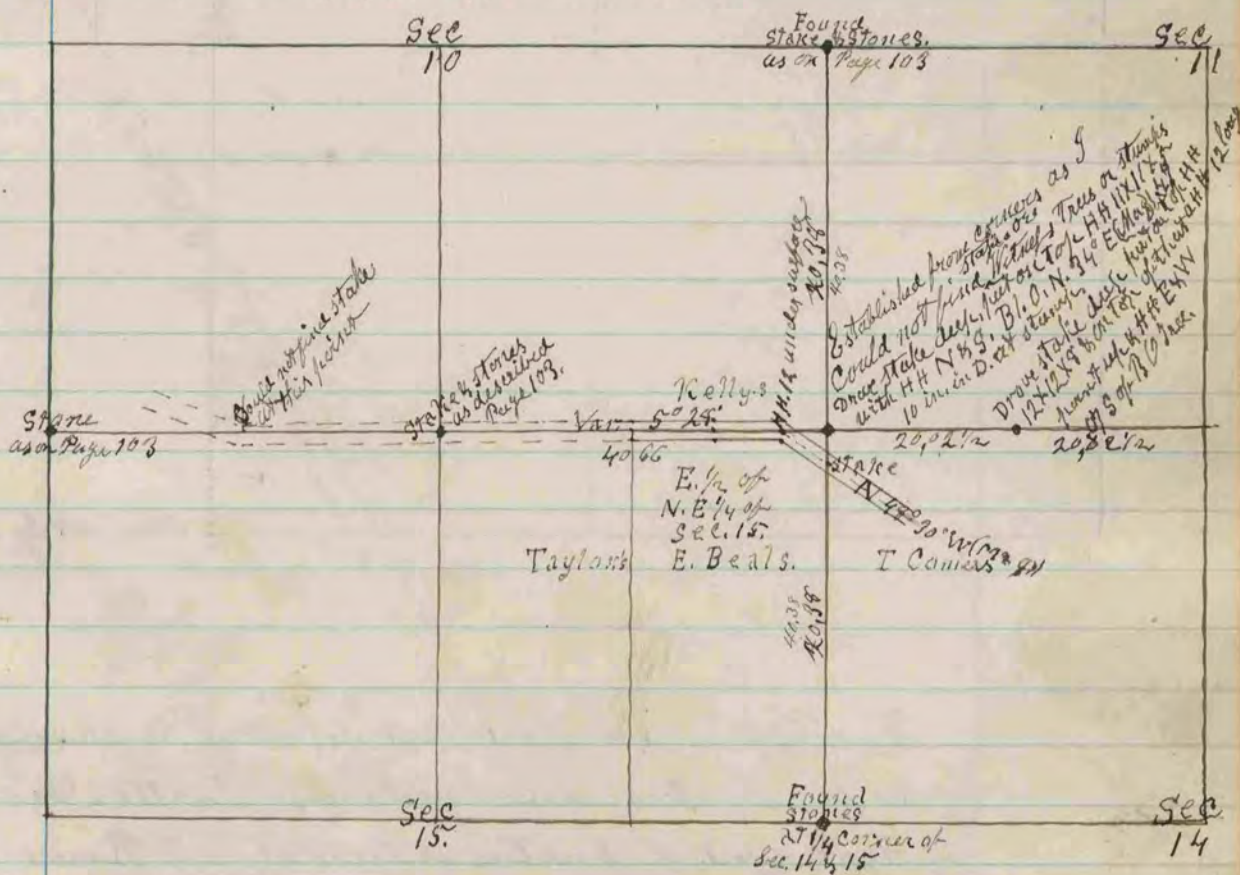
COUNTY SURVEYOR
RECORD 2 1869-1900



The above is a record and plat of a survey made by me on Section 15 in Harmony Dec. 8th 1881.

J. A. Holmes Co. Surveyor

Sec. 15 Avon.



The above is a record and plat of a survey made by me to locate the N.E. corner of section 15 in Avon, and the Beloit and Moore road across the east 1/2 of N.W. 1/4 Dec. 14, 15 & 16, 1881.

J. A. Holmes Co. Surveyor.