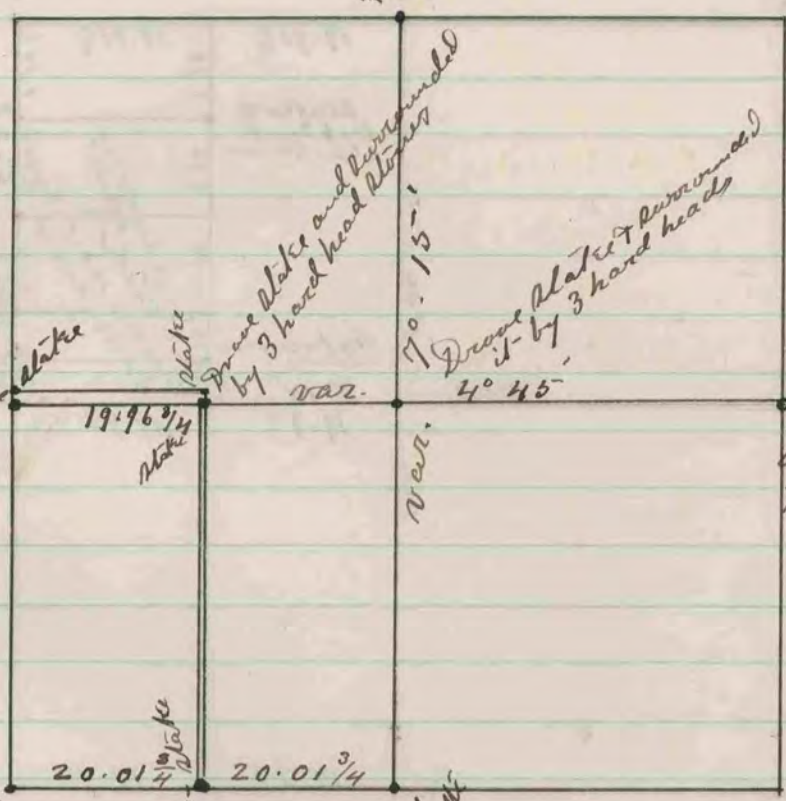


Found corner established by
Locke.

Found corner
established by Locke



Found corner established
by Locke. Stake with
hard head blone on S.E.
side.

Drove stake & surround
ed with 3 hard head
blones.

Found blimp of
B.H. Drove stake
& surrounded it with
3 hard head blones
& 1 line blone.

Found old stake.
Drove new stake
in place of old one,
and surrounded it
with 3 hard head
blones.

In an exchange of property, there was added on the
North end of the W. 1/2 of the S. W. 1/4, a strip 1.50 chs.
wide, and there was taken from the East side
of said W. 1/2 a strip 0.40 chs. wide.

The above is a record and plat of a survey
made by me on section 22 Town 32 Range 7 E. 1877
Edward Reager County Surveyor