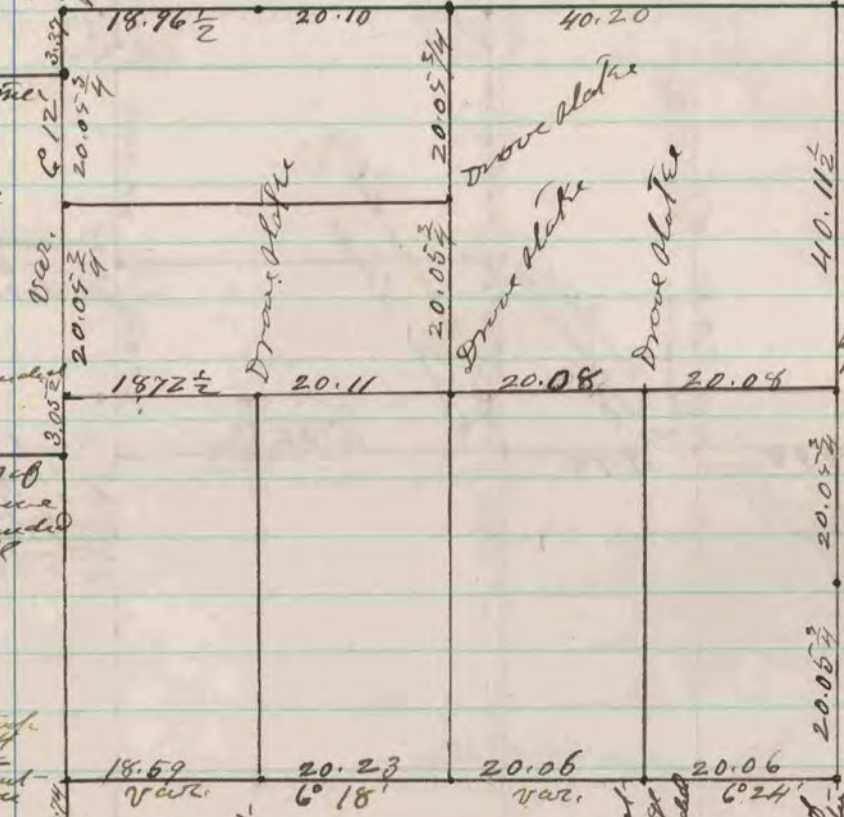


Established Corner from
Corner to Magnolia
Drove station ditch of level
bevel & surrounded
blotter by fence along



Found of appearance of old
blotter - Drove slate
in the place of the old one
& put - hard head alone
on E & W. sides

Found hard alone
at corner

Drove slate

blotter surrounded
by stones -

Found blots of
both N. & S. drive
blotter & surrounded
it with small

The No. 2, P. 7, blots
of 94 instead of 94
blotter -
Drove slate & put
hand head alone on
E & W. sides

Found remains of old slate
and blots of both N. & S.
Drove slate and surrounded
it by a lot of small stones

Drove slate & put - put
alone on E & W. sides

Drove cedar slate
at corner

Found hard head alone at
corner - put one lot of large
head alone & surrounded
it with smaller stones

Found hard head alone one lot of
a large hard head alone at the
corner - put in the place of the
lot of hard head alone a large hard
head alone 17 x 12 x 1 1/2 surrounded
it with 4 large hard head stones and
several small ones

The above is a record and plat
of a survey made by me on section 7
Center Sept. 27 & 28 - 1876

Edward Puger
County Surveyor

COUNTY SURVEYOR
RECORD 2 1869-1900