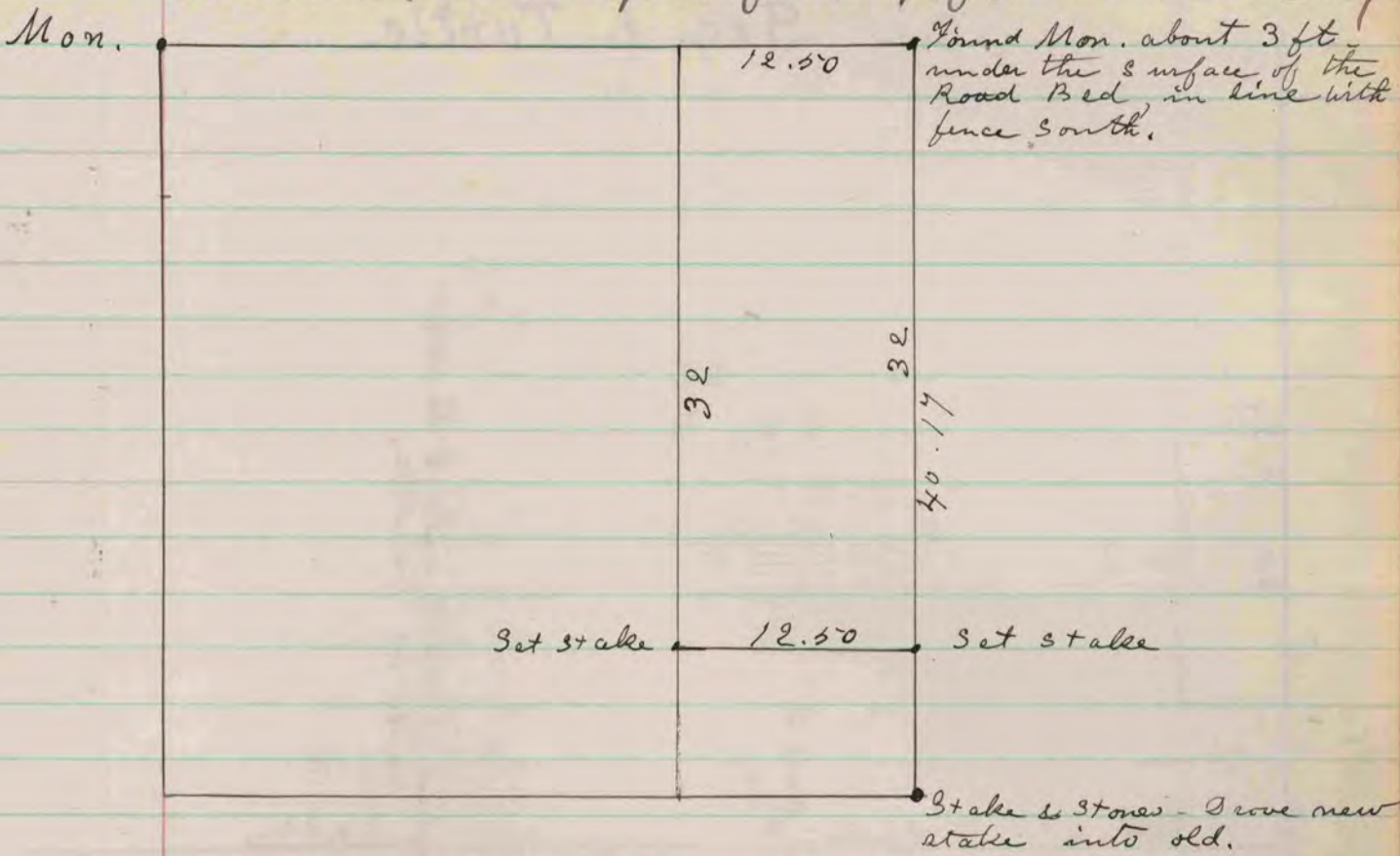


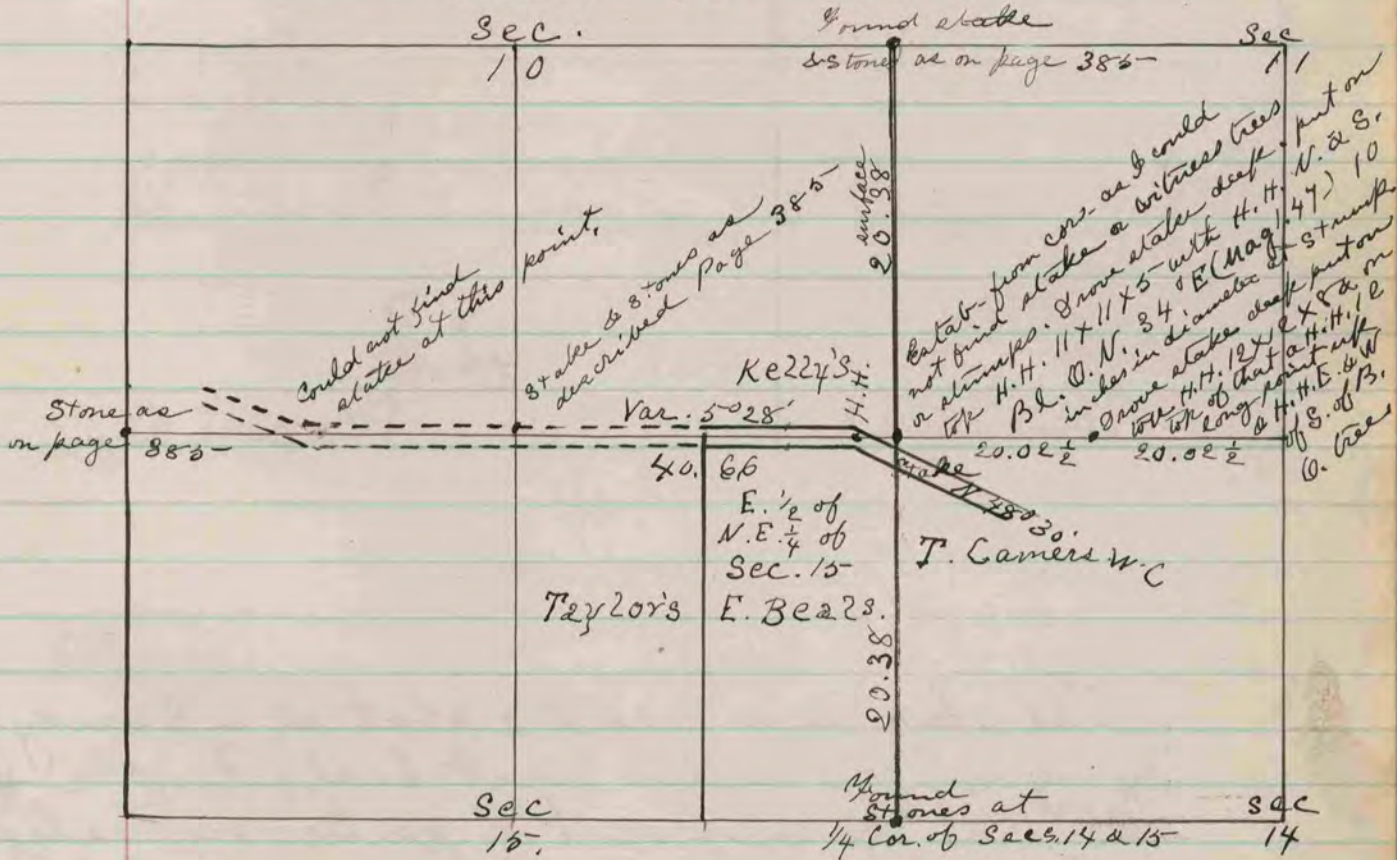
50 Acres from N.E part of N.W. 1/4 of Sec. 15 Harmony.



The above is a record & plat of a Survey made by me on Section 15 in Harmony. Dec 8<sup>th</sup> 1881

J. A. Holmes - Co. Surveyor

Sec. 15 Avon



The above is a record & plat of a Survey made by me to locate the N.E. cor. of Sec. 15 Avon, & the Beloit & Monroe road across the E. 1/2 of N.E. 1/4 - Dec. 14<sup>th</sup>, 15<sup>th</sup> & 16<sup>th</sup> 1881

J. A. Holmes Co. Surveyor