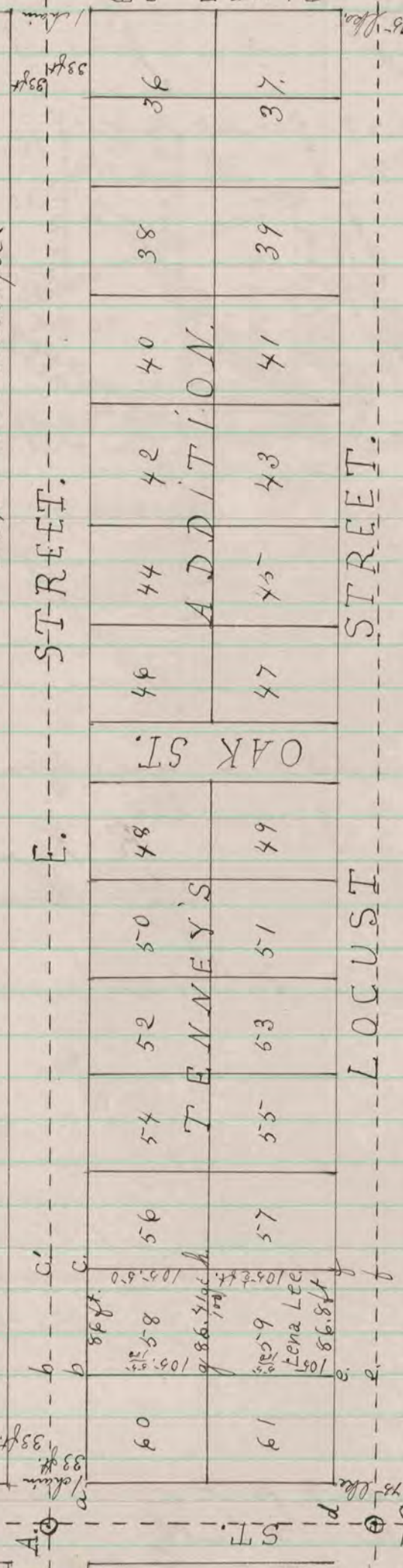


Below is a record & plat of a survey made by me June 16th 1880 of lot at No. 59 in Kenney & addition to the City of Beloit. At the N.W. cor. of said lot I drove a piece of $\frac{7}{8}$ round iron 30 inches long & $\frac{1}{4}$ inches in face - placed on top of iron & lime stone $8 \times 5 \frac{1}{2} \times 4 \frac{3}{4}$ in. At N.E. cor. drove piece of $\frac{7}{8}$ round iron 18 $\frac{1}{2}$ in. long with triangular limestone $6 \frac{1}{2} \times 6 \frac{1}{2} \times 8 \frac{1}{2}$ in. on top upon it. At S.E. cor. drove $\frac{7}{8}$ round iron $40 \frac{1}{4}$ in. long with limestone set on end at S. side. Stone is $9 \times 5 \times 4$ in. At S.W. cor. drove $\frac{7}{8}$ round iron 28 $\frac{1}{2}$ in. long with limestone $12 \times 6 \times 4 \frac{1}{2}$ in. on top upon it.

R. K. Lee -
Deputy Co. Surveyor.



Found at A, B, D & E. Stone monuments established at the intersecting center lines of the streets - I measured from A. to B. using an adjusted steel ch. 100 ft. its length & found distance to be $1293 \frac{2}{10}$ ft. the recorded distance being $1290 \frac{3}{10}$ ft. making an excess on this line of $29 \frac{9}{10}$ ft. I measured from C. to D. & found distance to be $1301 \frac{7}{10}$ ft. the recorded distance being $1284 \frac{4}{10}$ ft. showing an excess on this line of $14.5 \frac{3}{10}$ ft. - I measured A, C & found recorded distance to be correct $126 \frac{8}{10}$ ft.

I next found point marked A in center line of Eighth St. & 33 ft. S. from A. - Also found B' in line A, B at distance of 119.07 ft. from monument at A. & make B in same line 86 ft distance from B'.

I next found E in line C D & made distance C E' = 116.8 ft. I then fixed point f in same line 86.8 ft. from E' - From the points B & C. the distance to B & C is 33 ft. & from the points e & f the distance to e & f is $24 \frac{3}{4}$ ft. g is the point established by my survey as the N.W. cor. of lot 5-9 & is equidistant from B & C being $105 \frac{2}{10}$ ft. from each. h is the point established by my survey as the N.E. cor. of lot 5-9 & is equidistant from C & f being $105 \frac{2}{10}$ ft. from each. i & j are the S.W. & S.E. cor. respectively of lot 5-9.

RECORD FOR THE
COUNTY ENGINEER

FIFTH ST. A B
BLUFF ST. C D