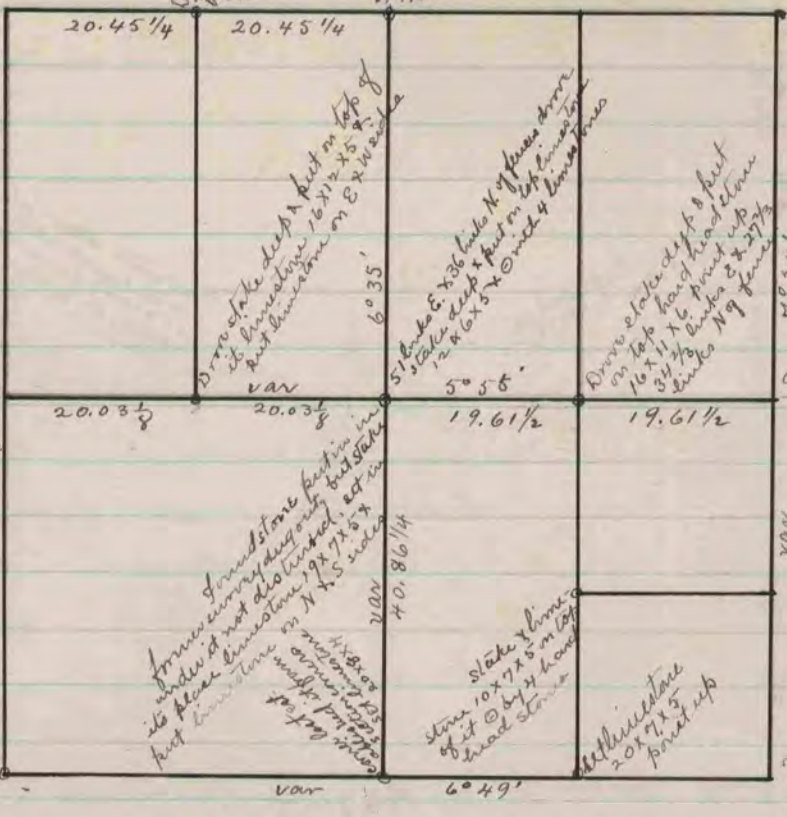


Found old stake & hard head stone at corner. Drove new stake deep in place of old one, & put on top of it hard head stone 16x8x7 & surrounded it by a lot of stones.

Found limestone & two old stakes under it one very much decayed. Drove new stake deep & put limestone on top of it 16x7x6 & surrounded it with 4 limestone stones.

Found old stake & hard headstone on top of it - drove old stake down & put on top of it hard headstone 18x11x6



Found old stake, & stump of SW. 1/4 (should read SW. 1/4) instead of SW. 1/4 where stumps of NW 1/4 had been deep & put on top of it limestone 14x6x5 & with 4 hard head stones. Corner is about 1/2 S. of E. & W. fence & 40 links E. of fence on W. side of road.

Corner lost, established it from section corner set hard head stone 20x9x6 on top of another hard head stone - surrounded it with 3 hard head & 1 limestone

Found old stake & where stump of SW. 1/4 had been dug up - set hard head stone 26x13x6 & put up.

The above is a record & plat of a survey made on Sec 12, Porter May 15 & 16, 1871 and on the NW 1/4 of said section Nov. 10 - 1874 - by Edward Ruger County Surveyor.

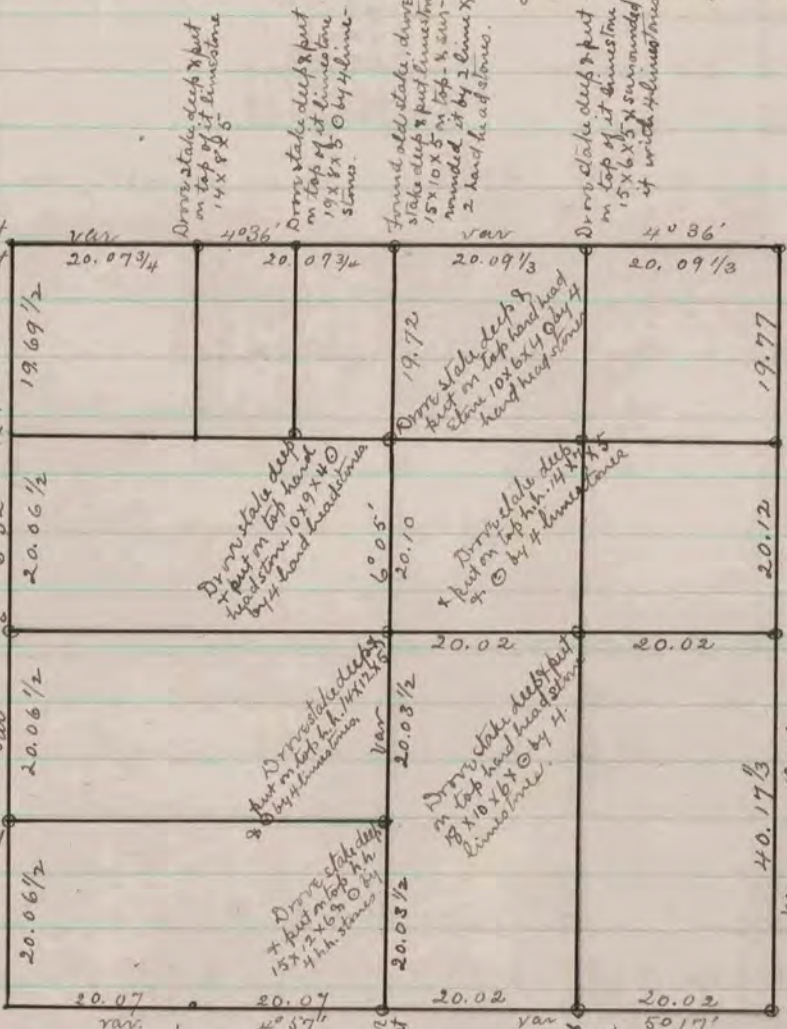
Found old stake & stone beside it, drove new stake deep & put on top of it limestone 18x12x4 & surrounded it by small limestones.

Drove stake deep & put on top of it hard headstone 14x9x7 & surrounded it with 4 hard head stones.

Established corner from section corner. Drove stake deep & put on top of it limestone 21x7x4 & surrounded it with 4 limestones.

Drove stake deep & put on top of it hard headstone 14x11x3 & surrounded it with 4 hard head stones.

Found limestone planted deep & put small iron rod on top of it.



Found old stake, drove stake deep & put on top hard head stone 20x10x9 & surrounded by 4 limestones.

Drove stake deep & put on top hard head stone 13x8x6

Found old stake - drove stake deep & put on top of it hard headstone 17x8x6 & surrounded with 4 limestones.

Found old stake, drove stake deep & put on top hard headstone 15x10x5 & surrounded by 4 limestones

The above is a record & plat of a survey made on section 3, Bradford - May 17 & 18 - 1871 -

Edward Ruger
County Surveyor