

170 See Section 5 Page 19

See Section 5 Page 19

Drove stake and put hard head stone on N. E. S. sides.

Established corner from section corners - Set hard head stone 26 x 13 x 7 and put line stone on East and hard head stone on West.

Set hard head stone 24 x 9 x 8

Found large redish hard head stone on corner - Also found remains of stump of S.W. B. 4

Drove stake deep & put on top of it hard head stone 16 x 10 x 5

Found old stake & remains of stump of East B. 4. Drove stake deep & put on top of it hard head stone 12 x 7 x 5

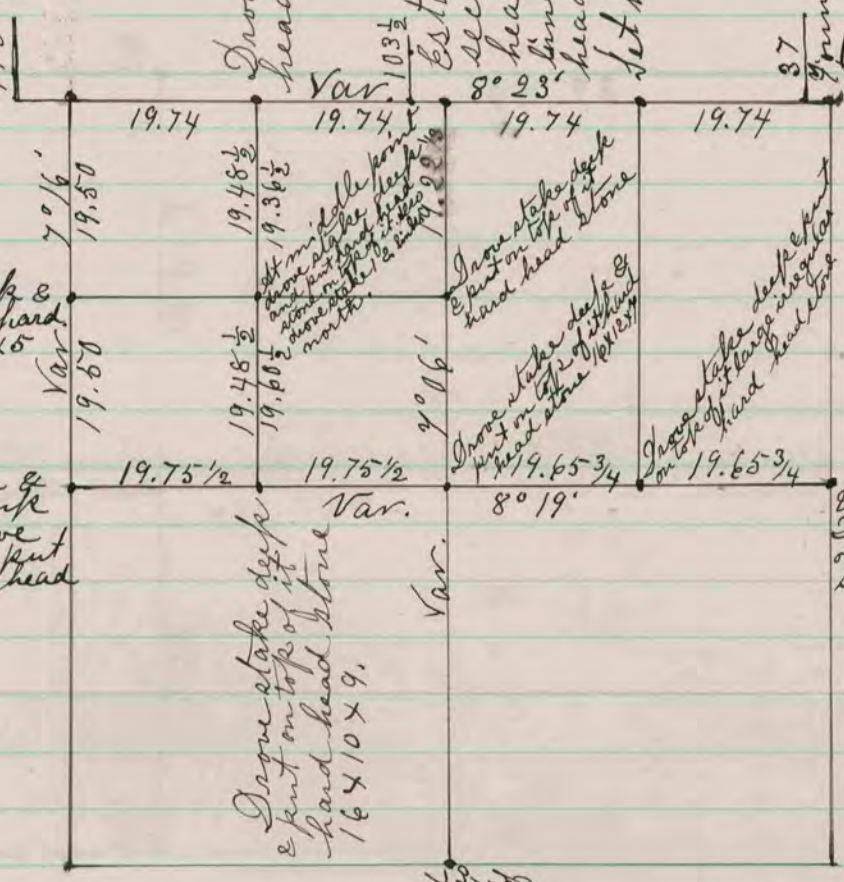
Drove stake deep & put on top of it hard head stone 16 x 10 x 9

Found stake also N. E. B. 4 & stump of S. E. B. 4

Drove stake deep & put on top of it hard head stone 16 x 12 x 7

Drove stake deep & put on top of it large irregular hard head stone

Found old stake & also the stump of both B. 4. Drove stake deep & put on top of it hard head stone 22 x 14 x 12



The above is a record and plat of a Survey made by me on Section 4 Porter. March 28, 30 & 31 - 1874

Edward Ruger
County Surveyor.

RECEIVED 1874
COUNTY SURVEYOR

COUNTY SURVEYOR
RECORD 1859-1906