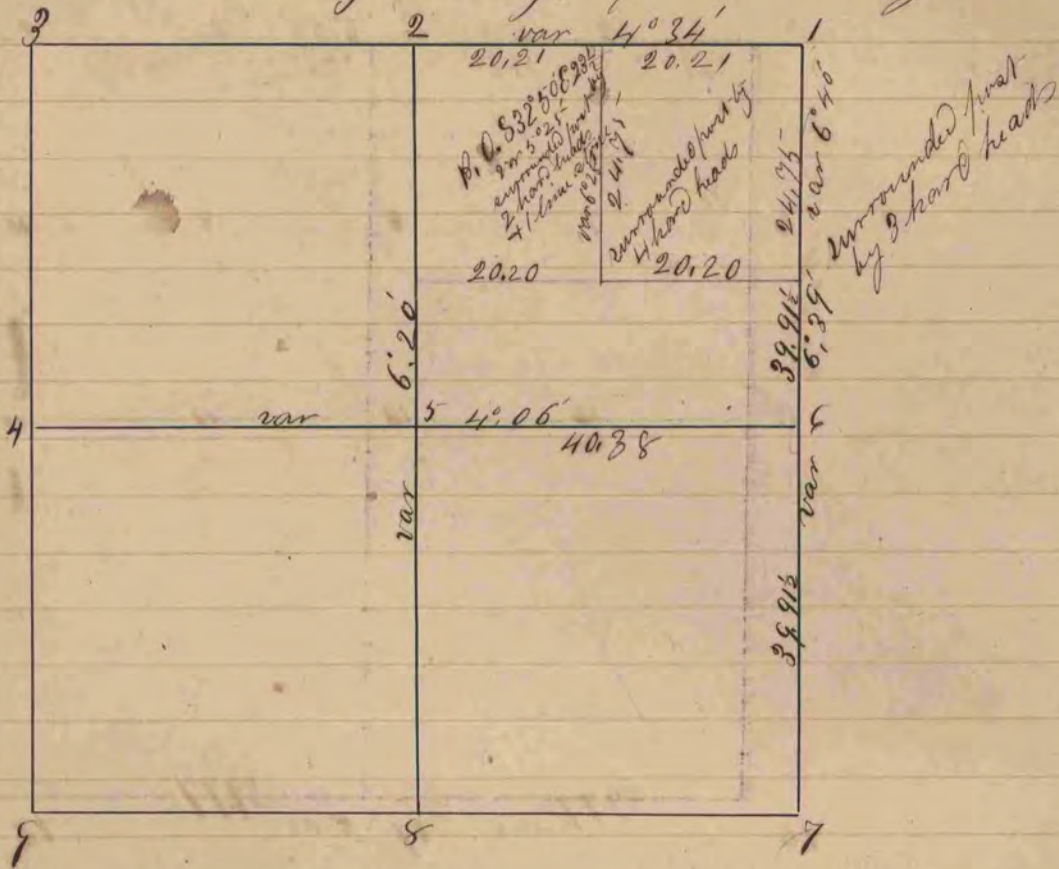


A Record and plat of a Survey made on Sec 22 in Town
4 North of Range 14 East of 4th Principal Meridian
distances given in chains Surveyed June 22^d 1859 by Edward Ringer
variations marked on the Lines County Surveyor of Rock County Wis's
Line



Surrounded post by } At Sig 2 Look witness trees White Oak 20 S 41° 40' W 71
3 hard heads } variation 6° 20' Burr Oak 16 S 73° 25' E 117
S.P. by 3 hard heads } Sig 4 Burr Oak 18 S 0° 20' E 86 var 6° 20'
Run the East and west mile through the Sec on a var 4° 06'
by forward and back sights
Sig 5 Black Oak 78 S 8° 30' E 58 2° 40' E 51 Black Oak 5 N 30° W 10 1/2
Surrounded post by 3 hard heads var 6° 20'
Sig 6 surrounded post by 3 hard heads
" 7 " " " " " "
" 8 " " " " " "
All traces of East 1/4 post being gone put it in
from Sec. Corners