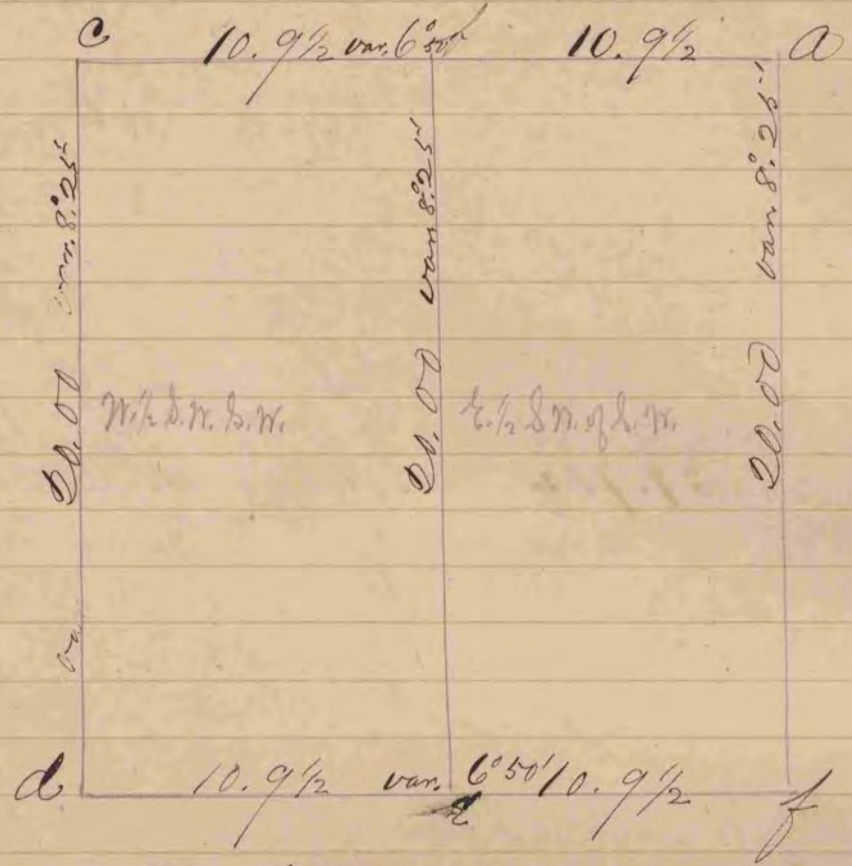


Record of Plat of a Survey made
by Sylvanus D. Locke,
County Surveyor,
February 25, 1863 on Sec. 3, T. 3. R. 14. E.



- "a" Set stake with 3 stones near surface surrounding stake
- "b" " " " " " " " "
- "c" " " " " " " " "
- "d" Burr Oak, 14 inches, S. 30° E. 45 links
- "e" found Original Post - South West Corner of Sec.
- "f" Set stake with 3 stones near surface
- "g" White Oak 14 inches - in Corner

Johannes

Surrounding stake