

Bm. O. 20 N. 8° W. 163  
" " 26 S 43° E. 325  
The stump of N.  
E. B. 7. had been  
dug up - it was  
N. 8° E 134. The  
bearing all agreed  
but the distances  
one not as given  
in the field  
notes.

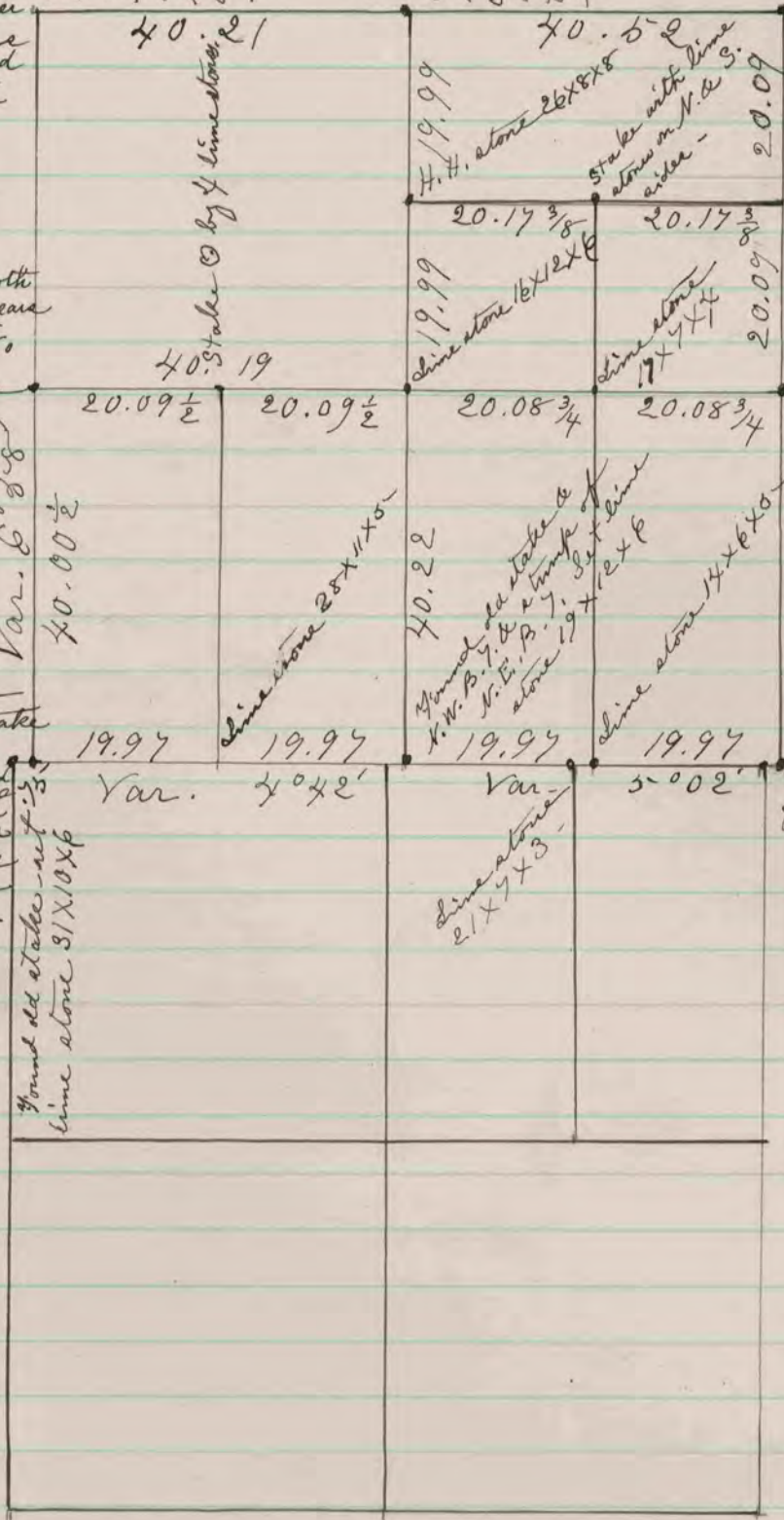
Found N.W.B.  
7. it is N. 82° W.  
219 did not put  
in permanent  
corners as parties  
adjacent did not  
take part in sur-  
vey -

Found H.H. stone at the  
corner also found the  
N.E. B. 7. put in  
flat H.H. stone, also put  
on top of it lime stone  
17 x 5 x 2

Did not put in per-  
manent corners as  
parties adjacent did  
not assist in the  
survey -

Found old stakes & both  
B. 7. the N.E. B. 7. bears  
N. 32° E. 218 & the  
N.W. B. 7. bears N. 66°  
W 130. set in place  
of old stake lime  
stone 22 x 7 x 4 &  
it by 4 h.b. stones.

Found the hole  
from which the stakes  
had been taken;  
the hole was filled  
with black earth  
clear to the bottom  
the subsoil was  
clay - set lime  
stone 32 x 12 x 7 -



Var. 6° 00 1/2  
40.00 1/2

40.00 1/2

Var. 4° 42'

Var. 5° 00 1/2'

Found old stakes - set  
lime stone 31 x 10 x 6

Found old stake &  
N.W. B. 7. & stump of  
N.E. B. 7. set lime  
stone 19 x 12 x 6

Corner as set by self in  
former survey -

Corner as set by self in  
former survey -

The above is a record & plat of a survey made  
on Sec. 32 Magnolia & Sec. 5 Spring Valley & is  
same as recorded on page 47 & 50 of Vol 2 -