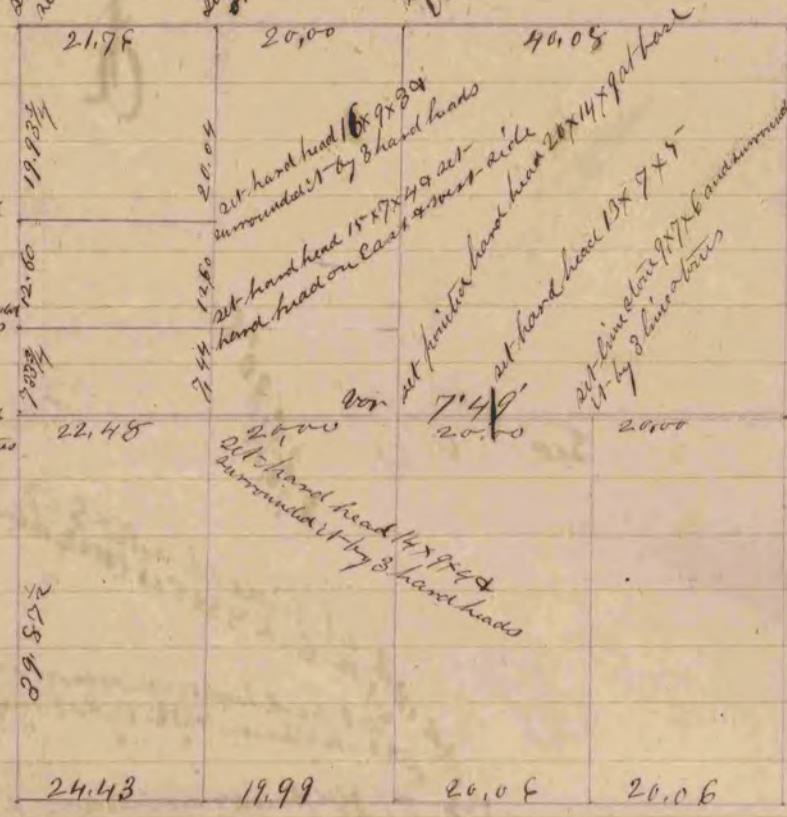


set line & line 15x6x5 +
 set hand head 11x7x5 + set hand head
 on the north and south sides
 set stake and surrounded
 it by 3 hand heads
 surrounded post by 4 hand heads



For corners on south side look at Sec 19 T4 R10 page 158

A Record and plat of a Survey made on Dec 18 74 R11
 June 4th 1861 by Edward Angler County Surveyor for
 Union Rock County Wis

COUNTY SURVEYOR
 RECORD 1 1851-1869