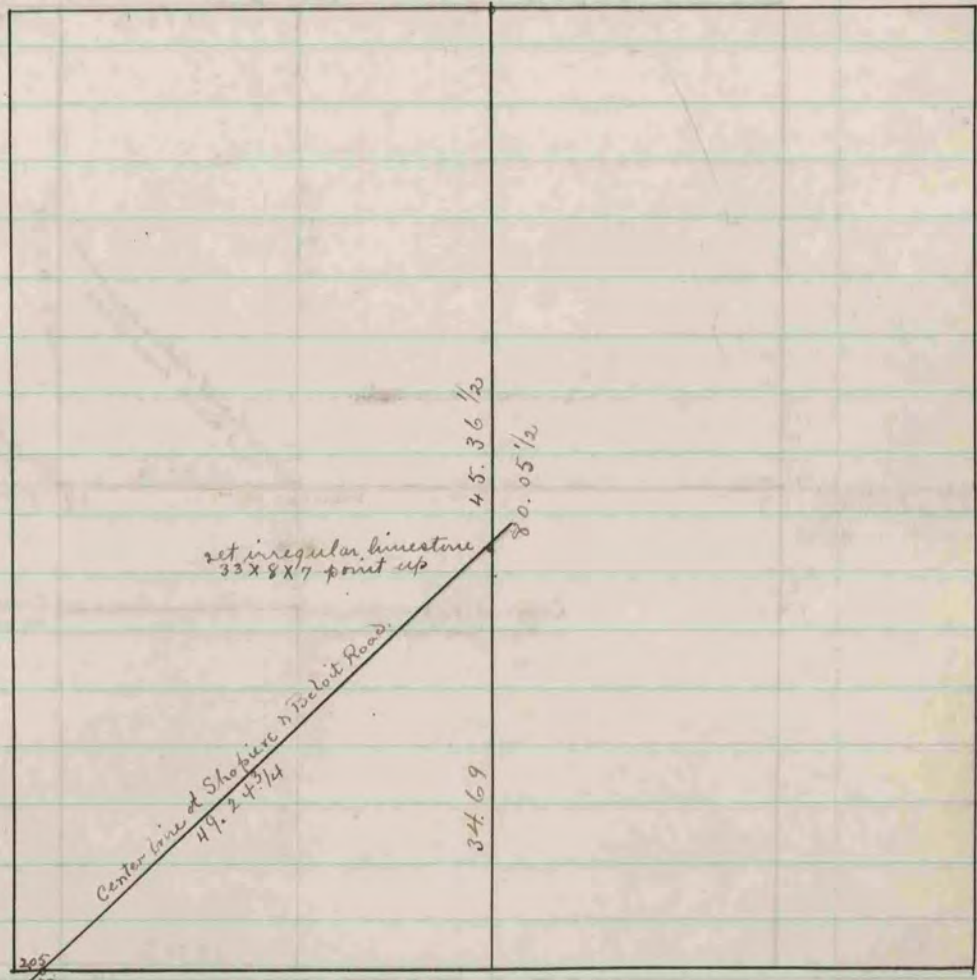


H9 - 107

Found N.E. B.T. where stump
of S.E. B.T. had been dug up. Also
had found post hole. Set lime-
stone 27 x 8 x 4 x surrounded by
4 limestone.



set limestone irregular
pointed 30 x 8 x 8 point up

set irregular limestone
33 x 8 x 7 point up

Center line of Skohiere & Trollet Road.
49.24 1/4

45.36 1/2

80.05 1/2

34.69

(See Bk I. Page 114.
County Surveyors Records)

The above is a record & plat of a survey made
by me on Sec. 19 Turtle, Oct. 8, 1887.

Edward Poyer
County Surveyor

RECORDS AND PLATS
COUNTY SURVEYOR