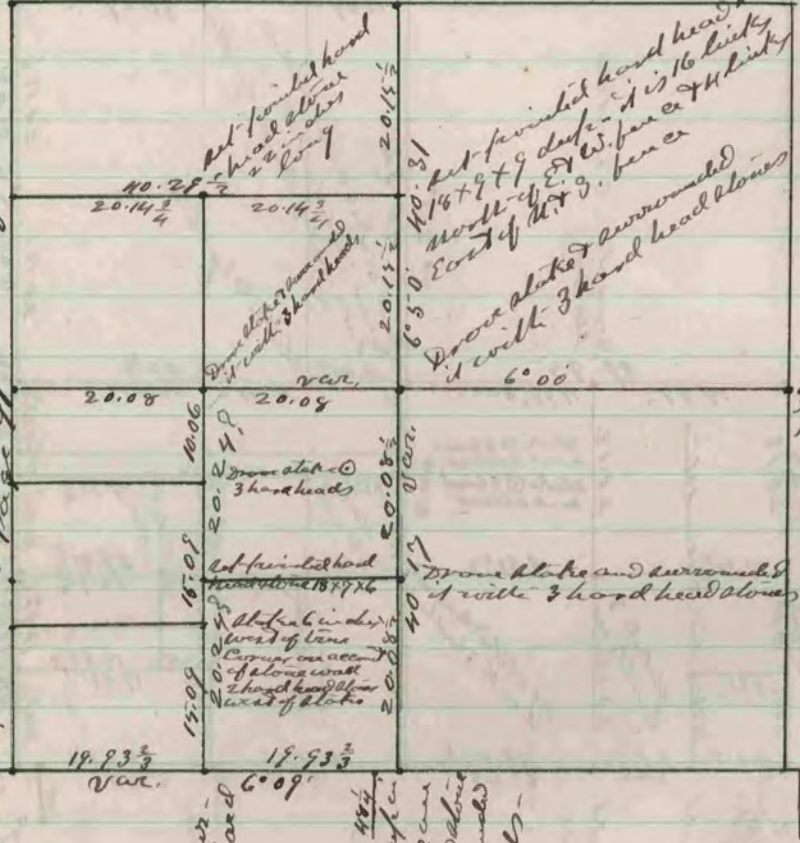


Plat No. 902 Capt. H. C. 33 Magnolia

Found Concer Established by
see -



Found slate and
rounded with 3 hand
heads.

Found old slate deep
groundly line stone
top of it. Red -
20 x 7 x 6 of rounded
with 4 hand heads -

The above is a record and plot of a
 highway made by me on sec. 34
 Magnolia - May 15 - 1874
 Edward Ruess
 County Surveyor

COUNTY SURVEYOR
RECORD 2 1869-1900