

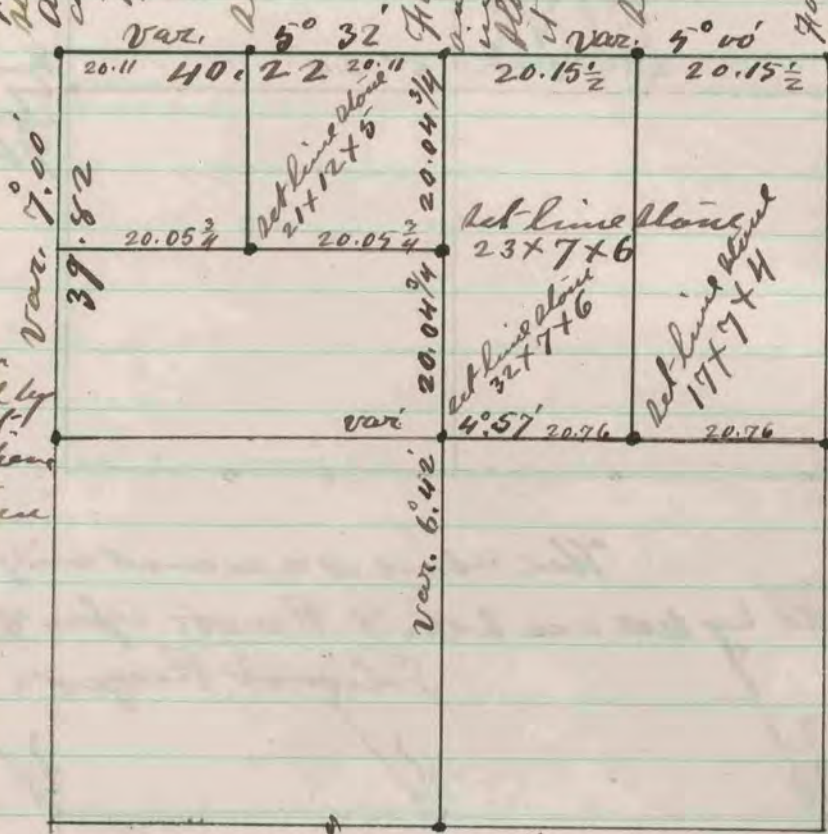
Found where witness tree
stumps had been dug up -
Also found slate and stone
at the corner as set by
Tooke - Deal new platte
in the file of the case
set by Tooke -

Set line stone 23x8x6

Found both witness trees - also slate
and stones set by Tooke - set
in the place of Man a line
stone 26x9x6 and surrounded
it by 3 hand made stones

Set line stone 29x6x
3

Found remains of old slate.
Set line stone 30x11x7
Have a Plan O. 18 S. 77 W. 78
that has the appearance of being
a witness taken by W. S. Sawyer
but there are no marks of it



Found corner
as established by
Tooke correct.
Also found where
the witness tree
stumps had been
dug up -

Found slate and
stones at corner
as set by Tooke.
Also found
where witness
tree stumps had
been dug up -

Found slate and stone
at corner as set by
Tooke - Also found
where witness tree
stumps had been dug
up - corner of the
intersection of these

The above is a record and plat of a survey made by me
in section eight Springvally, April 30 and May 1 - 1879 -
Tooke and Church had subdivided this section
under the State Law, fixing the center equi
distant from from the opposite corner
proving quarter corners - I established the
center at the point of intersection of right lines
between the corresponding quarter corners -
Edward Reger, County Surveyor