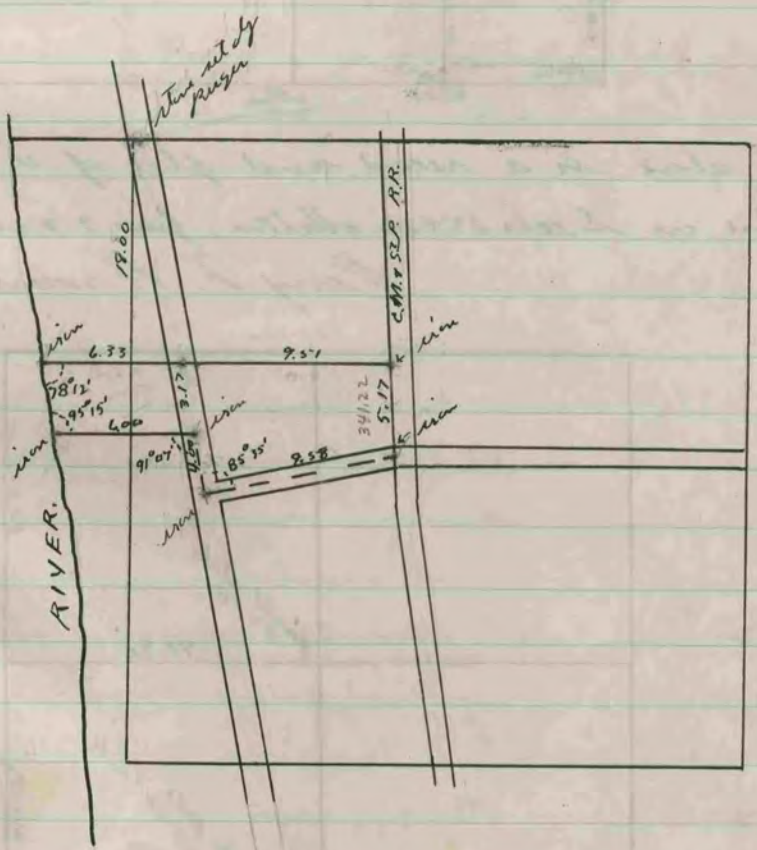


The above is a record and a plat of a survey made  
 by me on the N.E.  $\frac{1}{4}$  Sect. 8 Fulton on April 29, 1899  
 Perry F. Brown  
 County Surveyor



The above is a record and a plat of a survey made  
 by me on the S.E.  $\frac{1}{4}$  Sect 24, Jamesville  
 Perry F. Brown  
 County Surveyor

COUNTY SURVEYOR  
 RECORD 2 1869-1900