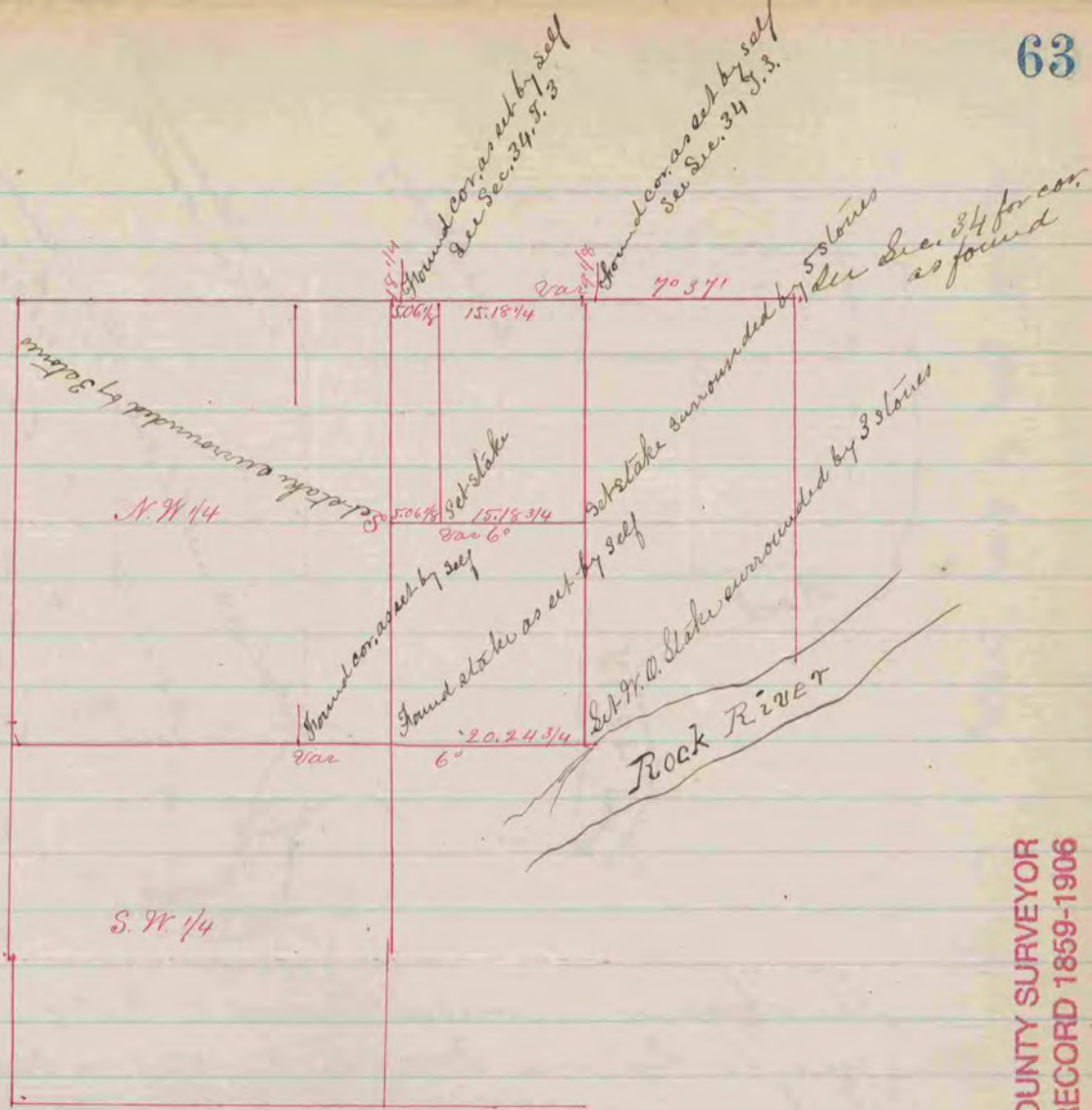


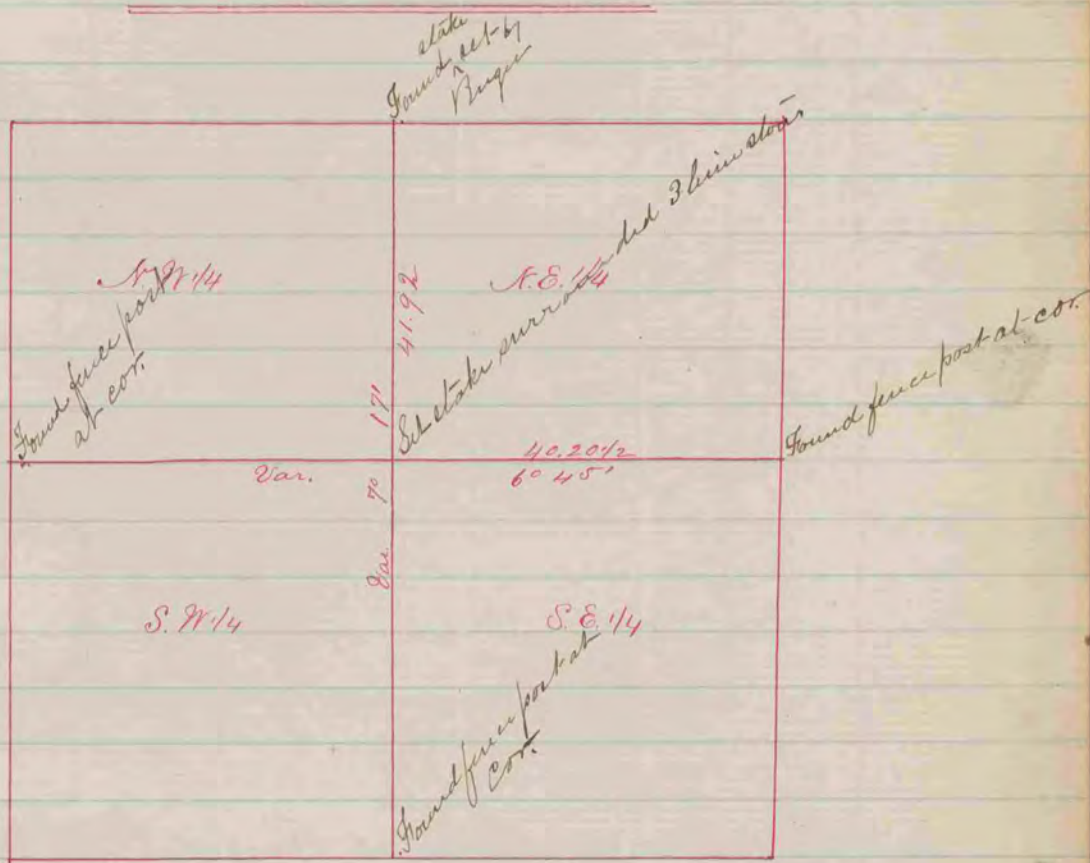
REC VOL I PG 323



COUNTY SURVEYOR
RECORD 1859-1906

The above is a correct Record & Plat of a survey made by me June 6, 1868 on Sec. 3, Rock S. H. Locke Co. Surveyor

REC VOL I PG 333



The above is a correct Record & Plat of a survey made by me July 20, 1868 on Sec. 5 T. 2 R. 12 Rock R. K. Lee Dep. Co. Surveyor