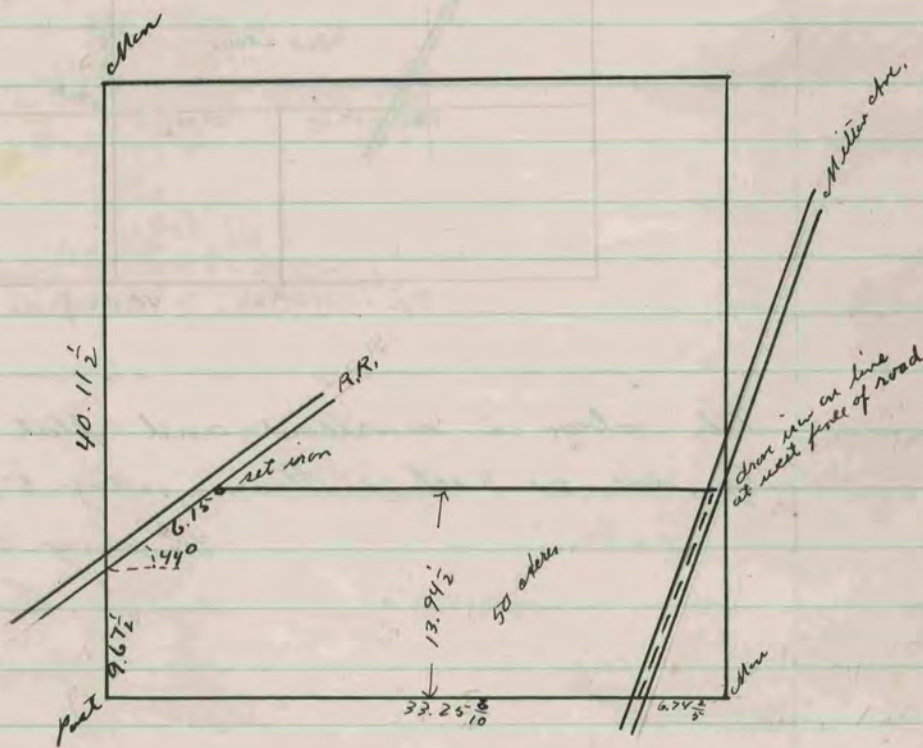


The above is a record and plat of a survey made by me on School lot on S.E.  $\frac{1}{4}$  Sect. 1, Fulton Sept. 6, 1899.

Perry F. Brown  
County Surveyor.



The above is a record and plat of a survey made by me on the S.E.  $\frac{1}{4}$  Section 18 Harmony, Feb. 6, 1900

Perry F. Brown  
County Surveyor.