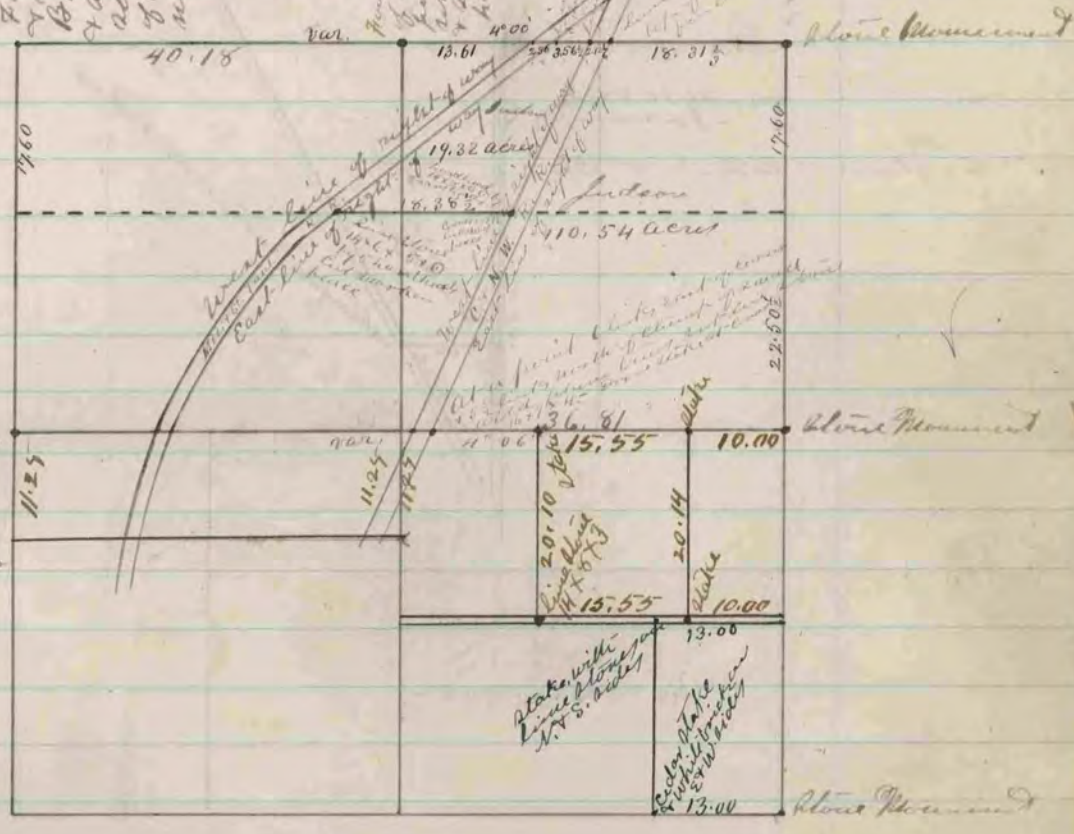


Get the N.W. corner of all slabs of N.W. found in B. D. H. about of N.E. B. J. Red Line above 15 x 8 x 8 ft. A corner is set with 4 lines almost the corner is 4 ft from N.W. corner of 8 1/2 ft. north of 8 1/2 ft. fence

Found old stake N.E. B. D. H. about of N.W. corner of all slabs in the ground about top of it is 15 x 8 x 8 ft. & is surrounded by a fence - 2 lines of 4 ft. hard head stone



hard head stone 16x11x7 with small stones on N.S. & W. corner is in line with E.W. fence & fence set near East from west road fence

COUNTY SURVEYOR  
RECORD 2 1869-1900

The right of way on C & N. W. Ry is 80 ft. wide west of 40 ft. from East of center line. In establishing the right of way boundary lines I assumed that the center of track is the center line. There is nothing on record to show that the N.E. & St. Paul Ry. are possessed of right of way therefore we assumed that the fences are on the boundary lines of right of way.

The above is a record and plat of a survey made by me on section 24 of Jamesville Nov. 25 & 27 - 1874  
 & July 21 - 1877  
 Edward Ruyter  
 County Surveyor

The distance from the South 1/4 corner of section 24 Jamesville to the surface of the water East side of Rock river is 38.70 chs. showing an encroachment of 0.79 chs. inside of the meander line at that point. The meander post on the North line of section 24 Jamesville is on the edge of bluff, found line stone at corner set by self. also found both P. D. stumps - distance from sec. 1 cor. to meander cor. 11.60 chs.

same date as above