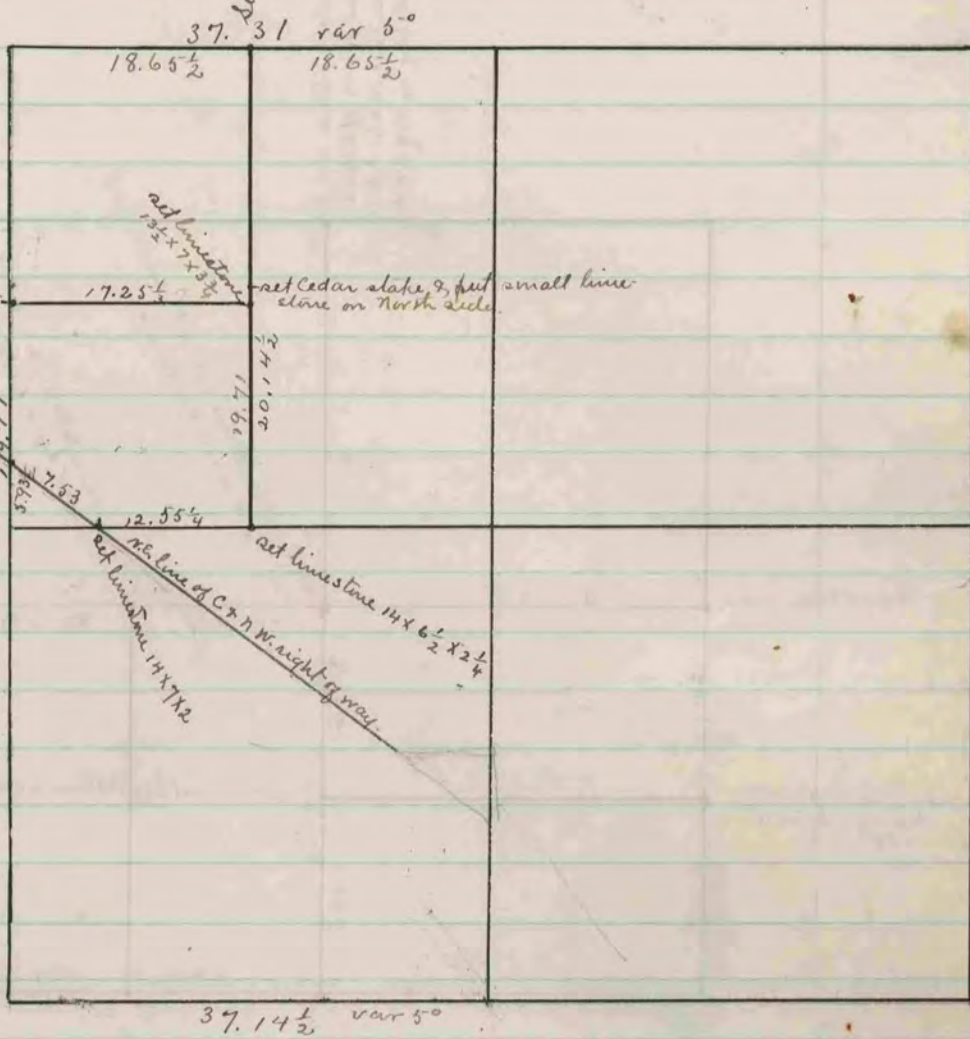


24-183

set limestone 11x8x3 1/2



set limestone 12x5x5

set limestone 13x4x2 1/2

set limestone 13 1/2 x 7 x 3 1/2

set Cedar stake 9 feet small line close on North side.

set limestone 14x7x2

set limestone 14x6 1/2 x 2 1/4

- See page 18 -

The above is a record & plat of a survey made by me on Section 7 La Prairie. Sept. 2. 1884.

Edward Ruger
County Surveyor

COUNTY SURVEYOR
RECORD 2 1869-1900