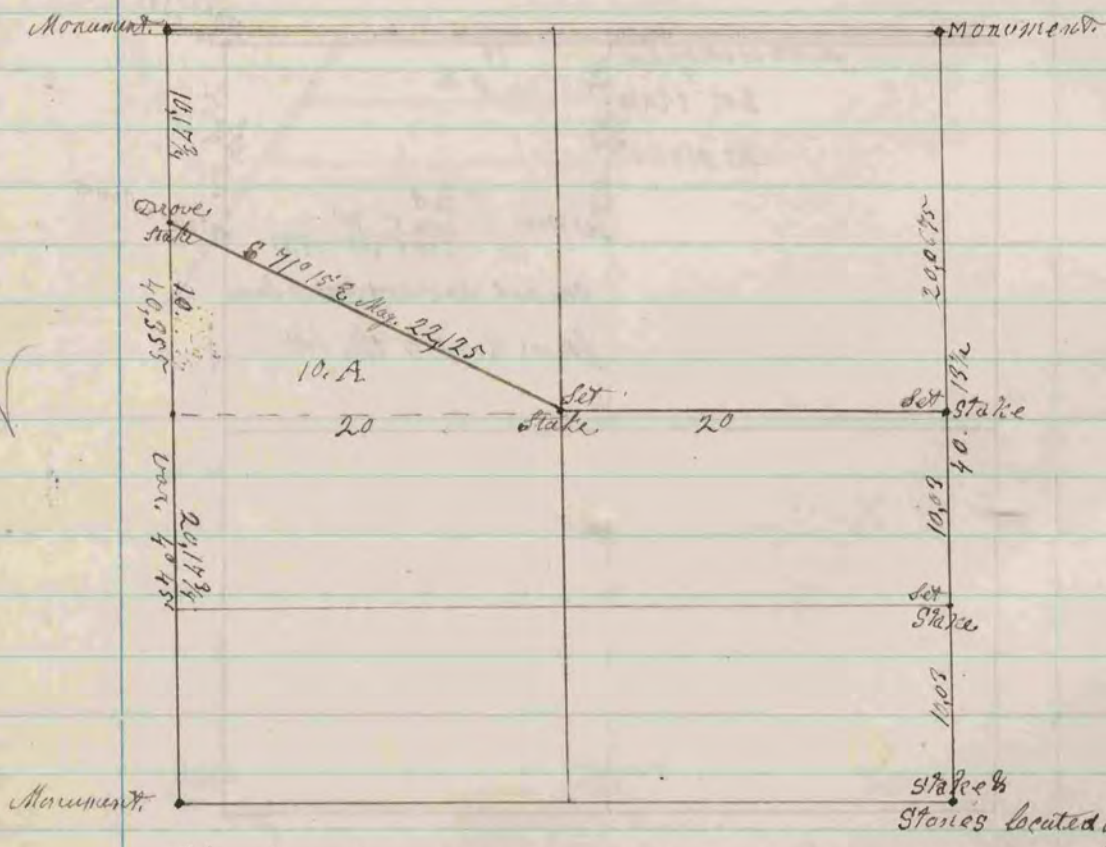


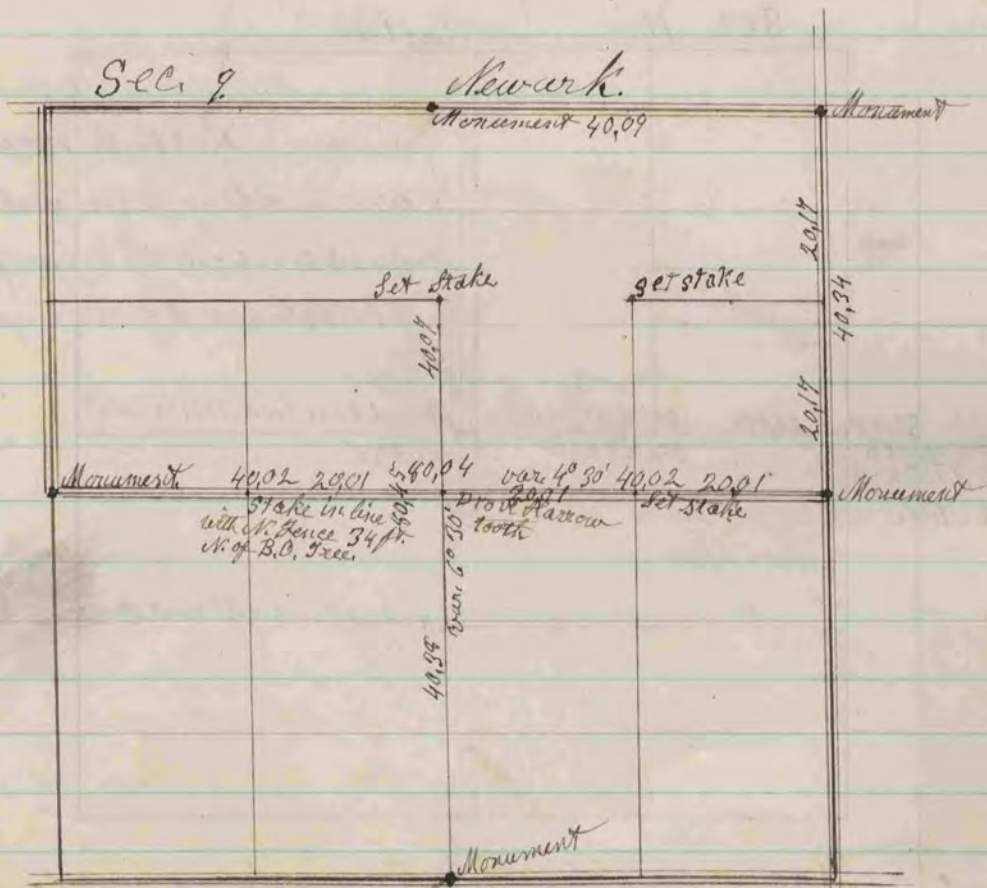
N.W. 1/4 Sec. 11 Newark



COUNTY SURVEYOR
RECORD 2 1869-1900

The above is a record and plat of a survey made by me
on Section 11 in Newark Jan. 5th 1882.

J. A. Holmes Co. Surveyor



The above is a record and plat of a survey made by me
on Section nine in Newark Jan. 6th 1882.

J. A. Holmes Co. Surveyor