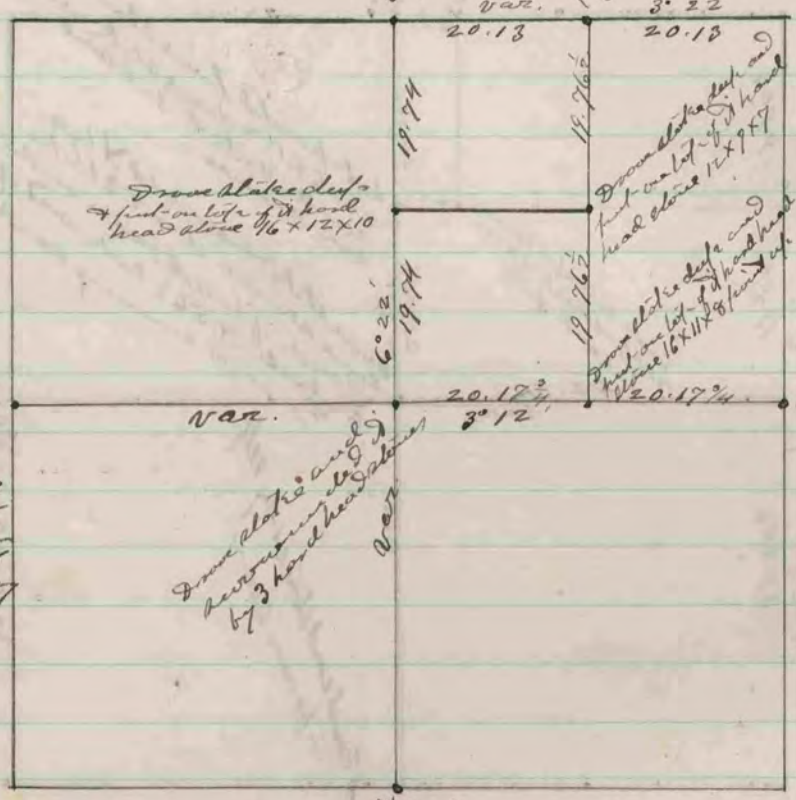


Found corner established by
two plates surrounded by
3 line stones

Plate surrounded by 5 line stones
corner established by two plates



Found blump of P. J.
found stone dead, and
found one lot of 1/2 hand
head stone 12.7 x 2.2 x 1
1/2 found up. head
corner is in line
of one or measuring
east on south
side of lane. In
the west slope of
dug and foot high

Found plate and
surrounding by
3 hand head stones

Dressed plate dead
found one lot of 1/2 hand
head stone 12.7 x 1.7

Dressed plate dead
found one lot of 1/2 hand
head stone 16.2 x 1.1 x 8 found up

Found corner established
by two plates
surrounded by 4
line stones, in the
highway culvert

The Above is record and plat of a
highway beside
by me on section 13 Spring Valley -
April 10 - 1874
Edward Purger
County Surveyor

RECORDS & PLATS
COUNTY SURVEYOR