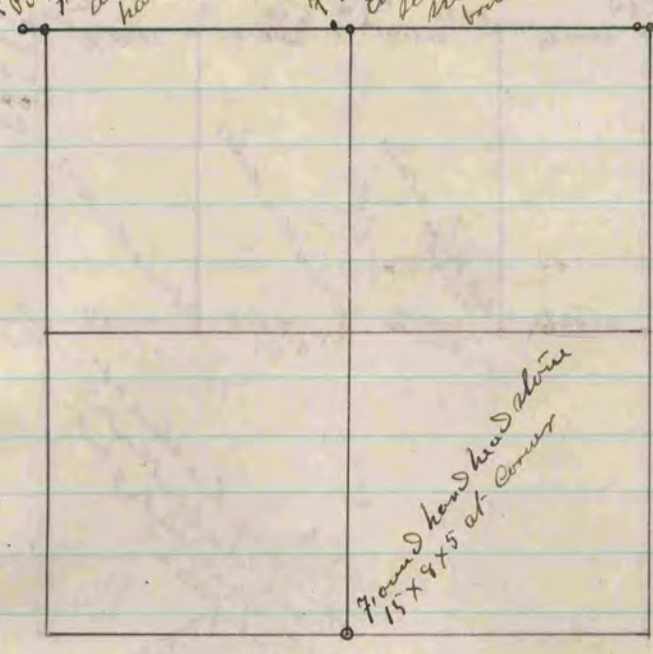


Found stone at corner
Also found bearing tree
and a piece of another
bearing tree -

Found old note
bearing of corner of - set
hard head stone 14x9x7

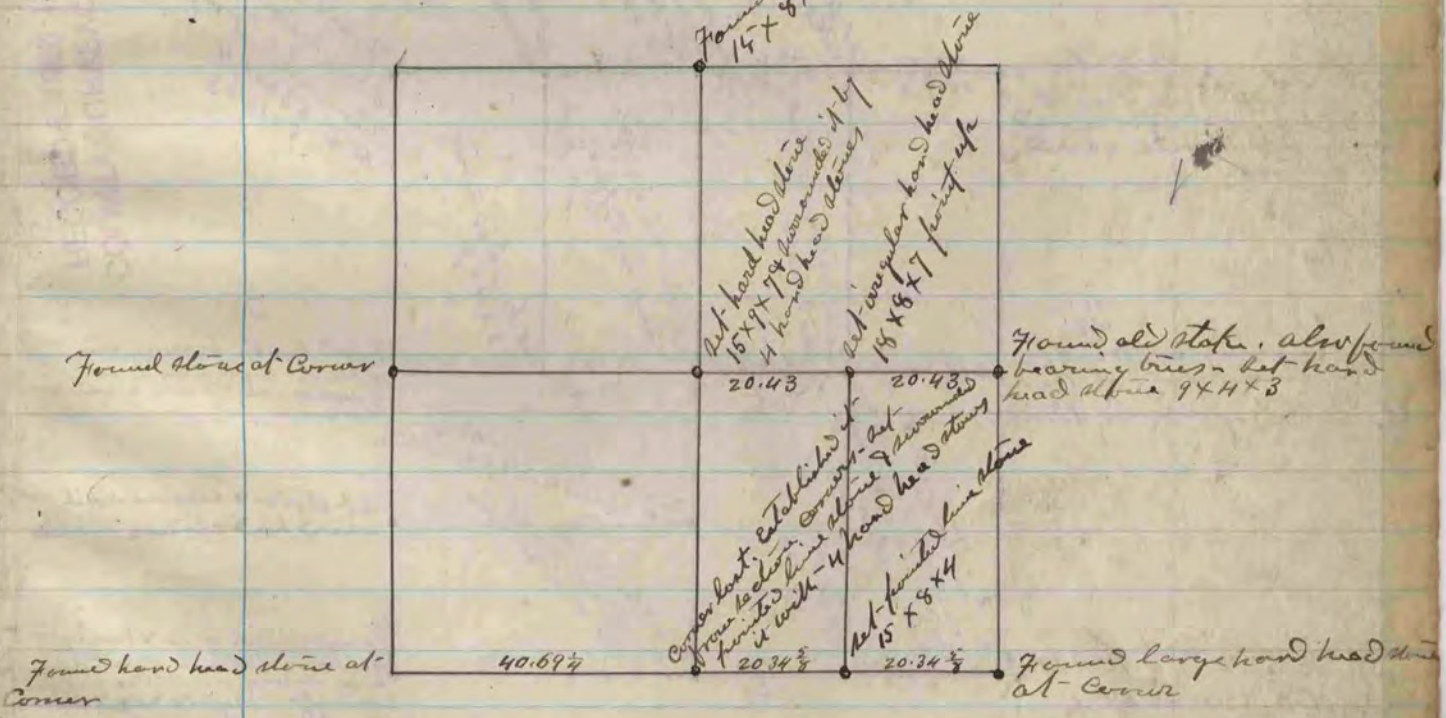
Found hand stone
bearing of corner - set
Established quarter corner from
bearing of white brick on north
side 11x5x3 & put piece of white
brick on north and south sides

Found remains of old stakes
also found one bearing tree and
set line stake 12x7x3 & put
of white brick on north & south sides



The above is a plat and record of a survey made by
me, April 12th 1970, on Section 5 Porter
Edward Ruyger
Deft. County Surveyor

Found hand head stone
15x8x5 at corner



The above is a plat and record of a survey made by
me, April 13 - 1970 on Section 8 Porter
Edward Ruyger
Deft. County Surveyor

COUNTY SURVEYOR
RECORD 2 1869-1900