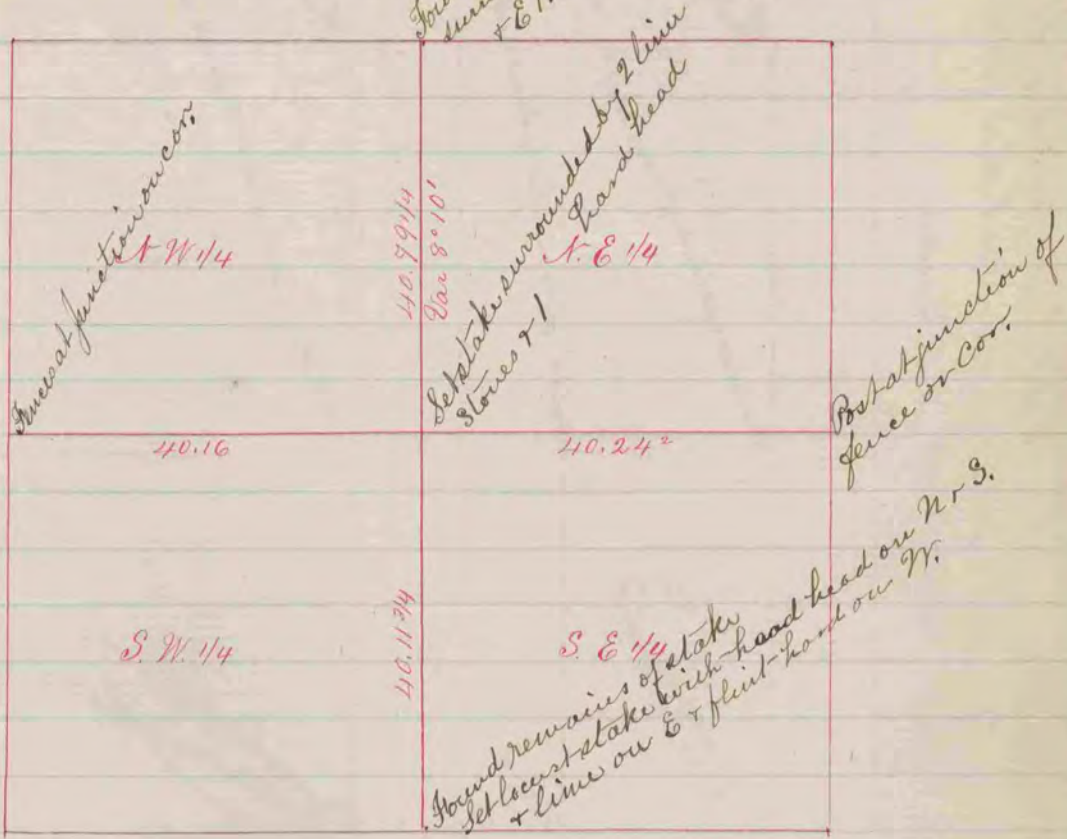
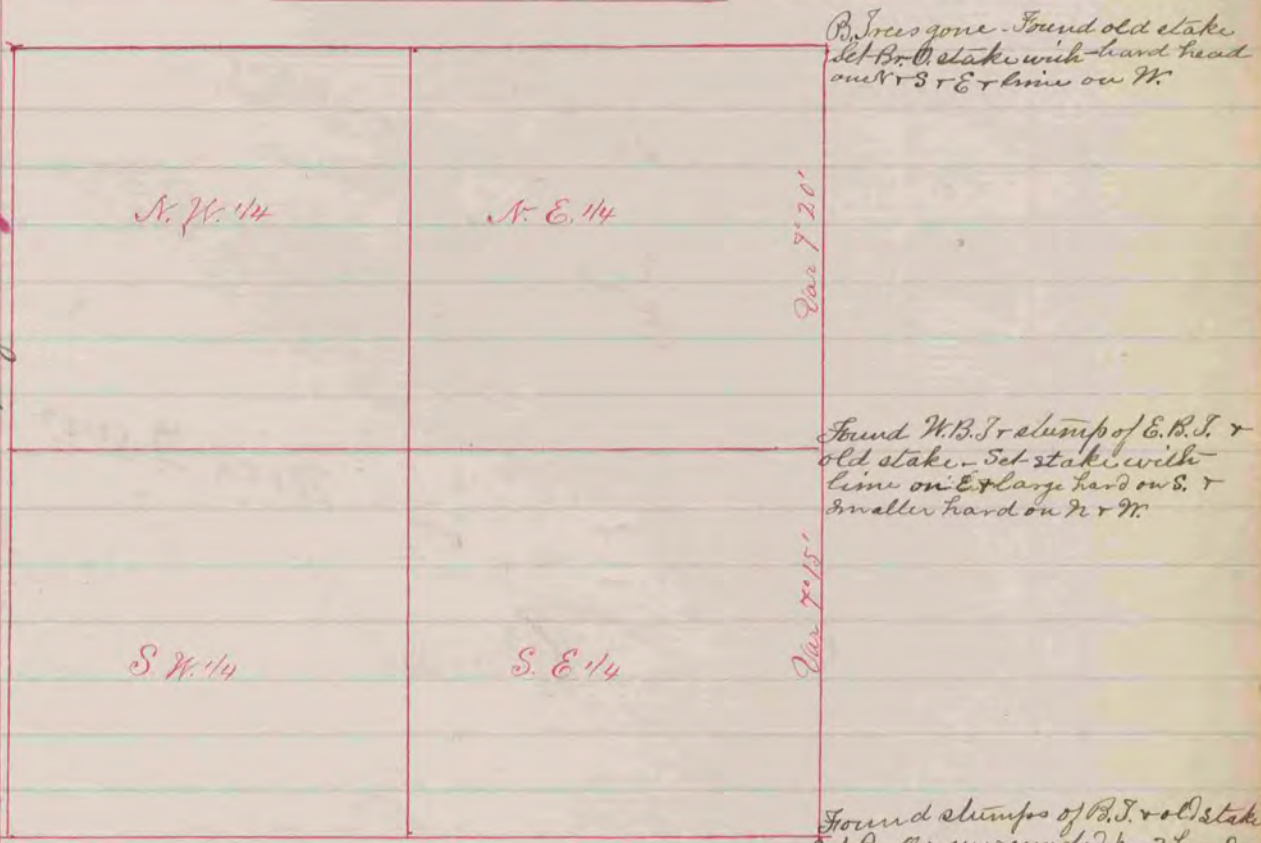


(Recorded in Vol I page 265)



The above is a correct Record & Plat of a survey made by me July 9, 1866 on Sec. 6, Rock S.H. Locke Co. Surveyor

(Recorded in Vol I page 266)



The above is a correct Record & Plat of a survey made by me July 9, 1866, on Sec. 7 Town of Rock S.H. Locke Co. Surveyor