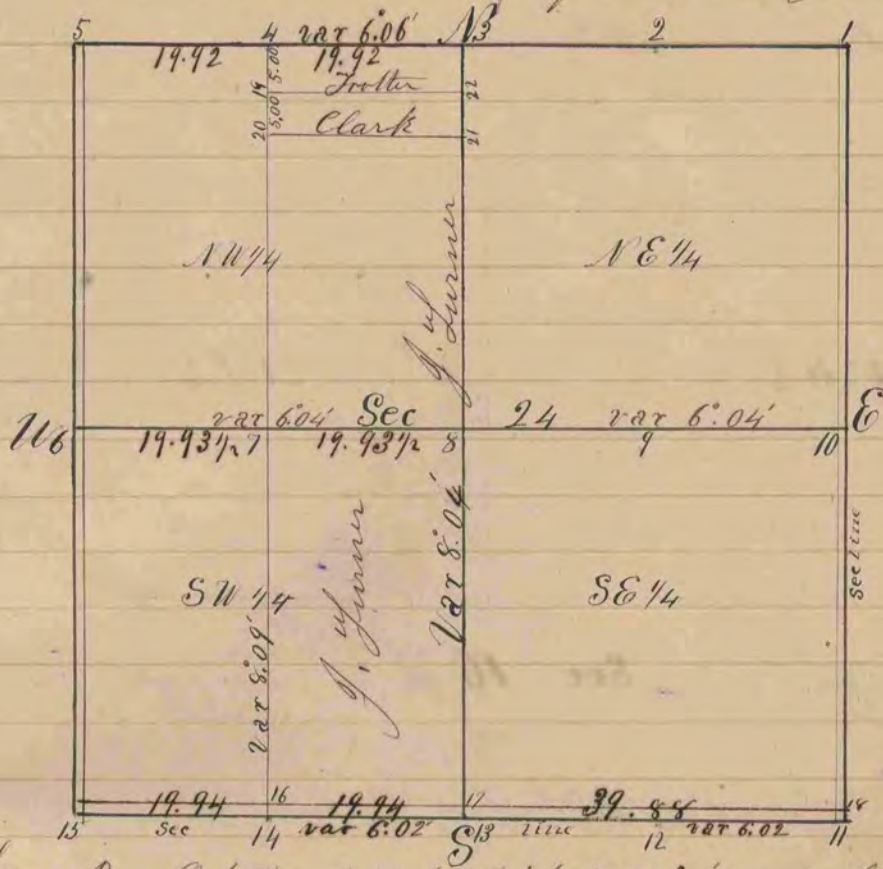


A Record and plat of a survey made on section
Twenty four (24) Town Three (3) North Range Thirteen
East of the Fourth Principal Meridian for John Sumner
Surveyed January 22nd + 24th 1859 by Edward Rugey County Surveyor
Harmony of Rock County Wisconsin



- Fig 4 Burr Oak stump 7 1/2 feet high 14 S 81.15 E 55 1/2 links
 - " " White Oak stump 3 feet high 6 S 22.30 E 30 links
 - " 7 White Oak 26 N 24.15 E 43
 - " " White Oak 24 N 27.30 W 43
 - " 8 White Oak 30 S 80 E 12
 - " " White Oak 30 S 55.30 W 32 1/2
 - " 15 Locust 6 N 32.10 W 102
 - " " Locust 7 N 54.30 W 96
 - " 16 Locust 7 N 26 W 19
 - " " Locust 7 N 54 W 28 1/2
 - " 17 Locust 7 S 64.30 W 6 1/2
 - " " Locust 2 S 82.15 E 11 1/2
 - " 18 South west corner of Black smith shop N 64.35 E 18 3/4
 - " " Guide Board post N 83.35 W 37 1/2
 - " 19 Burr Oak 12 S 39.10 E 37
 - " 20 Burr Oak 13 S 20.35 E 19
 - " 21 White Oak 30 S 85 E 56
 - " 22 Burr Oak 12 S 73.30 E 25 1/2
- W old witness trees gone took new ones } white Oak 30 S 29.05 W 1.28
E took new witness tree Burr Oak N 68.50 W — var 6.04