

A Record and plat of a survey made on  
Section one (1) in Township N<sup>o</sup> two (2) North  
Range N<sup>o</sup> # Twelve (12) East of the fourth  
principal Meridian for William Atkinson

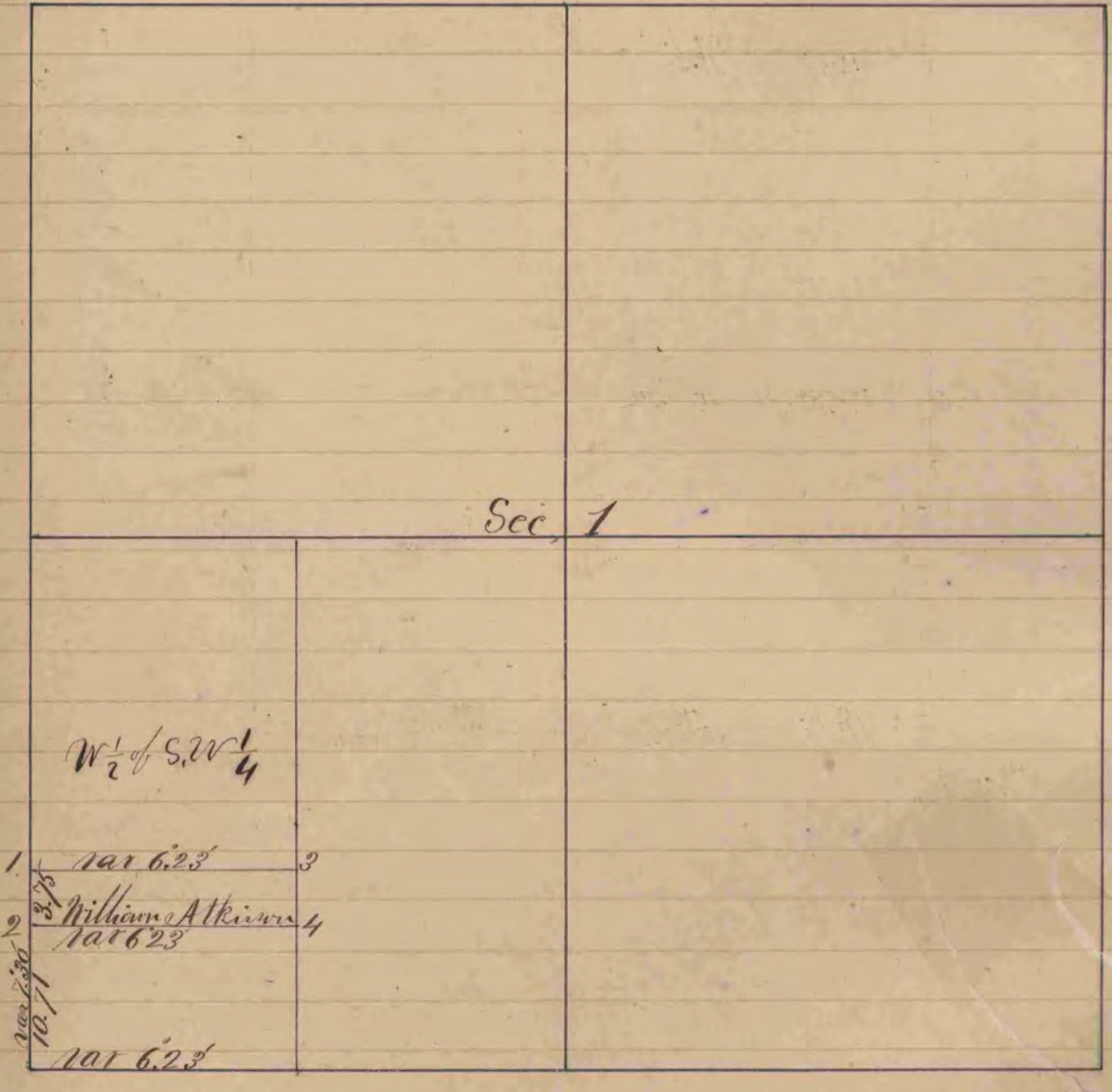


Fig 1 Run Oak 6 S 14. 28' W 99 1/2 links  
 " " " " 2 S 75. 32' W 51 links  
 " 2 Black Oak 1888 50 links  
 " " " " 158' 30" E 59 1/2 links  
 101 on Bearing trees 7.30

Rock

The above survey was made

January 15th 1859

by Edward Ruger County Surveyor  
of Rock County Wisconsin