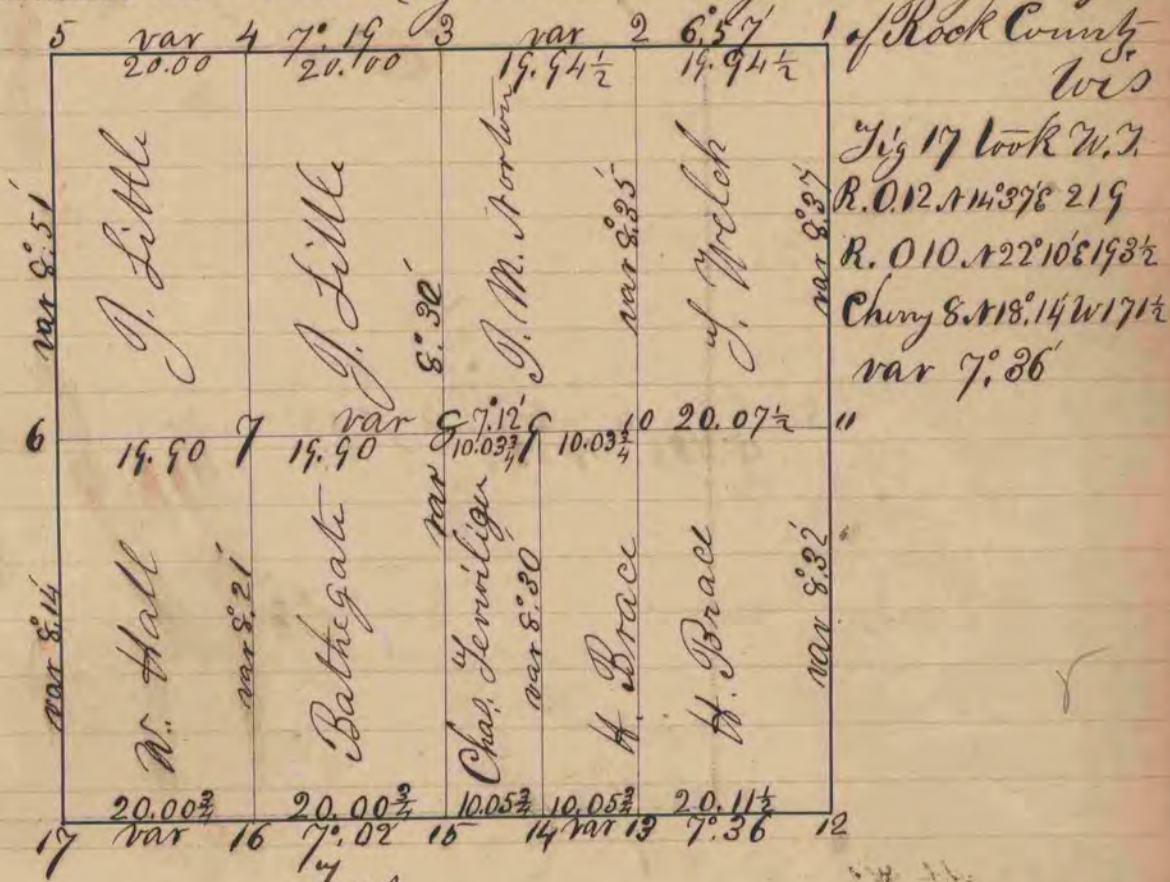


A Record and Plat of a Survey made on
Sec 21 Town 3 Range 13 for Brace, Ferriliger, Hall,
Bathegate, Little, Welch & Norton

Distances given in chains } Surveyed March 21st & 22nd 1859
variations marked on lines } by Edward Ruger County Surveyor



- At Fig 1 old witness standing Black Oak 12 S 31° 20' 15' W, Oak 12 N 90° 20' 104
- " " 2 took W. J. White Oak 30 N 65° 25' E 218 var 8° 32'
- " " 3 old W. J. standing Burr Oak 10 S 5° E 17 Burr Oak - S 40 W 37
- " " 4 took no bearings
- " " 5 Old witness Trees agreed as to distances but required a variation of 12° 40' to close on bearing
- " " 6 Old witness Trees standing Red Oak 10 S 43° E 56 Burr Oak 6 N 10° 20' W
- " " Old W. J. being in highway took new ones
- " " Burr 7 N 79° 52' W 133 3/4 Burr Oak 5 N 84° 35' W 137 var 7° 30'
- " " 7 White Oak 14 S 38° E 17 3/4 var 7° 12' } var 8° 35'
- " " 8 White Oak 14 S 25° 27' E 62 1/2 W. O. 11 S 63° 38' - 78 1/4 W. O. 12 S 66° 35' W 115
- " " 9 White Oak 22 S 7° 37' W 55 1/2 White Oak 11 S 44° 30' E 80 1/4 var 7° 12'
- " " 10 Black Oak 13 N 58° 25' E 13
- " " 11 one Old W. J. standing White Oak 24 S 43° E 2 other W. J. cut-down
- " " 12 Old W. J. Cut-down put in spot from stumps and took
- " " W. J. R. O. 7 S 62° W 117 R. O. 7 N 62° 12' W 130 R. O. 12 N 21° 56' E 202 var 7° 45'
- " " 13 Locust 5 N 1° 15' W 54 3/4 var 7° 36'
- " " 14 Locust 6 N 14° 25' E 57 1/2 Locust 6 N 45° 55' E 80 1/4 var 7° 36'
- " " 15 Old W. J. Red Oak 18 N 11° 17' took new W. J. Pl. Oak 8 S 24° 15' W 15 1/4
- " " 16 Black Oak 6 S 0° 43' E 68 1/4 var 7° 36'