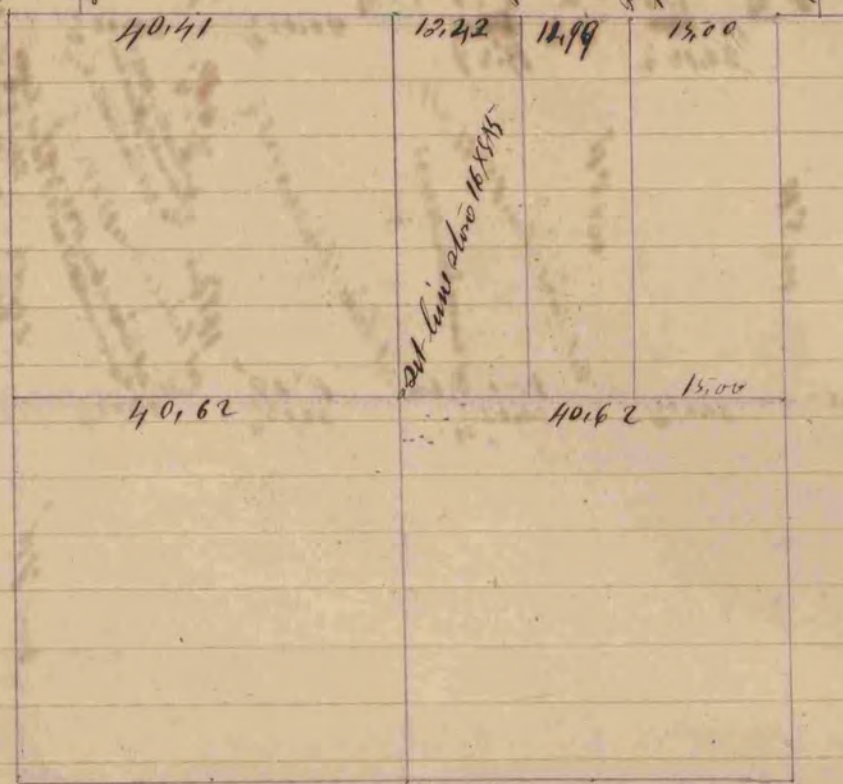


set line about 24 x 11 x 4  
 210 set line about 20 x 14 x 3  
 set line about 14 x 8 x 5  
 set line about 12 x 10 x 3  
 4 small lines about 4 set line  
 shadow N & S side



A record and plat of a survey made on Sec 37/1R13  
 March 9<sup>th</sup> 1861 by Edward Kruger  
 County Surveyor  
 for Beck County Wis  
 J. Miller

COUNTY SURVEYOR  
 RECORD 1 1851-1869