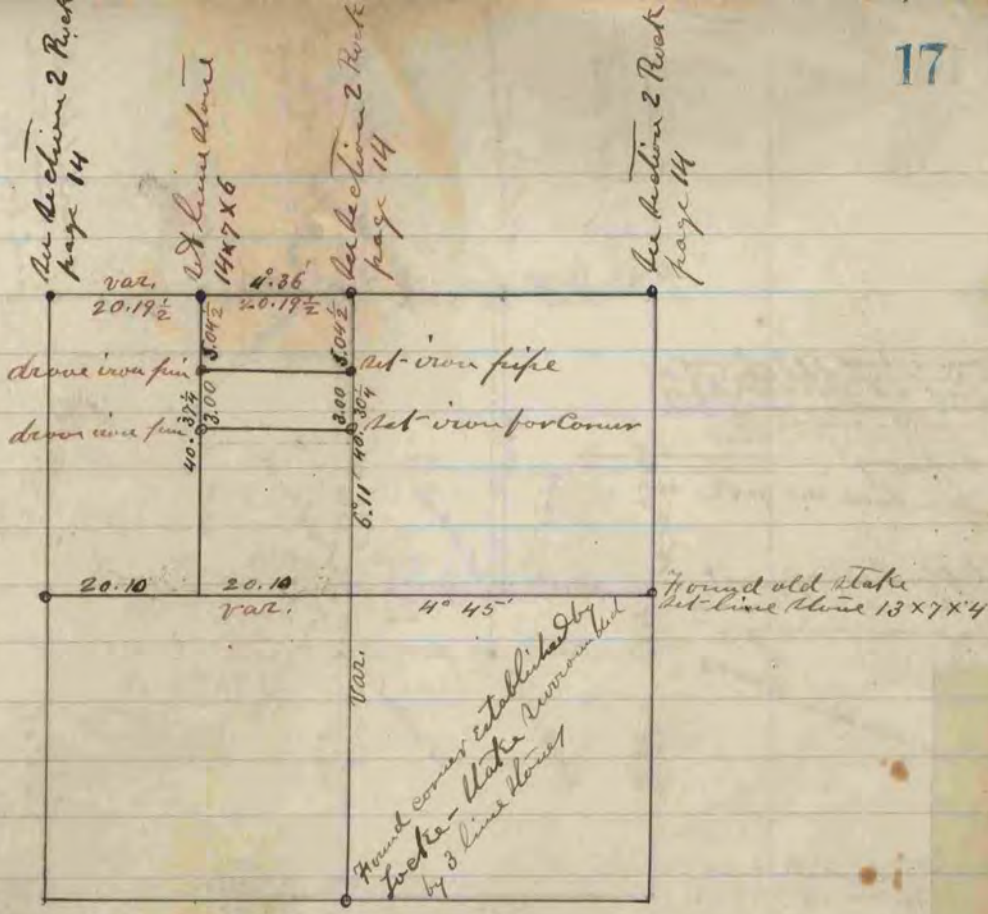
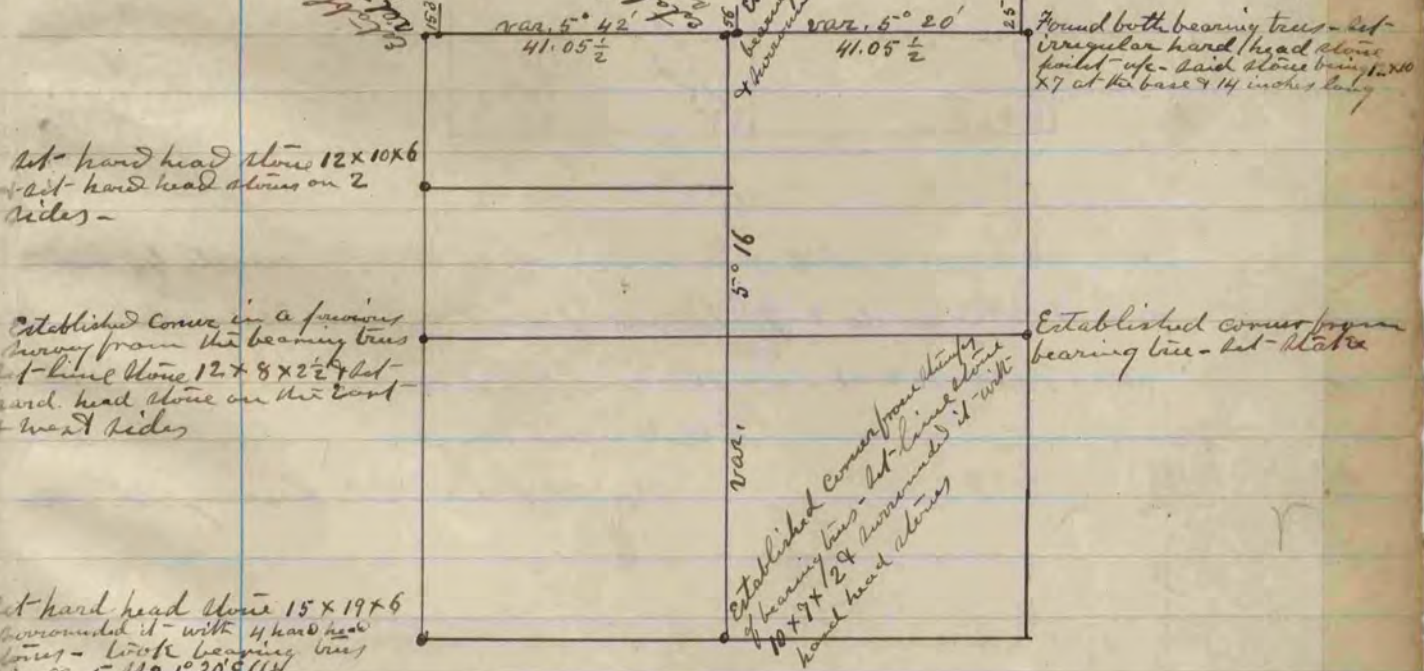


COUNTY SURVEYOR
RECORD 2 1869-1900



The above is a second and plat of a survey made by me
March 5 & 8, 1870 on Section 11 R. 2
Edward Ruge
Dept. County Surveyor

Established corner from bearing tree - set-line stone 13x7x4 & surrounded it with 4 hand head stones
Set-iron pipe - stake surrounded by 3 line stones
Found both bearing trees - set-iron hand head stone pointed up - said stone bearing 12x10x7 at the base & 14 inches high



The above is a plat and record of a survey made
by me on Section 3 T. 2 - March 9 & 10, 1870
Edward Ruge
Dept. County Surveyor