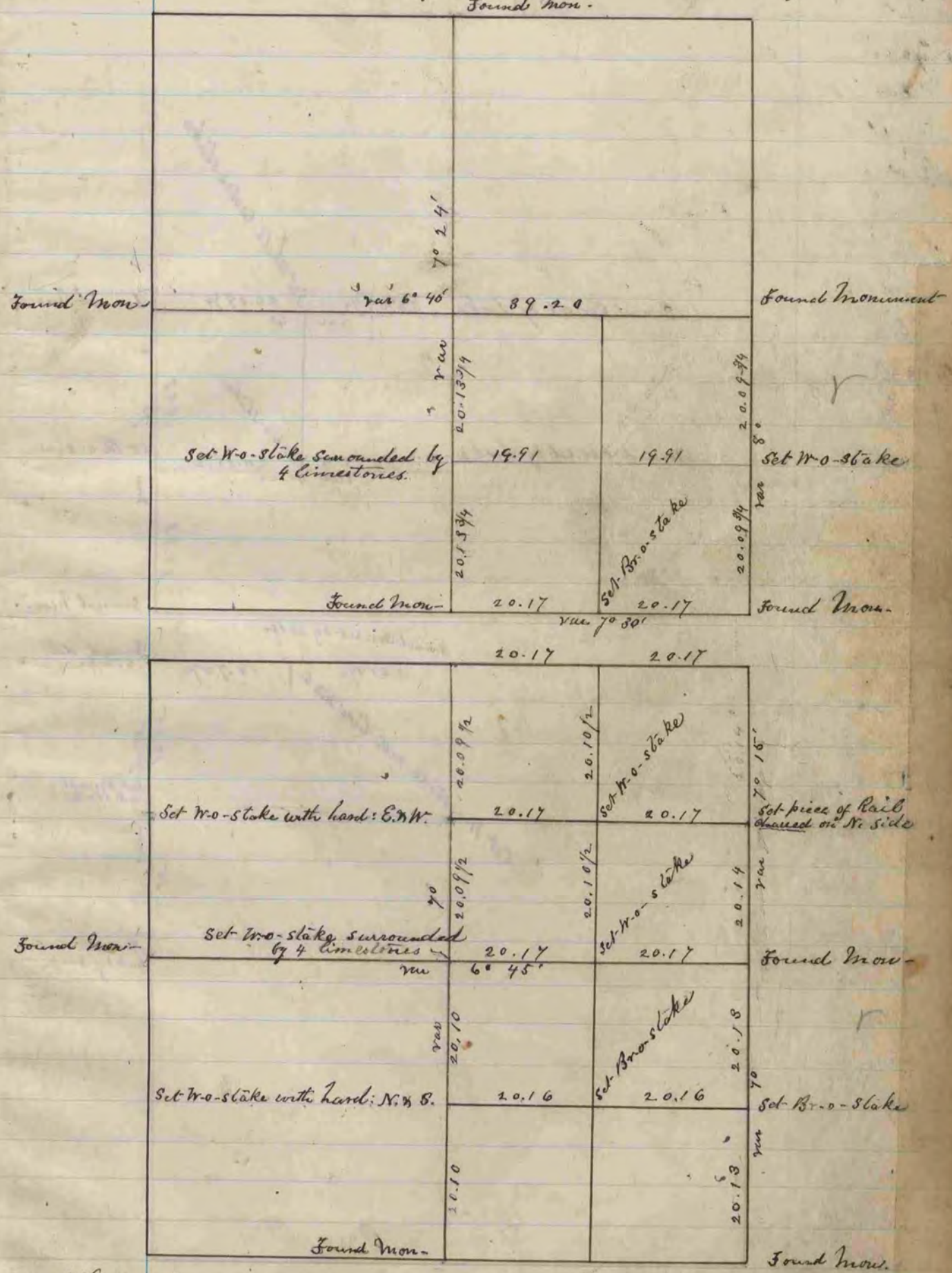


Below is a correct Record and Plat of a Survey made by me Oct 27<sup>th</sup> 28<sup>th</sup> & 29<sup>th</sup> 1869 on Sec. 11 T. 2 R. 11 (Plymouth) R. H. Lee, Dep. Co. Surr-  
Found Mon.



The above is a correct Record & Plat of a Survey made by me Oct 29<sup>th</sup> 1869 on Sec 14 S. 2 R 11. Plymouth. R. H. Lee Dep. Co. Surveyor