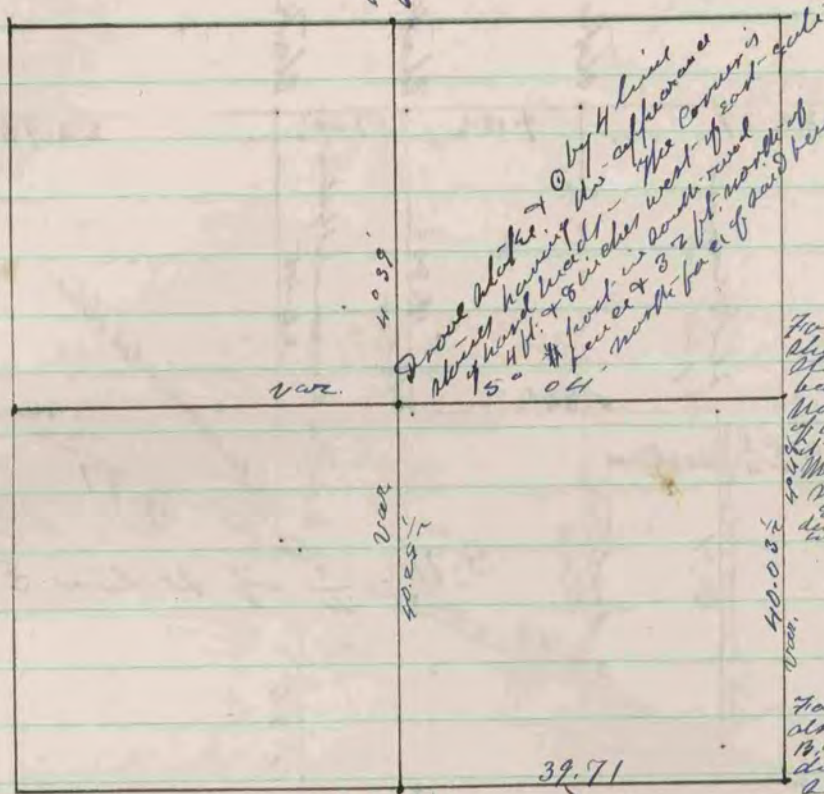


See south 1/2 corner of  
Acclaim 13 page 166



Drove stake 70 by 4 line  
 stake having the appearance  
 of hard wood - The corner is  
 5 ft. x 8 inches west of east side  
 # found in south-west  
 corner 32 ft. north  
 north face of said line

Found old stone hole  
 about 1/2 N.W. 1/4 where  
 found of S.W. 1/4 had  
 been dug up. Found  
 new stone in place  
 of old one & surrounded  
 by hard head stones.  
 Mr. Sparks drove a  
 stake 5 ft x 8 inches  
 east of the corner to  
 determine height of  
 mound and help pay

Found hole at corner  
 also found stump of N.W.  
 1/4. Stump of S.W. 1/4  
 dug up in field  
 found about 24 x 11 x 4  
 feet - up 70 ft with  
 5 hard head stones.

Found remains of old stone  
 also found remains of stump  
 of both N.W. 1/4, S.W. 1/4. Set new stake  
 in place of old one 70 ft  
 with 5 hard head stones  
 stones, look bearing  
 N. 10. 185 72 W 42 3/4  
 This tree has been chopped  
 into

The above is a record and plot of  
 a survey made by me on section 13  
 June 15 - 1876  
 Edward P. Ryan  
 County Surveyor

COUNTY SURVEYOR  
 RECORD 2 1869-1900