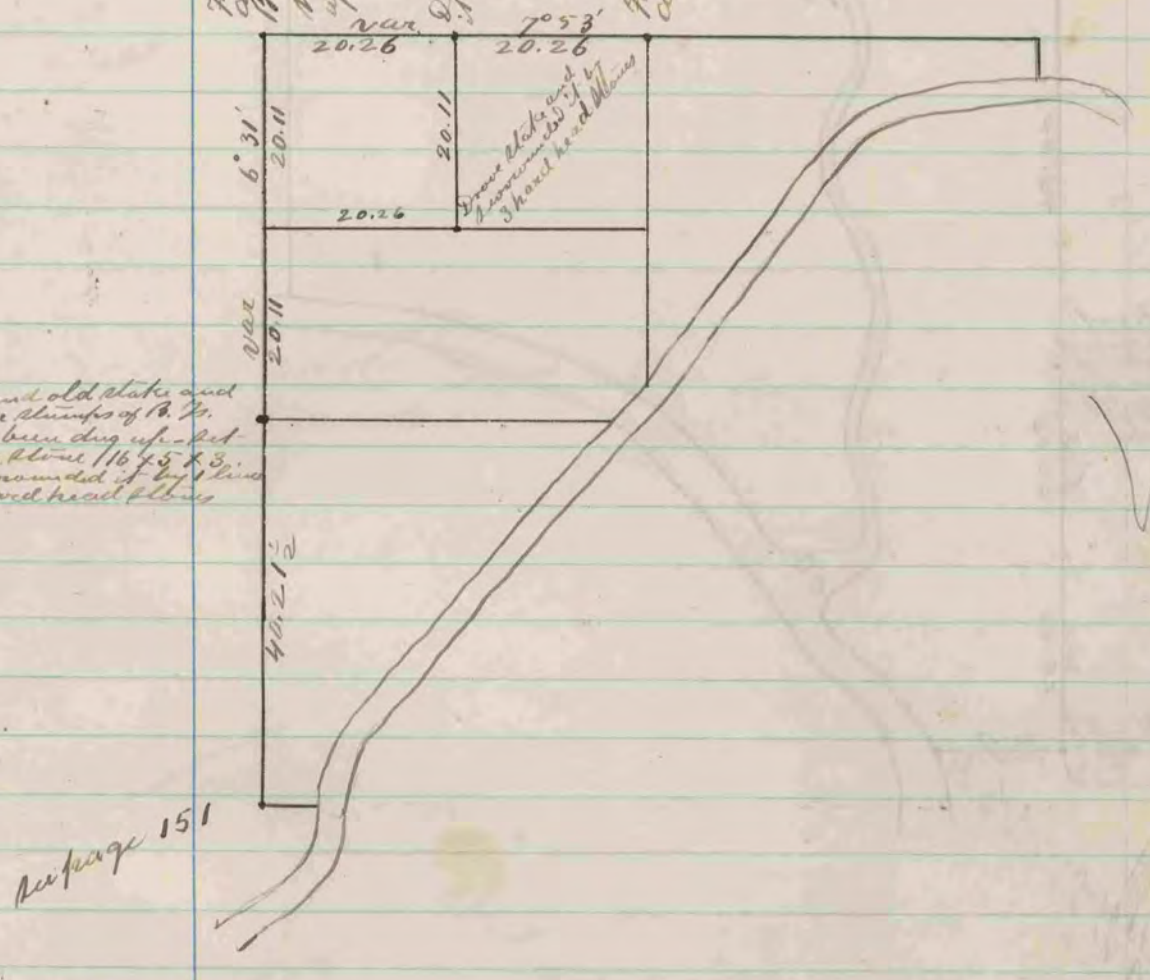


Found line stone at corner
 also found the stump of S.W.
 B. J. and where stump of
 M. E. B. J. had been dug
 up
 Drove stake and surrounded
 it by 3 hard head stones
 Found stake at corner
 also found the B. J.

Found old stake and
 where stump of B. J.
 had been dug up - set
 line stone 16 x 5 x 3
 & surrounded it by 3 hard
 head stones



The above is a record and plot of
 a driveway made by me on Section
 16 Fullon August 12 & 13 - 1875
 Edward Ruger
 County Surveyor

COUNTY SURVEYOR
 RECORD 2 1869-1900