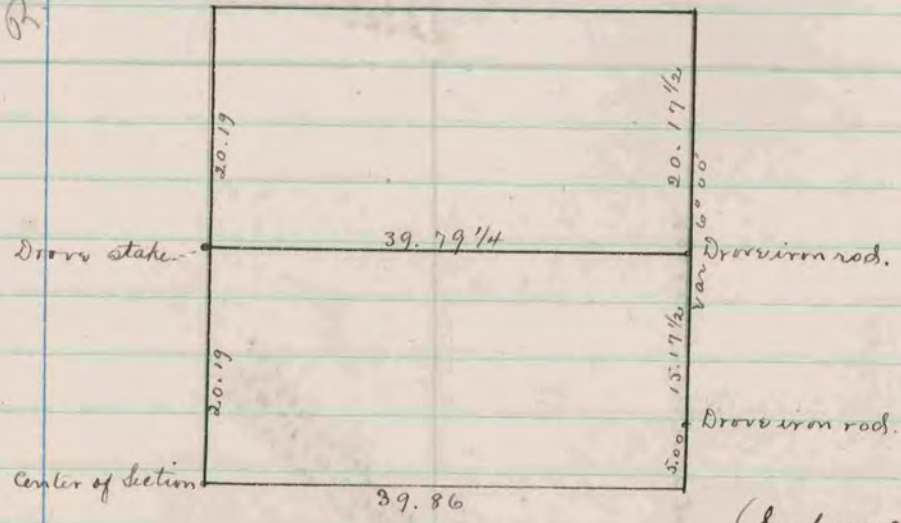


R. 6 5

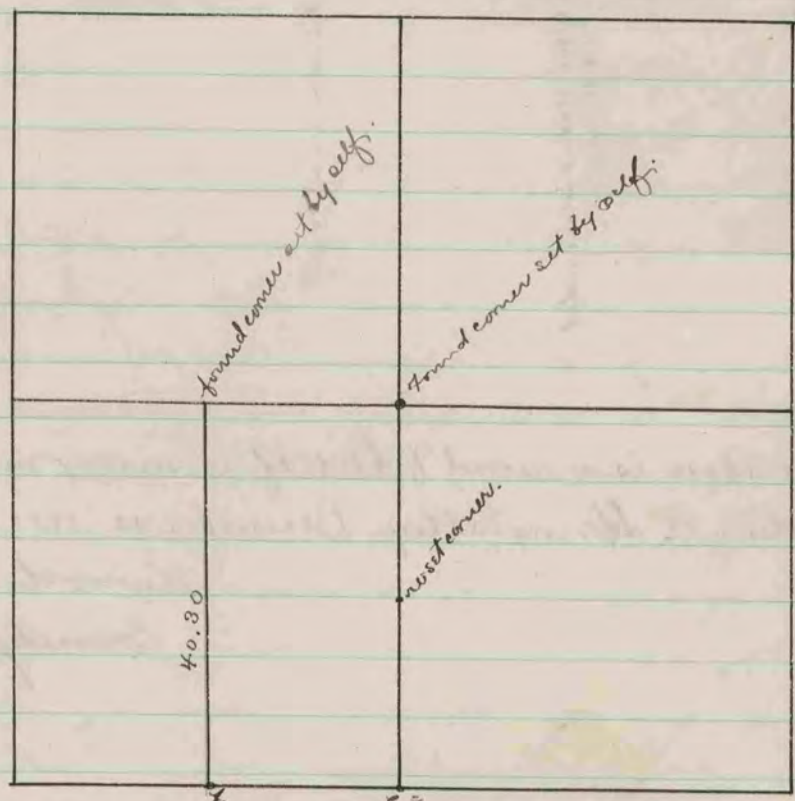


(See page 216. Vol. 1. County  
 Surveyor's Records.)

The above is a record & plat of a survey made by me on  
 N.E. 1/4 Section 27 Union, November 15<sup>th</sup> 1882.

Edward Rieger  
 County Surveyor

R. 5 7



found cor. set by self.  
 location surrounded by 14.  
 set on top lineations 1 x 8 x 5  
 7 x 5 sides

The above is a record & plat of a survey made by me on Sec. 27-  
 Janesville, Nov. 6. 1882.

Edward Rieger  
 County Surveyor