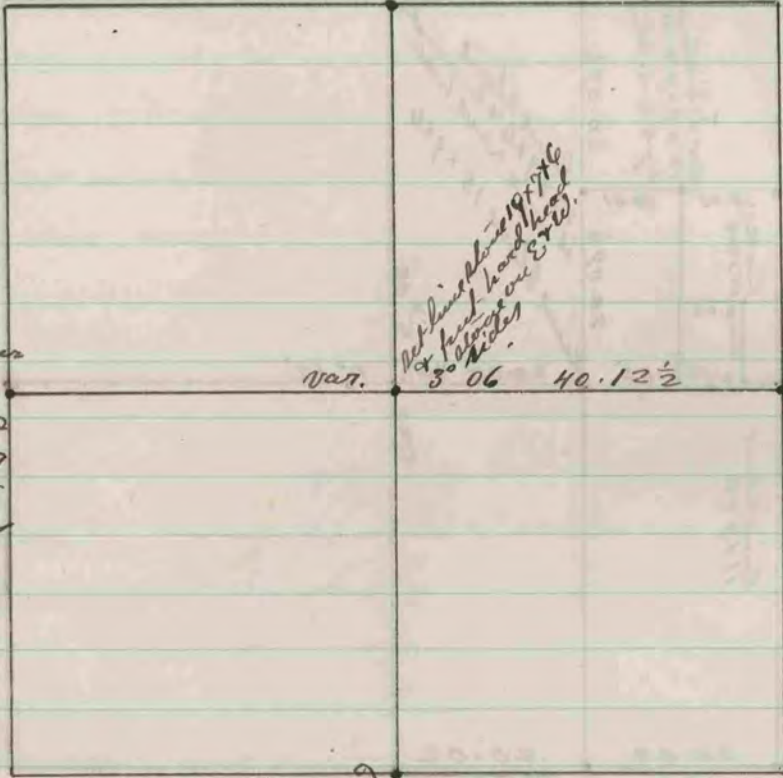


COUNTY SURVEYOR  
RECORD 2 1869-1900

Found Corner established  
by Kelly in a former survey



Found where corner  
stone had been re-  
moved to set fence  
front. Set hard  
head stone 18x9x9  
and surrounded it  
by 4 hard head stones

Found old stone.  
Set line stone 24x8x8  
and surrounded it by  
a lot of small stones

Found corner established  
by Kelly in the survey of  
McC. & Clinton.

The above is a record and plot of a survey made  
by me on Section 5 Clinton June 14-1878  
Edward Rieger  
County Surveyor